

PowerFlow™ D08 Modular Stack Valves



PRODUCT OVERVIEW

Modular Stack Valves



Features and Benefits

- Reduces assembly time
- Eliminates plumbing for reduced system space and connections
- 5,000 PSI rated at full rated flow
- Matches D03, D05, and D08 mounting patterns

Product Description

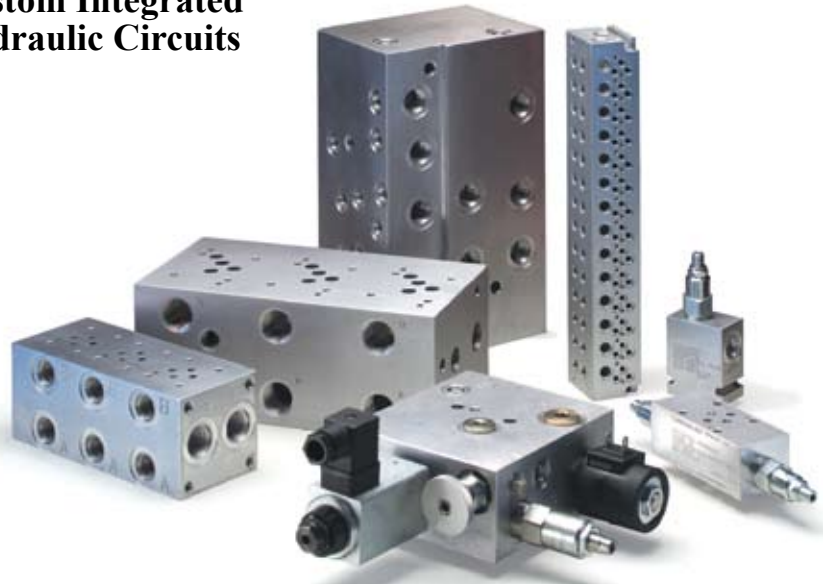
Modular stack valves are designed to install between the valve and its mounting surface. This will eliminate plumbing connections and reduce space requirements. Continental Hydraulics has a full range including check, flow control, relief, reducing, sequencing, shuttle valves and counterbalance valves. Manufactured to NFPA and ANSI/ISO's standards.

Bodies are manufactured of either aluminum (3000 PSI) or ductile (5000 PSI) to meet your pressure requirements. Our bodies use industry common cavities. All cartridges are 100% tested functionally.

Specifications

- Flow: Up to 120 GPM
- Pressure: Up to 5,000 PSI
- Temperature: Up to 200° F.
- Buna Seals

Subplates/Manifolds and Custom Integrated Hydraulic Circuits



Features & Benefits

- Precision machining to meet both NFPA and ANSI/ISO valve patterns
- High flow option
- Pressures up to 5000 PSI
- Available off the shelf for shipping
- Manifolds reduce piping thus reducing possible leakage points
- Parallel, series or custom circuits

Product Description

Continental Hydraulics supply Subplates, manifolds and Custom Block designs to meet your requirements. Our Subplates, Manifolds and custom products are available to match a variety of cartridge valve manufacturer's cavities

We also have a full line of adapter, transition, tapping and cover plates. Adapter plates mount to your existing equipment and allow newer; valve patterns to be mounted, saving plumbing time and expense.

Tapping plates allow installation of gauges without external plumbing. Our manifolds are manufactured for D02 through D10 NFPA patterns. Manifolds are available with one to sixteen stations.

Specifications

Manufactured from either aluminum or continuous cast ductile materials Pressure rated to 3000 PSI for aluminum and 5000 PSI for ductile. Ports available are NPTF, SAE, BSPP, ISO and BSPT

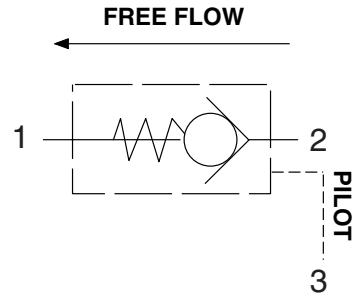
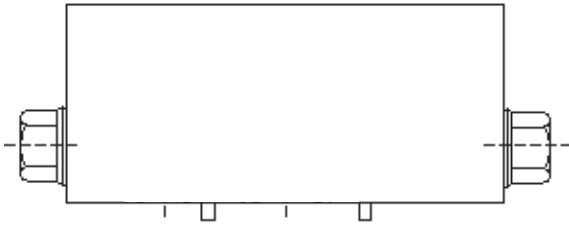
TABLE OF CONTENTS

MODULAR STACK VALVES: NFPA D08, CETOP 8 & NG25

	PAGE#
<u>Check Valves (Pilot-Operated)</u>	
C08MSV-PA, C08MSV-PB, C08MSV-PC (Pilot Operated)	2-3
<u>Flow Control Valves</u>	
F08MSV-NIP	4-5
F08MSV-NOA, F08MSV-NOB, F08MSV-NOC	6-7
F08MSV-CIP	8-9
F08MSV-COA, F08MSV-COB, F08MSV-COC	10-11
<u>Cross Port Relief Valve</u>	
P08MSV-XC	12-13
<u>Pressure Reducing / Relieving Valves</u>	
P08MSV-PDRA, P08MSV-PDRB, P08MSV-PDRP	14-15
<u>Counterbalance Valve</u>	
P08MSV-CA, P08MSV-CB, P08MSV-CC	16-17
<u>Pressure Compensator</u>	
P08MSV-RCC, P08MSV-BCC	18-19
<u>Accessories</u>	
VALVE BOLT KITS	20

C08MSV-PA / C08MSV-PB / C08MSV-PC

CHECK VALVE, PILOT OPERATED



DESCRIPTION

Utilizes a cartridge-type, guided poppet, hydraulic pilot operated check valve as a blocking or load-holding device for high pressure applications.

OPERATIONS

This valve allows free flow from the work port to the outlet port and blocks flow in the opposite direction. Free flow will be allowed from the outlet port to the work port when at least one-third of the load induced pressure is sensed in the opposite work port.

FEATURES & BENEFITS

- Low friction seal on the pilot piston
- Separate heavy spring assures fast pilot piston return
- All external parts are zinc-plated for long life against elements
- All cartridges are 100% tested functionally
- Uses Sun T-9A cavity
- Anodized aluminum

SPECIFICATIONS

Valve Bodies: 3000 PSI (207 Bar) = Aluminum (2024-T4)
5000 PSI (350 Bar) = Ductile (65-45-12)

Flow: 120 GPM (424 L/M) nominal

Pilot Ratio: 3 to 1

Internal Leakage: 1 drop per minute maximum at 5000 PSI

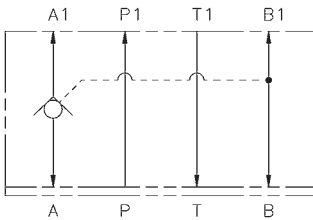
Operating Temperature: Fluid temperature up to 200°F. will not appreciably affect valve performance, however, from a safety standpoint, temperatures above 130°F. are not recommended.

Operating Media: All general purpose hydraulic fluids such as MIL-H-5606, SAE #10, SAE #20, etc.

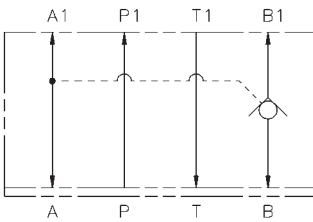
Filtration: 25 microns acceptable;
10 microns preferred

Estimated Shipping

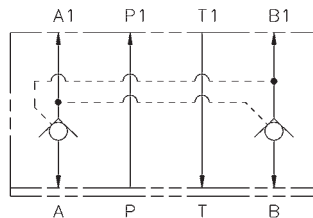
Weight: 18 # Aluminum
42 # Ductile



VALVE TYPE
PILOT OPERATED
CHECK VALVE
A-PORT



VALVE TYPE
PILOT OPERATED
CHECK VALVE
B-PORT



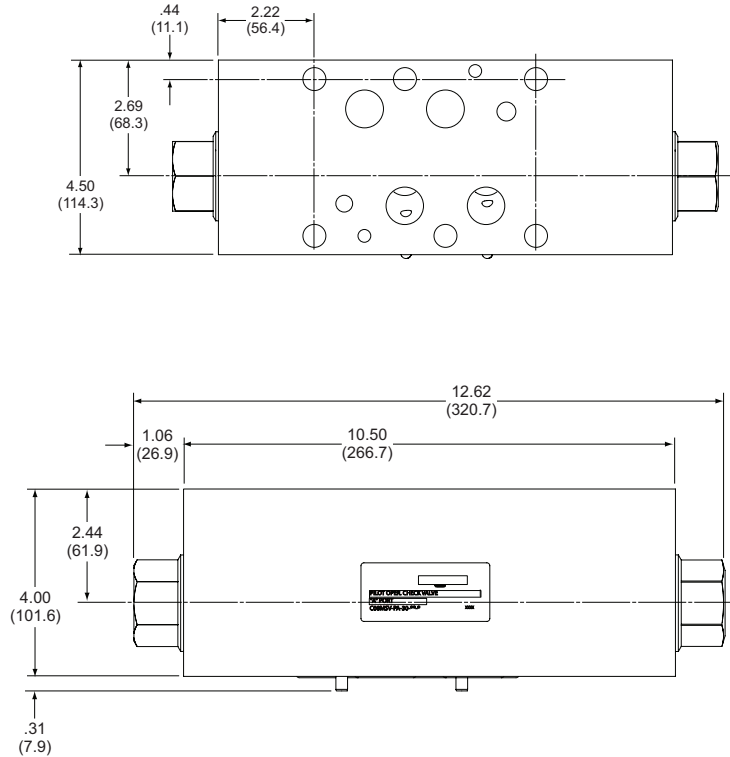
VALVE TYPE
PILOT OPERATED
CHECK VALVE
A - B PORT

C08MSV-PA / C08MSV-PB / C08MSV-PC

CHECK VALVE, PILOT OPERATED

DIMENSIONS

C08MSV-PA / C08MSV-PB / C08MSV-PC



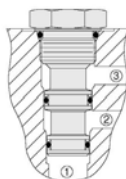
ORDERING INFORMATION

C08MSV — P — 30 — A —

FUNCTION	SIZE	STYLE	TYPE	CONTROL PORT		CRACKING PRESSURE		SEALS		BODY MATERIAL		
				CODE	LOCATION	CODE	PRESSURE	CODE		CODE		PSI RATED
CHECK VALVE	NFPA D08 NG25 (CETOP 8)	MODULAR STACK VALVE	PILOT OPERATED	C	A & B PORT	30	30 PSI	A	BUNA N (STD)	A	ALUMINUM (STD)	3000 PSI
				A	A PORT					D	DUCTILE	5000 PSI
				B	B PORT							

Body Only Assembly:

Code A, B, C Control Port:
Aluminum (Part No.) — 552875K
Ductile (Part No.) — 553066K
Includes O-rings & Locating Pin.



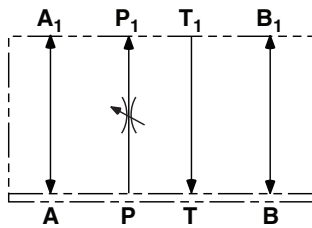
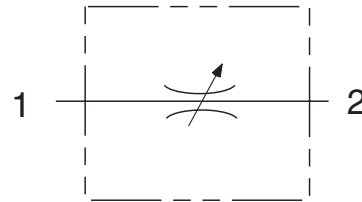
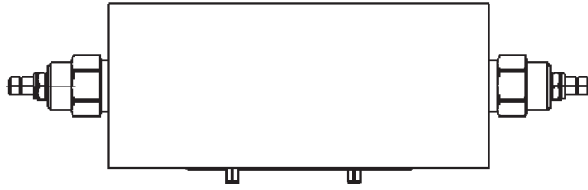
General Information:

- Cartridge cavity is Sun T-19A with flow pattern set up for checked flow port 1 to port 2, with port 3 as the pilot signal.
- Cartridge # CKIB-XCN Buna N

TYPICAL ORDERING CODE: **C08MSV-PC-30-AA**

F08MSV-NIP

FLOW CONTROL VALVE, NON-COMPENSATED



VALVE TYPE

FLOW CONTROL VALVE
P PORT

DESCRIPTION

Utilizes a screw-in cartridge type, adjustable poppet type, hydraulic flow control valve.

OPERATIONS

This valve increases its orifice value from fully closed to fully open with counter-clockwise rotation.

FEATURES & BENEFITS

- All external parts are zinc-plated for long life against elements
- All cartridges are 100% tested functionally
- Uses Sun T-18A cavity
- Industry common cavity
- Anodized aluminum

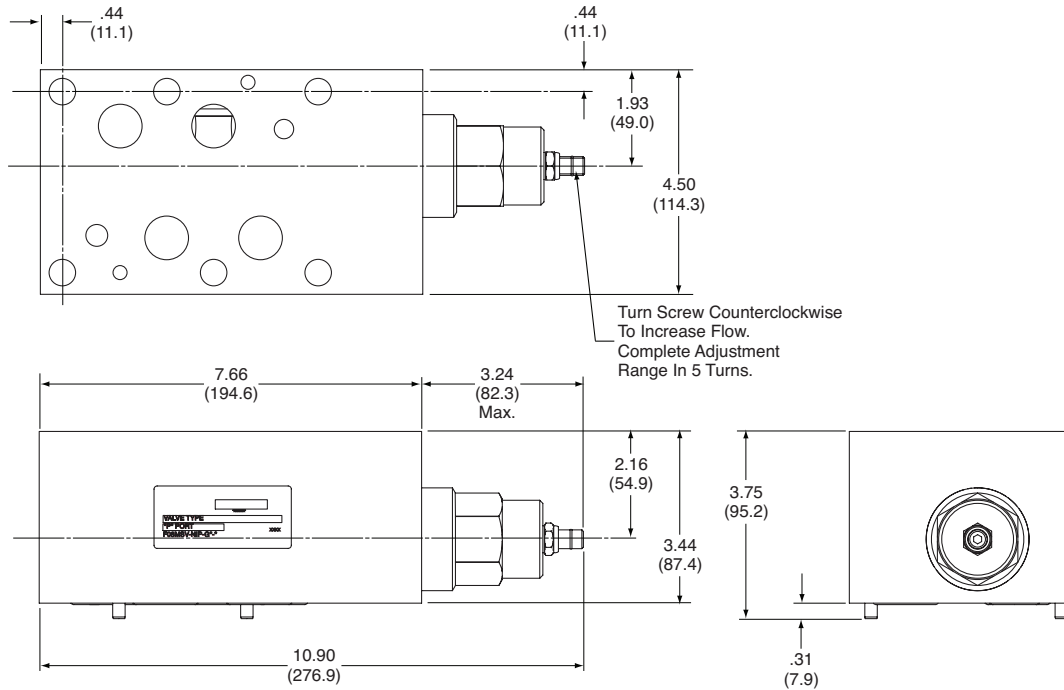
SPECIFICATIONS

Flow:	60 GPM (225 L/M) nominal Refer to performance chart
Internal Leakage:	5 drops per minute maximum at 5000 PSI (350 Bar)
Valve Bodies:	3000 PSI (207 Bar) = Aluminum (2024-T6) 5000 PSI (350 Bar) = Ductile (65-45-12)
Estimated Shipping Weight:	18 # Aluminum 42 # Ductile

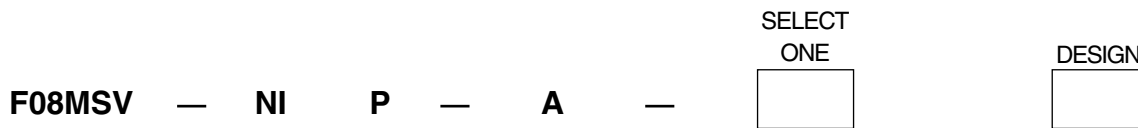
F08MSV-NIP

FLOW CONTROL VALVE, NON-COMENSATED

DIMENSIONS



ORDERING INFORMATION

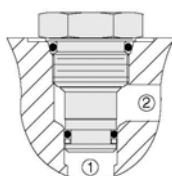


FUNCTION	SIZE	STYLE	TYPE	CONTROL PORT		SEALS		BODY MATERIAL		
				CODE	LOCATION	CODE		CODE		PSI RATED
FLOW CONTROL VALVE	NFPA D08 NG25 (CETOP 8)	MODULAR STACK VALVE	NON- COMPENSATED	P	P PORT	A	BUNA N (STD)	A	ALUMINUM (STD)	3000 PSI
								D	DUCTILE	5000 PSI

Body Only Assembly:

Aluminum (Part No.) — 552802
Ductile (Part No.) — 552962

Includes O-rings & Locating Pin.



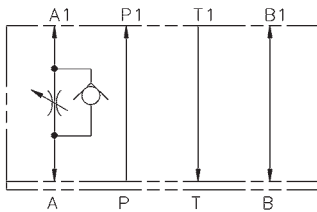
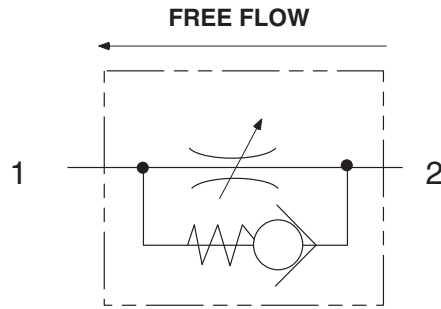
General Information:

- Cartridge cavity is Sun T18A with port flow pattern set up for cartridge flowing port 1 to port 2.
- Cartridge #: NFFC-LGN Buna N

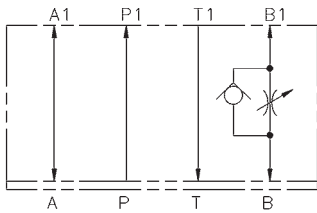
TYPICAL ORDERING CODE: **F08MSV-NIP-AA**

F08MSV-NOA / F08MSV-NOB / F08MSV-NOC

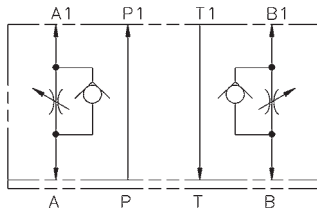
FLOW CONTROL VALVE, NON-COMPENSATED WITH CHECK



VALVE TYPE
FLOW CONTROL VALVE
WITH CHECK
METER-OUT
A PORT



VALVE TYPE
FLOW CONTROL VALVE
WITH CHECK
METER-OUT
B PORT



VALVE TYPE
FLOW CONTROL VALVE
WITH CHECK
METER-OUT
A - B PORT

DESCRIPTION

Utilizes a screw-in cartridge type, adjustable poppet type, hydraulic flow control valve with free reverse flow check.

OPERATIONS

This valve increases its orifice value from fully closed to fully open with counter-clockwise rotation.

FEATURES & BENEFITS

- All external parts are zinc-plated for long life against elements
- All cartridges are 100% tested functionally
- Uses Sun T-18A cavity
- Anodized aluminum

SPECIFICATIONS

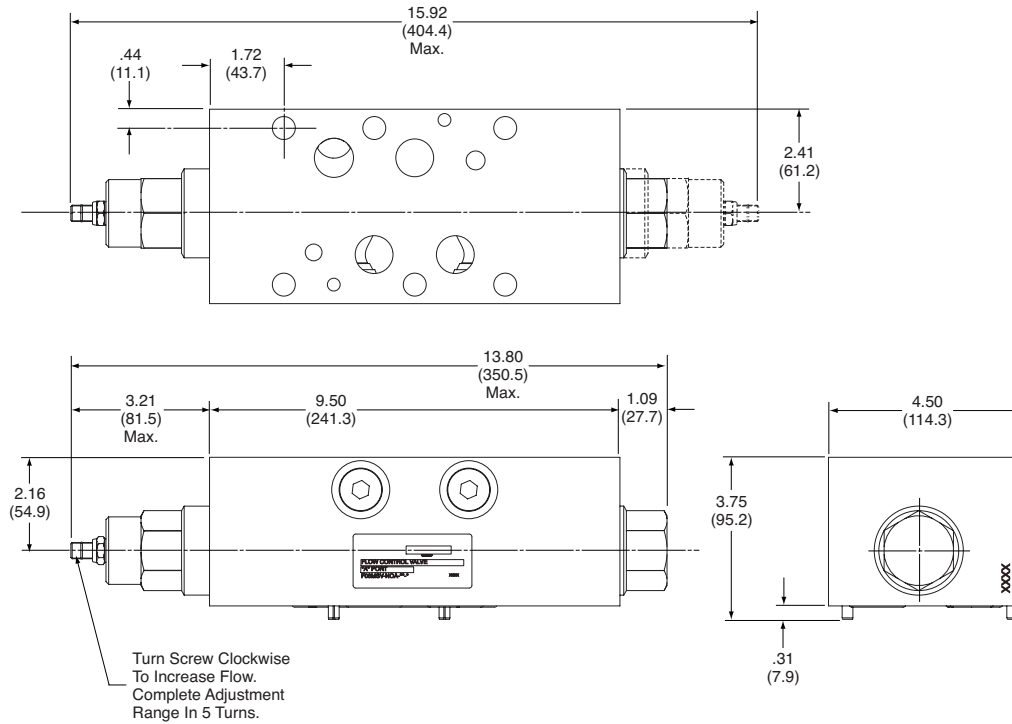
Flow:	60 GPM (225 L/M) nominal Refer to performance chart
Internal Leakage:	5 drops per minute maximum at 5000 PSI (350 Bar)
Valve Bodies:	3000 PSI (207 Bar) = Aluminum (2024-T4) 5000 PSI (350 Bar) = Ductile (65-45-12)
Estimated Shipping Weight:	18 # Aluminum 42 # Ductile

F08MSV-NOA / F08MSV-NOB / F08MSV-NOC

FLOW CONTROL VALVE, NON-COMENSATED WITH CHECK

DIMENSIONS

F08MSV-NOA / F08MSV-NOB / F08MSV-NOC



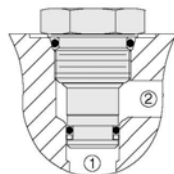
ORDERING INFORMATION

F08MSV — NO — A DESIGN

FUNCTION	SIZE	STYLE	TYPE	CONTROL PORT		SEALS		BODY MATERIAL		
				CODE	LOCATION	CODE		CODE		PSI RATED
FLOW CONTROL VALVE	NFPA D08 NG25 (CETOP 8)	MODULAR STACK VALVE	NON-COMPENSATED WITH CHECK (Meter-Out)	C	A & B PORT	A	BUNA N (STD)	A	ALUMINUM (STD)	3000 PSI
				A	A PORT			D	DUCTILE	5000 PSI
				B	B PORT					

Body Only Assembly

Aluminum (Part No.) — 552927
Ductile (Part No.) — 552959
Includes O-rings & Locating Pin



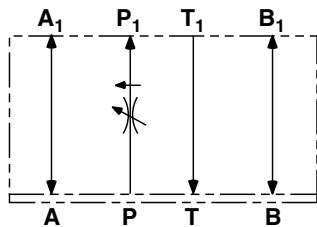
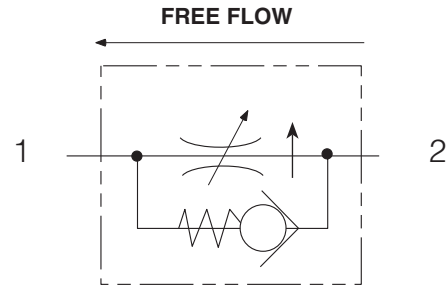
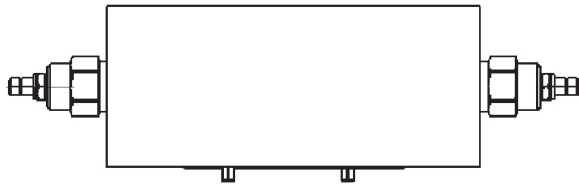
General Information

- Cartridge cavity is SUN T-18A with flow pattern
- Metered from port 1 to port 2, free flow from port 2 to port 1
- Cartridge NCGB-LCN Buna N

TYPICAL ORDERING CODE: **F08MSV-NOC-AA**

F08MSV-CIP

FLOW CONTROL VALVE, PRESSURE COMPENSATED



VALVE TYPE

PRESSURE COMPENSATED FLOW
CONTROL VALVE
METER IN P PORT

DESCRIPTION

Utilizes a screw-in cartridge type, adjustable poppet type, hydraulic flow control valve.

OPERATIONS

This valve increases its orifice value from fully closed to fully open with counter-clockwise rotation.

FEATURES & BENEFITS

- All external parts are zinc-plated for long life against elements
- All cartridges are 100% tested functionally
- Uses Sun T-18A cavity
- Anodized aluminum

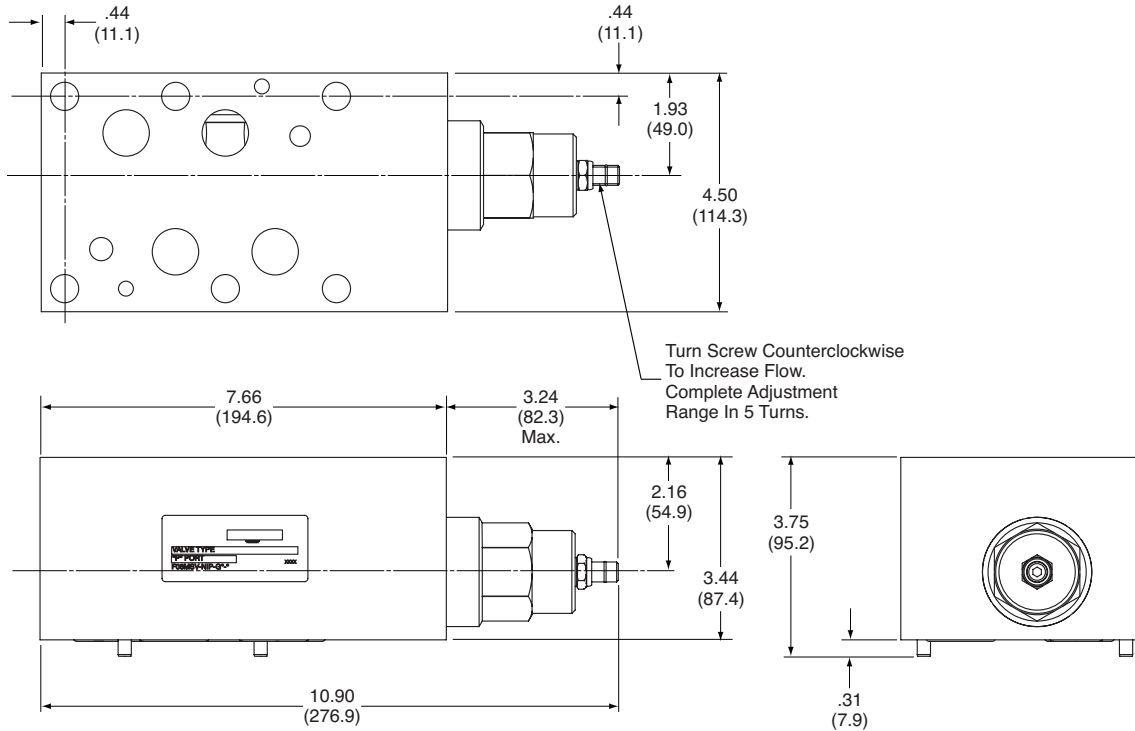
SPECIFICATIONS

Flow: 50 GPM (190 L/M) nominal
Refer to performance chart

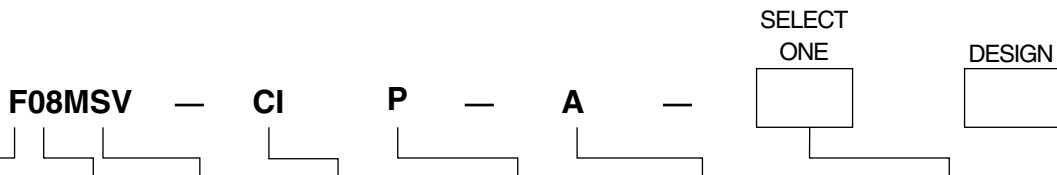
Valve Bodies: 3000 PSI (207 Bar) = Aluminum (2024-T6)
5000 PSI (350 Bar) = Ductile (65-45-12)

Estimated Shipping Weight: 18 # Aluminum
42 # Ductile

DIMENSIONS



ORDERING INFORMATION

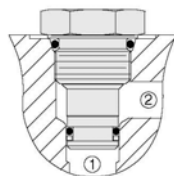


FUNCTION	SIZE	STYLE	TYPE	CONTROL PORT		SEALS		BODY MATERIAL		
				CODE	LOCATION	CODE		CODE		PSI RATED
FLOW CONTROL VALVE	NFPA	MODULAR STACK VALVE	PRESSURE COMPENSATED	P	P PORT	A	BUNA N (STD)	A	ALUMINUM (STD)	3000 PSI
	D							DUCTILE	5000 PSI	

Body Only Assembly:

Aluminum (Part No.) — 552802
 Ductile (Part No.) — 552962

Includes O-rings & Locating Pin



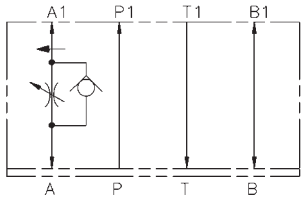
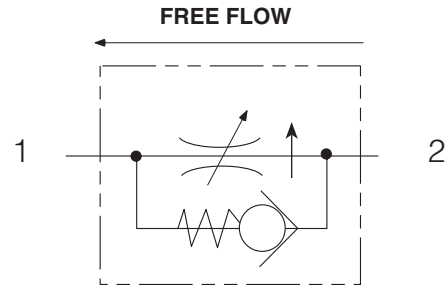
General Information:

- Cartridge cavity is Sun T18A with port flow pattern set up for cartridge flowing port 1 to port 2.
- Cartridge FDFA-LAN Buna N

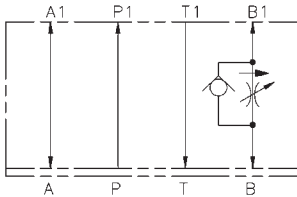
TYPICAL ORDERING CODE: **F08MSV-CIP-AA**

F08MSV-COA / F08MSV-COB / F08MSV-COC

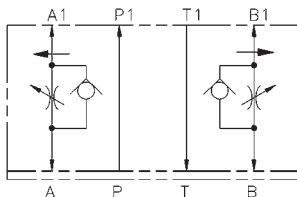
FLOW CONTROL VALVE, PRESSURE COMPENSATED WITH CHECK



VALVE TYPE
FLOW CONTROL VALVE
WITH CHECK
METER-OUT
A PORT



VALVE TYPE
FLOW CONTROL VALVE
WITH CHECK
METER-OUT
B PORT



VALVE TYPE
FLOW CONTROL VALVE
WITH CHECK
METER-OUT
A - B PORT

DESCRIPTION

This is a pressure compensated, fully adjustable flow control valve with reverse flow check.

OPERATION

This valve maintains a constant flow rate regardless of system pressure or load changes. Reverse flow will open the check at 10 PSI.

FEATURES & BENEFITS

- Sharp edge orifice to minimize flow variation
- All external parts are zinc-plated for long life against elements
- Uses Sun T-18A cavity
- 10 PSI reverse free flow check cracking pressure
- Minimum 18 cu. in./min. leakage at shutoff
- All cartridges are 100% tested functionally

SPECIFICATIONS

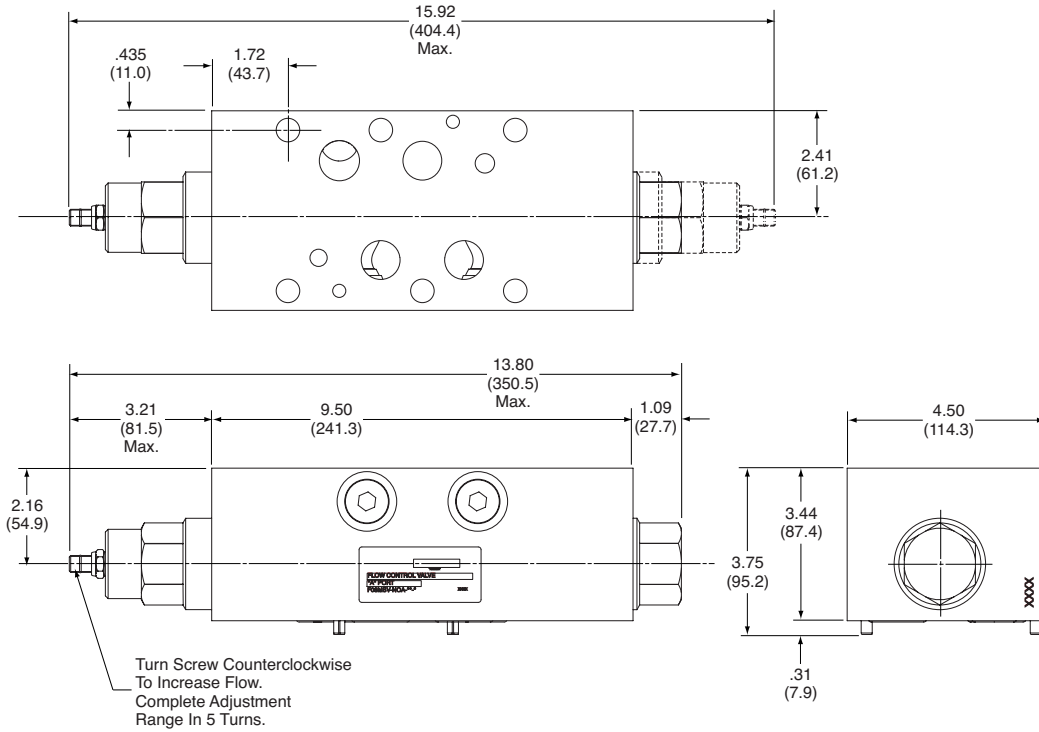
Flow:	50 GPM (190 L/M) nominal Refer to performance chart
Flow Accuracy:	Less than $\pm 5\%$ with a minimum of 200 PSI pressure differential
Valve Bodies:	3000 PSI (207 Bar) = Aluminum (2024-T4) 5000 PSI (350 Bar) = Ductile (65-45-12)
Estimated Shipping Weight:	18 # Aluminum 42 # Ductile

F08MSV-COA / F08MSV-COB / F08MSV-COC

FLOW CONTROL VALVE, PRESSURE-COMENSATED WITH CHECK

DIMENSIONS

F08MSV-COA / F08MSV-COB / F08MSV-COC



ORDERING INFORMATION

F08MSV — CO

SELECT ONE

A

SELECT ONE

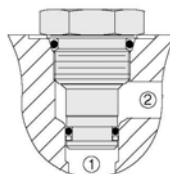
DESIGN

FUNCTION	SIZE	STYLE	TYPE	PORT		SEALS		BODY MATERIAL		
				CODE	LOCATION	CODE		CODE		PSI RATED
FLOW CONTROL VALVE	NFPA DO8 NG25 (CETOP 8)	MODULAR STACK VALVE	PRESSURE COMPENSATED WITH CHECK (METER-OUT)	A	A PORT	A	BUNA N (STD)	A	ALUMINUM (STD)	3000 PSI
				B	B PORT			D	DUCTILE	5000 PSI
				C	A & B PORT					

Body Only Assembly

Aluminum (Part No.) — 552927
Ductile (Part No.) — 552959

Includes O-rings & Locating Pin



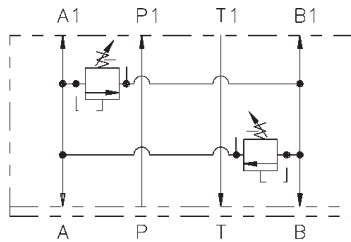
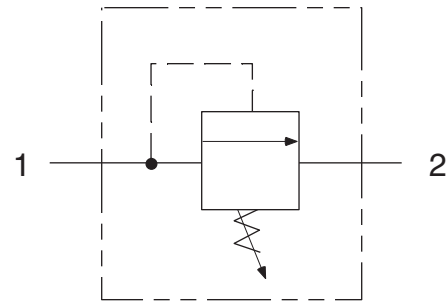
General Information

- Cartridge cavity is SUN T-18A with flow pattern metered from port 1 to port 2, free flow from port 2 to port 1
- Cartridge FDFA-LAN Buna N

TYPICAL ORDERING CODE: **F08MSV-COC-AA**

P08MSV-XC

CROSS PORT RELIEF VALVE, PILOT OPERATED



VALVE TYPE
CROSS PORT
RELIEF VALVE
A TO B / B TO A

DESCRIPTION

Utilizes a cartridge type, guided poppet, hydraulic operated check valve as a blocking or load-holding device for high pressure applications.

OPERATIONS

The valve allows free flow from the work port to the outlet port and blocks flow in the opposite direction. Free flow will be allowed from the outlet port to the work port when at least one-third of the load induced pressure is sensed in the opposing work port.

FEATURES & BENEFITS

- Low friction seal on the pilot piston
- Separate heavy spring assures fast pilot piston return
- All external parts are zinc-plated for long life against elements
- All cartridges are 100% tested functionally
- Uses Sun T-3A cavity
- Anodized aluminum

SPECIFICATIONS

Flow: 48 GPM (181 L/M) nominal

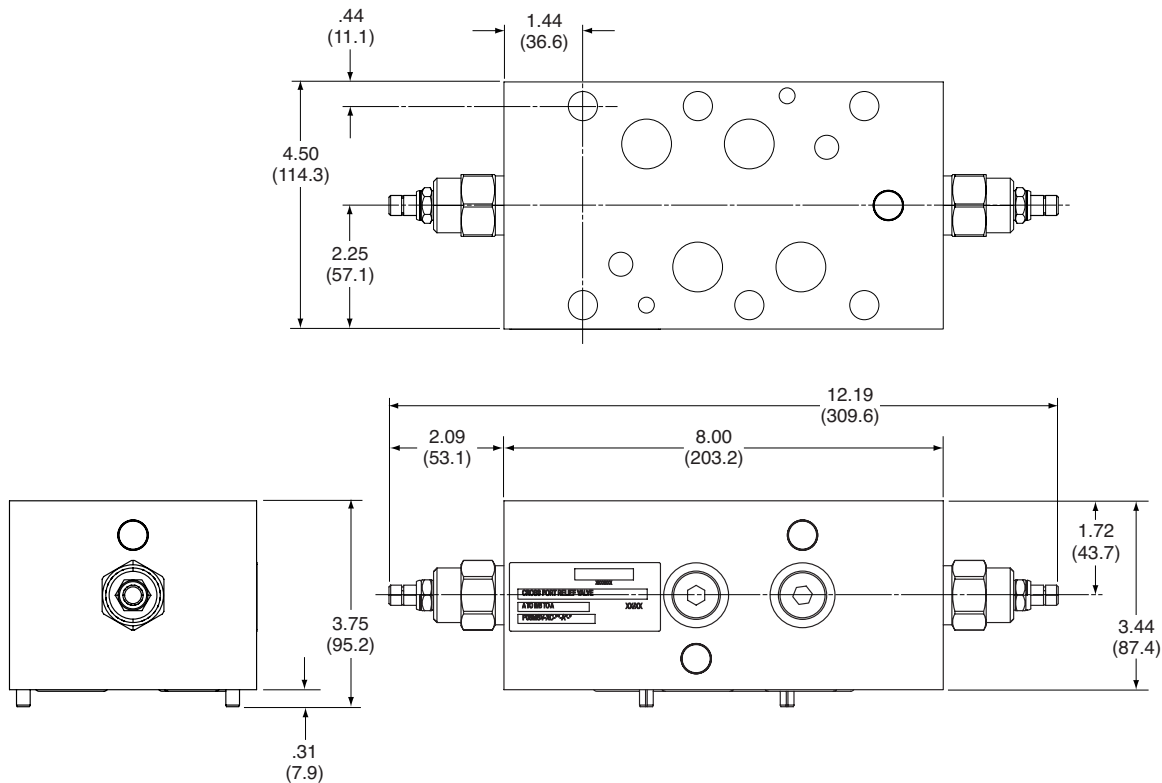
Valve Bodies: 3000 PSI (207 Bar) = Aluminum (2024-T4)
5000 PSI (350 Bar) = Ductile (65-45-12)

Estimated Shipping Weight: 18 # Aluminum
42 # Ductile

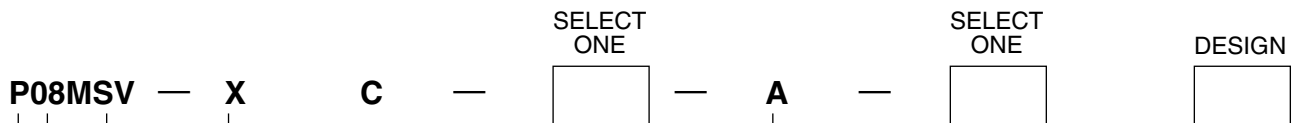
P08MSV-XC

CROSS PORT RELIEF VALVE, PILOT OPERATED

DIMENSIONS



ORDERING INFORMATION

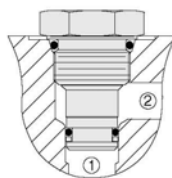


FUNCTION	SIZE	STYLE	TYPE	CONTROL PORT		PRESSURE RANGE		SEALS		BODY MATERIAL		
				CODE	LOCATION	CODE	PRESSURE	CODE		CODE		PSI RATED
PRESSURE CONTROL VALVE	NFPA	MODULAR STACK VALVE	CROSSPORT RELIEF VALVE	C	A & B PORT	150	50-1500 PSI	A	BUNA N (STD)	A	ALUMINUM (STD)	3000 PSI
	300					100-3000 PSI	D			DUCTILE	5000 PSI	
	500					5000 PSI						

Body Only Assembly:

Aluminum (Part No.) — Not Released
Ductile (Part No.) — Not Released

Includes O-rings & Locating Pin.



General Information:

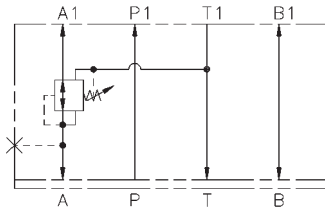
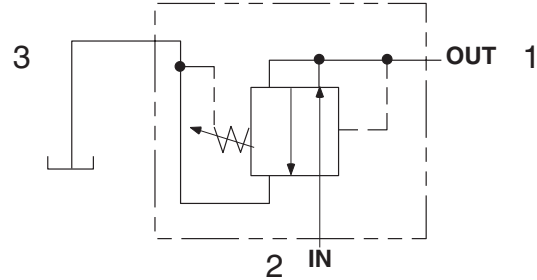
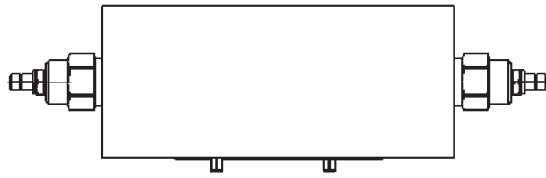
- Cartridge cavity is HydraForce C12-2 with flow pattern set up for cartridge flowing from port 1 to port 2.

Cartridge #	RPGE-LBN	Buna N	150
	RPGE-LAN	Buna N	300
	RPGE-LCN	Buna N	500

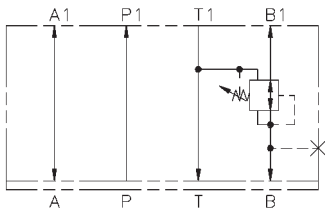
TYPICAL ORDERING CODE: **P08MSV-XC-150-AA**

P08MSV-PDRA / P08MSV-PDRB / P08MSV-PDRP

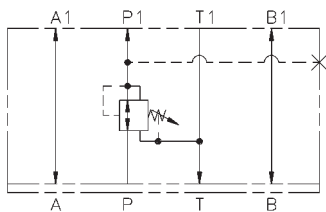
PRESSURE REDUCING / RELIEVING VALVE, PILOT OPERATED



VALVE TYPE
PRESSURE REDUCING/
RELIEVING VALVE
A-PORT



VALVE TYPE
PRESSURE REDUCING/
RELIEVING VALVE
B-PORT



VALVE TYPE
PRESSURE REDUCING/
RELIEVING VALVE
P-PORT

DESCRIPTION

This pilot operated hydraulic pressure reducing/relieving valve acts as a pressure-regulating device for a secondary circuit. It features a sliding spool and screw-in cartridge.

OPERATIONS

This valve will allow flow from the inlet port to the controlled port until pressure in the controlled port exceeds the force of the spring bias. Then the spool will shift and restrict. This causes reduced pressure in the controlled port. The valve will maintain the same pressure as the force of the spring setting regardless of the pressure at the inlet port. In this mode, the valve will also relieve from the controlled port to the drain port, regulating pressure at the controlled port.

FEATURES & BENEFITS

- Low friction seal on the pilot piston
- Separate heavy spring assures fast pilot piston return
- All external parts are zinc-plated for long life against elements
- All cartridges are 100% tested functionally
- Uses Sun T-19A cavity
- Anodized aluminum

SPECIFICATIONS

Flow: 120 GPM (424 L/M) nominal

Valve Bodies: 2500 PSI (175 Bar) = Aluminum (20224-T4)
5000 PSI (350 Bar) = Ductile (65-45-12)

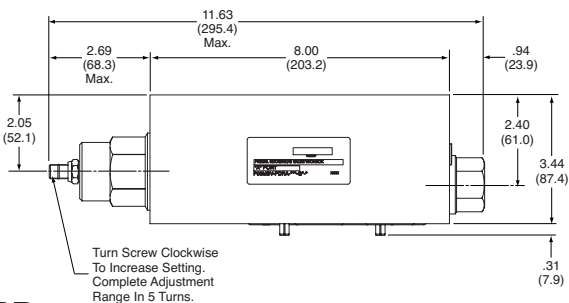
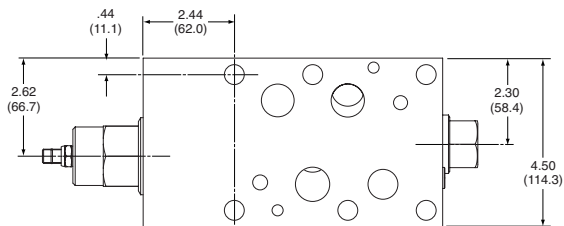
Estimated Shipping Weight: 18 # Aluminum
42 # Ductile

P08MSV-PDRA / P08MSV-PDRB / P08MSV-PDRP

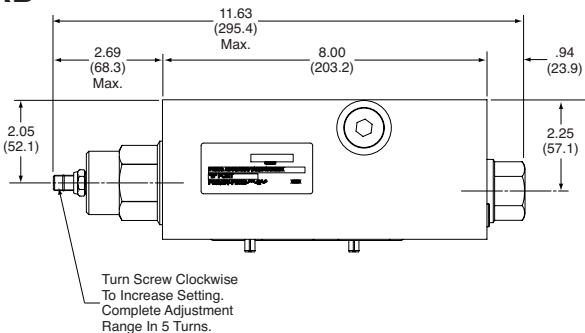
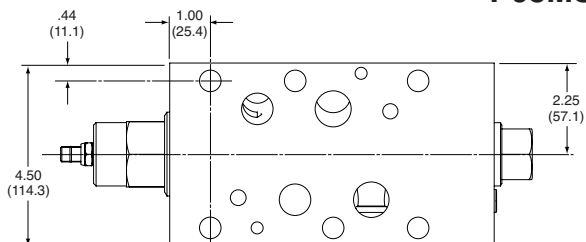
PRESSURE REDUCING / RELIEVING VALVE, PILOT OPERATED

DIMENSIONS

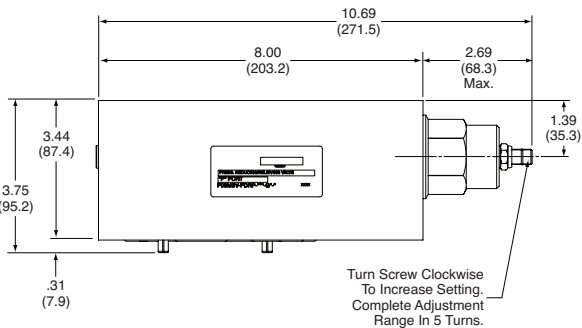
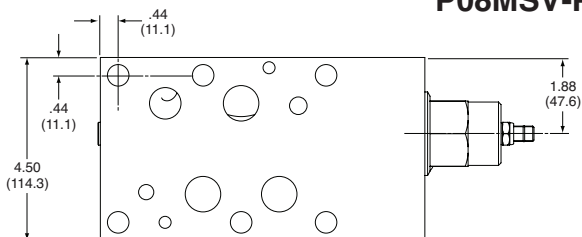
P08MSV-PDRA



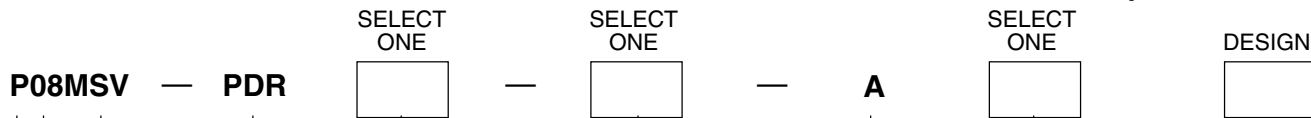
P08MSV-PDRB



P08MSV-PDRP



ORDERING INFORMATION

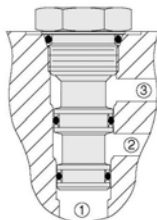


FUNCTION	SIZE	STYLE	VALVE FUNCTION	CONTROL PORT		ADJUSTMENT RANGE		SEALS		BODY MATERIAL		
				CODE	LOCATION	CODE	PRESSURE	CODE		CODE		PSI RATED
PRESSURE CONTROL VALVE	NFA D08 NG25 (CETOP 8)	MODULAR STACK VALVE	REDUCING/RELIEVING PILOT OPERATED	A	A PORT	150	50-1500 PSI	A	BUNA N (STD)	A	ALUMINUM (STD)	3000 PSI
				B	B PORT	300	100-3000 PSI			D		
				P	P PORT	450	150-4500 PSI					

Body Only Assembly:

PDRA
 Aluminum (Part No.) — 552928
 Ductile (Part No.) — Not Released
PDRB
 Aluminum (Part No.) — 552929
 Ductile (Part No.) — Not Released
PDRP
 Aluminum (Part No.) — 552930
 Ductile (Part No.) — Not Released

PDRP
 Aluminum (Part No.) - 552929
 Ductile (Part No.) - Not Released



General Information:

- Cartridge cavity is Sun T-19A with flow pattern set up for cartridge flowing from port 2 to port 1. Free flow from port 21tp port 2. Port 3 is tank.
- Cartridge #

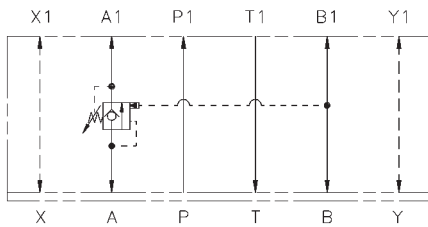
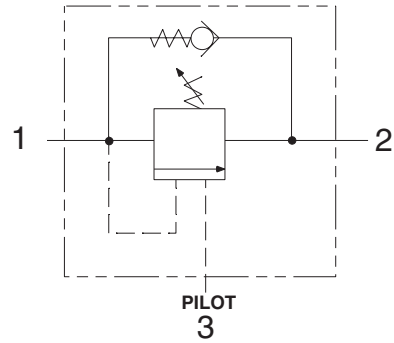
PPJB-LBN	Buna N	150
PPJB-LAN	Buna N	300
PPJB-LWN	Buna N	450

Includes O-rings & Locating Pin

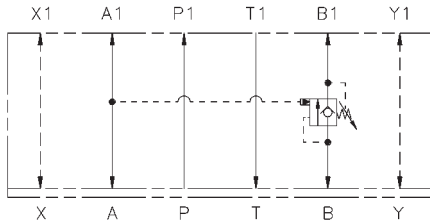
TYPICAL ORDERING CODE: **P08MSV-PDRP-AA**

P08MSV-CA / P08MSV-CB / P08MSV-CC

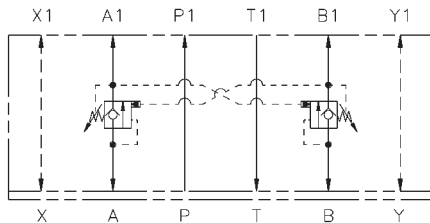
COUNTERBALANCE VALVE, PILOT OPERATED



VALVE TYPE
COUNTERBALANCE VALVE
A PORT



VALVE TYPE
COUNTERBALANCE VALVE
B PORT



VALVE TYPE
COUNTERBALANCE VALVE
A & B PORT

DESCRIPTION

Utilizes a cartridge type, guided poppet, hydraulic operated, pilot assisted, counterbalance valve as a blocking or load-holding device for high pressure applications.

OPERATIONS

The valve controls moving load and prevents it from running ahead of the pump and locking the load in any position. It also provides static overload and thermal expansion protection.

This valve is a modulating device that allows free flow from port 2 to port 1 and then blocks reverse flow until pilot pressure inversely proportional to the load pressure is sensed at port 3, modulating out flow from port 1 to port 2.

FEATURES & BENEFITS

- Leakproof screw adjustment
- Adjustment screw cannot be backed out of valve
- All external parts are zinc-plated for long life against elements
- All cartridges are 100% tested functionally
- Uses Sun T-19A cavity
- Anodized aluminum
- Low hysteresis and reliable operation

SPECIFICATIONS

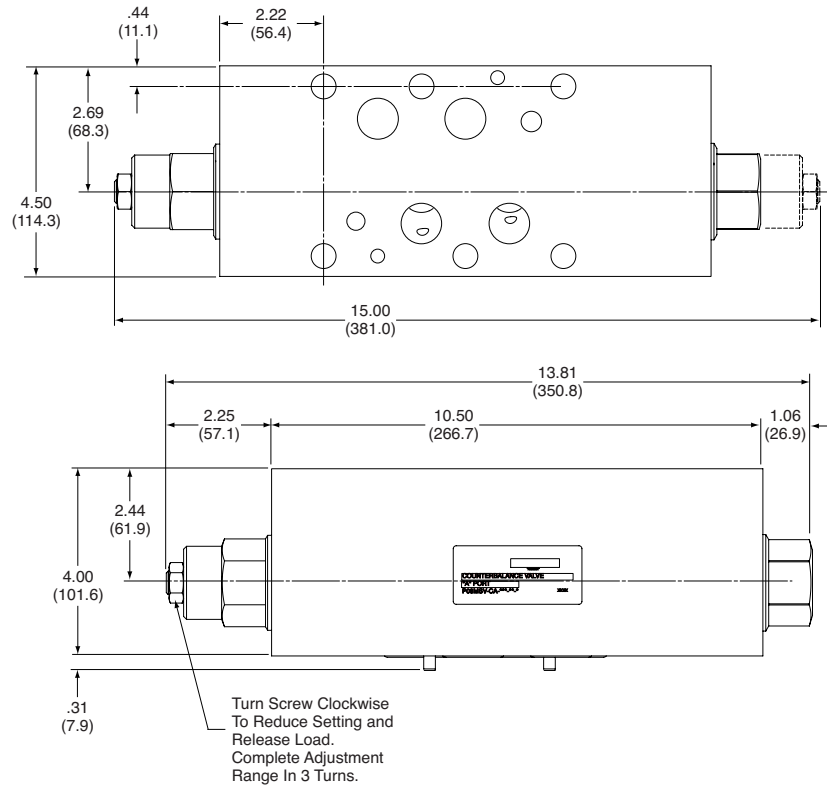
Flow:	120 GPM (424 L/M) nominal Refer to performance chart
Pilot Ratio:	4.5 to 1
Internal Leakage:	5 drops per minute maximum at 100 PSI below crack pressure
Valve Bodies:	3000 PSI (207 Bar) = Aluminum (2024-T4) 5000 PSI (350 Bar) = Ductile (65-45-12)
Estimated Shipping Weight:	18 # Aluminum 42 # Ductile

P08MSV-CA / P08MSV-CB / P08MSV-CC

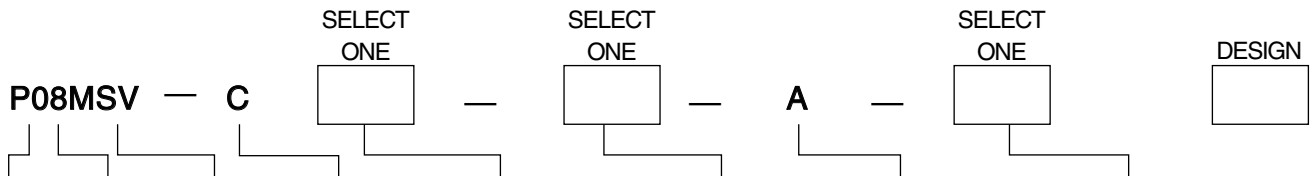
COUNTERBALANCE VALVE, PILOT OPERATED

DIMENSIONS

P08MSV-CA / P08MSV-CB / P08MSV-CC



ORDERING INFORMATION

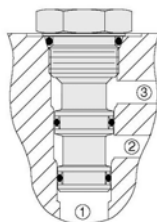


FUNCTION	SIZE	STYLE	TYPE	CONTROL PORT		CRACKING PRESSURE		SEALS		BODY MATERIAL		
				CODE	LOCATION	CODE	PRESSURE	CODE		CODE		PSI RATED
PRESSURE CONTROL VALVE	NFPA	MODULAR STACK VALVE	COUNTER-BALANCE VALVE	A	A PORT	150	400-1500 PSI	A	BUNA N (STD)	A	ALUMINUM (STD)	3000
	B			B PORT	D					DUCTILE		
	C			A & B PORT	400	1000-4000 PSI						

Body Only Assembly:

Aluminum (Part No.) — 552875
Ductile (Part No.) — Not Released

Includes O-rings & Locating Pin.



General Information:

- Cartridge cavity is Sun T19A with flow pattern set up for cartridge flowing port 1 to port 2. Free flow from port 2 to port 1. Port 3 is pilot pressure.
- Cartridge #

CBIA-LIN	Buna N	150
CBIG-LKN	Buna N	400

TYPICAL ORDERING CODE: **P08MSV-CB-150-AA**

P08MSV-RCC / P08MSV-BCC

PRESSURE COMPENSATOR



DESCRIPTION

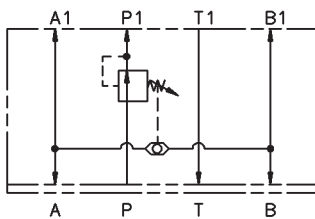
Utilizes a cartridge type pressure reducing or relief valve to create a constant pressure differential between the inlet and the outlet of an orifice or valve.

OPERATIONS

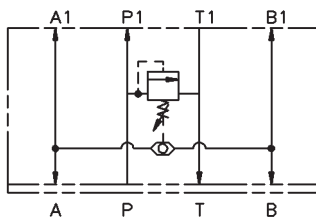
The valve controls the pressure drop by sensing the pressures in port A & B which is added to the spring setting causing the valve to open or close so it maintains a constant pressure drop. This will improve your system performance when widely changing loads are seen.

FEATURES & BENEFITS

- Low friction seal on the pilot piston
- All external parts are zinc-plated for long life
- All cartridges are 100% tested functionally
- Uses Sun T-19A cavity for cartridge
- Uses HydraForce VC04-B3 cavity for shuttle



VALVE TYPE
PRESSURE COMPENSATOR
(RESTRICTIVE)



VALVE TYPE
PRESSURE COMPENSATOR
(BY-PASS)

SPECIFICATIONS

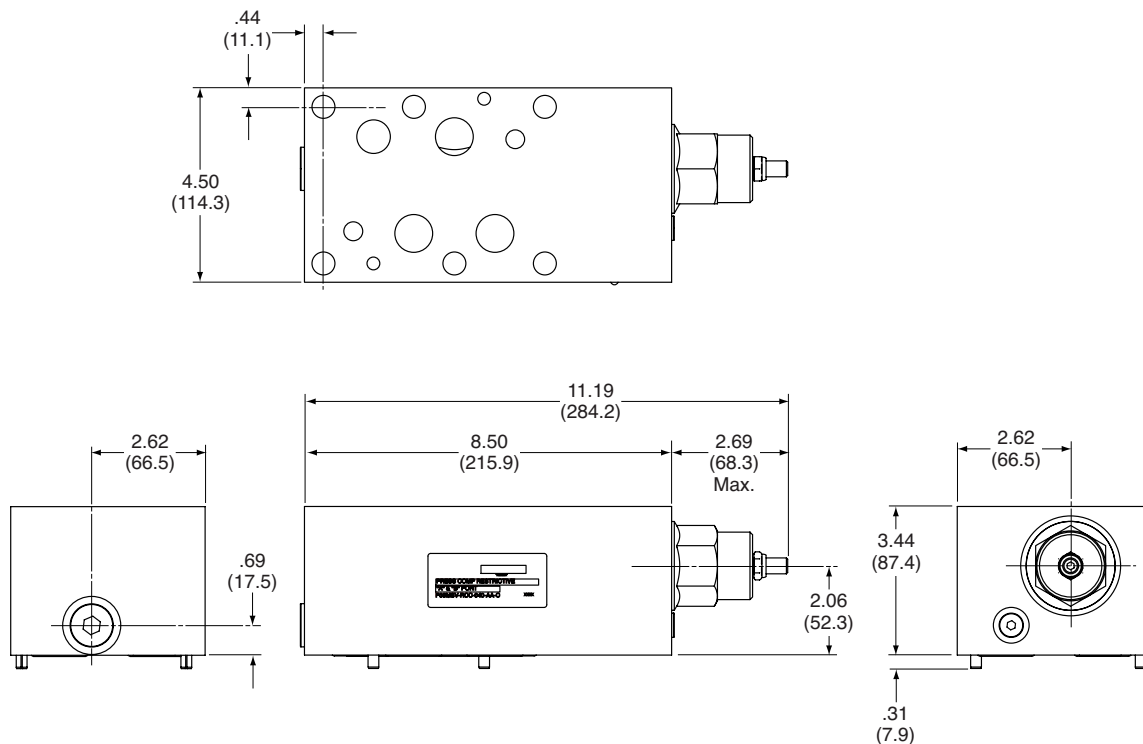
Flow:	RCC 120 GPM (424 L/M) nominal BCC 80 GPM (302 L/M) nominal
Internal Leakage:	5 drops per minute maximum at 5000 PSI (350 Bar)
Valve Bodies:	3000 PSI (207 Bar) = Aluminum (2024-T4) 5000 PSI (350 Bar) = Ductile (65-45-12)
Estimated Shipping Weight:	18 # Aluminum 42 # Ductile

P08MSV-RCC / P08MSV-BCC

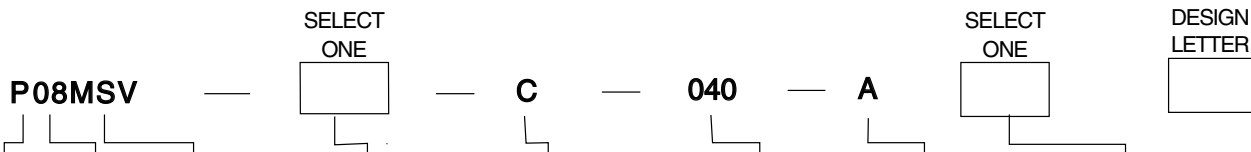
PRESSURE COMPENSATOR

DIMENSIONS

P08MSV-RCC / P08MSV-BCC



ORDERING INFORMATION



FUNCTION	SIZE	STYLE	DESCRIPTION		PORT		PRESSURE RANGE			SEALS		BODY MATERIAL		
			CODE		CODE	PORT	CODE	PSI	BAR	CODE		CODE		PSI RATED
PRESSURE CONTROL VALVE	NFPA	MODULAR	RC	PRESSURE COMPENSATOR (RESTRICTIVE)	C	A & B PORT	040	60-400	4.1-27.5	A	BUNA N (STD)	A	ALUMINUM	3000 PSI
	D08	STACK VALVE	BC	PRESSURE COMPENSATOR (BY-PASS)								D	DUCTILE	5000 PSI
	NG25 (CETOP 8)													

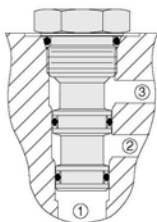
Body Only Assembly: Buna N

RCC

Aluminum (Part No.) — 552987
Ductile (Part No.) — Not Released

BCC

Aluminum (Part No.) — 552987
Ductile (Part No.) — Not Released



General Information

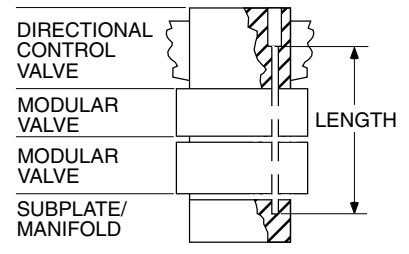
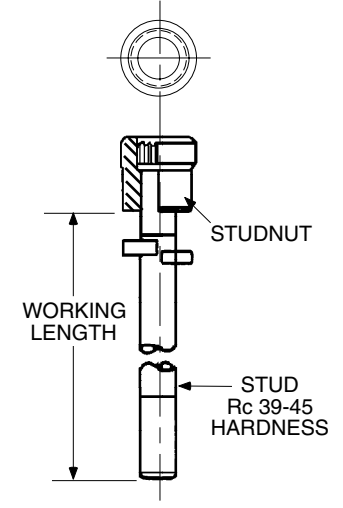
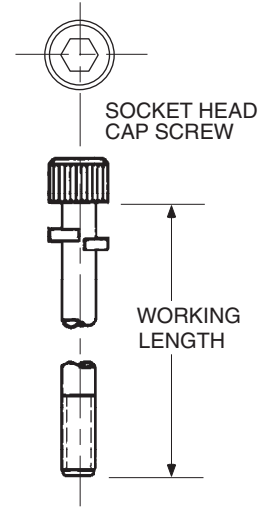
- Cartridge cavity is SUN T-19A with RCC flow pattern set up for cartridge flowing port 2 to port 1. Port 3 is A or B sensor. BCC flow pattern set up for cartridge flowing port 1 to port 2. Port 3 is A or B sensor.

Cartridge #	RCC	PBJB-LQN	Buna N
	BCC	RSJC-LEN	Buna N
	Shuttle	LS04-B30-0-N	Buna N

TYPICAL ORDERING CODE: **P08MSV-RCC-040-AA**

VALVE BOLT KITS

MODULAR STACK VALVE	VALVE STACK(MM) INCH	ORDER CODE	TYPE	WORKING LENGTH (MM) INCH	WEIGHT lbs. (kg)
V5M / VD03M NFPA D03 CETOP 3 NG6 KIT: (4) 10-24NC FASTENERS (4) #10 LOCKWASHERS	DIRECTIONAL VALVE ONLY	BD03-100	BOLT	(25.5) 1.00	(0.02) 0.05
	VALVE + (1)(40.0)MODULAR 1.57 STACK	BD03-250	BOLT	(63.8) 2.50	(0.04) 0.08
	VALVE + (1)(50.0)MODULAR 1.96 STACK	BD03-300	BOLT	(76.0) 3.00	(0.05) 0.13
	VALVE + (2)(40.0)MODULAR 1.57 STACK	BD03-4125	BOLT	(104.8) 4.125	(0.08) 0.18
	VALVE +(1)(40.0) +(1)(50.0) MODULAR 1.57 1.96	BD03-450	BOLT	(114.0) 4.50	(0.09) 0.20
	VALVE + (3)(40.0)MODULAR 1.57 STACK	BD03-575	BOLT	(146.0) 5.75	(0.10) 0.23
	VALVE+ (2) (40.0) MODULAR 1.57 STACK	BD03-460	STUD	(104.8) 4.125	(0.08) 0.18
	VALVE + (3)(40.0)MODULAR 1.57 STACK	BD03-616	STUD	(146.0) 5.75	(0.10) 0.23
V12M / VD0-5M NFPA D05 CETOP 5 NG10 KIT: (4) 1/4-20NC FASTENERS (4) 1/4" LOCKWASHERS	DIRECTIONAL VALVE ONLY	BD05-175	BOLT	(44.6) 1.75	(0.05) 0.11
	VALVE + (1)(55.0)MODULAR 2.17 STACK	BD05-400	BOLT	(102.0) 4.00	(0.10) 0.24
	VALVE + (2)(55.0)MODULAR 2.17 STACK	BD05-6125	BOLT	(155.6) 6.125	(0.20) 0.44
	VALVE + (3)(55.0)MODULAR 2.17 STACK	BD05-825	BOLT	(209.6) 8.25	(0.25) 0.55
	VALVE + (2)(55.0)MODULAR 2.17 STACK	BD05-667	STUD	(155.6) 6.125	(0.20) 0.44
	VALVE + (3)(55.0)MODULAR 2.17 STACK	BD05-884	STUD	(209.6) 8.25	(0.25) 0.55
V50M / VD08M DVS50M NFPA D08 CETOP 8 NG25 (6) 1/2-13NC FASTENERS (6) 1/2" LOCKWASHERS	DIRECTIONAL VALVE ONLY	BD08-275	BOLT	(70.1) 2.75	(0.57) 1.25
	VALVE + (1)(88.9)MODULAR 3.44 STACK	BD08-625	BOLT	(159.4) 6.25	(1.02) 2.25
	VALVE + (1)(101.6)MODULAR 4.00 STACK	BD08-675	BOLT	(172.1) 6.75	(1.08) 2.40
	VALVE + (2)(88.9)MODULAR 3.44 STACK	BD08-9625	BOLT	(244.5) 9.625	(1.70) 3.75
	VALVE +(1) (88.9)+(1)(101.6) MODULAR 3.44 4.00	BD08-1020	BOLT	(260.0) 10.25	(1.81) 4.00
	VALVE + (2)(101.6)MODULAR 4.00 STACK	BD08-1080	BOLT	(273.0) 10.75	(1.87) 4.13
	VALVE + (2)(88.9)MODULAR 3.44 STACK	BD08-1025	STUD	(244.5) 9.625	(1.70) 3.75
	VALVE +(1) (88.9) +(1)(101.6) MODULAR 3.44 4.00	BD08-1075	STUD	(260.0) 10.25	(1.81) 4.00
	VALVE +(2)(101.6)MODULAR 4.00 STACK	BD08-1125	STUD	(273.0) 10.75	(1.87) 4.13
V100M / VD10M NFPA D10 CETOP 10 KIT: (6) 3/4-10NC FASTENERS (6) 3/4" LOCKWASHERS	DIRECTIONAL VALVE ONLY	BD10-250	BOLT	(63.8) 2.50	(1.19) 2.63
VALVE					
F12M NFPA 2F06 KIT: (4) 5/16"-18NC FASTENERS (4) 5/16" LOCKWASHERS	FLOW CONTROL	B2F06-225	BOLT	(57.8) 2.25	(0.11) 0.25



When reliability and durability count....count on Continental Hydraulics!

Continental Hydraulics is a world leading hydraulic components manufacturer. Since 1955 we've been designing and manufacturing hydraulic equipment to withstand the most demanding applications. Continental Hydraulics is ISO 9001:2000 Certified.

Our Approach

Continental Hydraulics welcomes the opportunity to work with you to help design your hydraulic system from the ground up. Our Application specialists and our trained local support Distributors can advise you of the most efficient, cost-effective components available off the shelf, or work with you on custom designs to meet your needs.

Product Characteristics

Continental Hydraulic's products are designed to provide maximum overall value. Reliability, durability, and efficiency are designed in. Ease of maintenance, quiet operation and low operating costs are common design features.

Product Lineup

Pumps

- PVR Vane Pumps, rugged duty pumps for medium pressure applications
- PVX Vane Pumps, quiet pumps for higher pressure applications
- HPV Piston Pumps, efficient pumps for higher pressure applications

Valves

- D03/5/8/10 Directional Control Valves, for a variety of applications
- D03/5/8 Proportional Control Valves offer more control options, from programmable On-board amplifiers to panel and Euro card mounts.
- Modular Stack Valves for controlling flows and pressures in industrial and/or mobile applications
- Cartridge Valves for controlling flows and pressures in compact applications

Power Units

- Little Champ series for smaller and/or economical applications
- JIC and L-Shape series for larger industrial applications

- Available from fractional horse power and 3 gallon tank size, to 100 horse power, 330 gallon tank, straight out of the catalog.
- Custom Designed and larger units to match your application, exactly

Continental Hydraulics manufactured components are covered by a 3 year warranty!

How can we help you?

Contact your Continental Hydraulics representative for solutions to your toughest hydraulics problems. Whether it's reducing your operating expenses, or increasing your production capability, you can count on Continental Hydraulics!



CONTINENTAL



HYDRAULICS™

5505 West 123rd Street • Savage, MN 55378-1299 • Ph: 952.895.6400 • Fax: 952.895.6444 • www.continentalhydraulics.com

Form No. 1004537 Rev. 8/08 © 2008 Continental Hydraulics. All rights reserved. Product specifications and appearance are subject to change without notice.