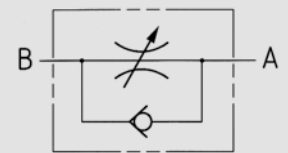


PORTING PATTERN



AVAILABLE SIZES

DN6 - DN40 (1/4" to 1 1/2")

ACCESSORIES ON REQUEST

- Panel mounting kit page 209

MATERIAL CODE DESCRIPTION

Materials	8A	88
Body	Steel	Steel
O-rings	NBR	FPM
Tmin /Tmax	-20°C / 100°C	-20°C / 100°C
Cracking pressure	0,5 bar*	0,5 bar*

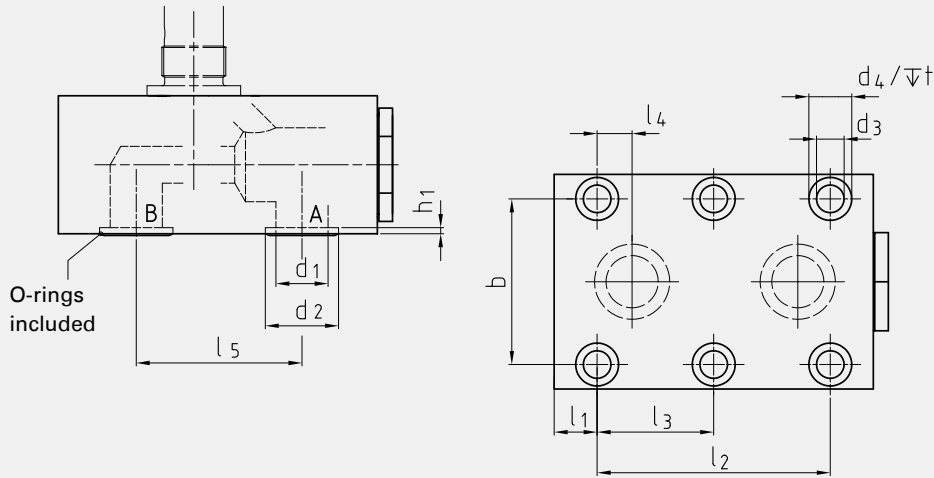
*Option: Cracking pressure PÖ 4,5 bar

GENERAL DIMENSIONS

Type	H ₁	H ₂	m	h	B	l	L ₁	L ₂	D	G	Weight [kg]
NDRVP-DN6	59	64	8	16	41,5	13,5	41,5	47	24	Pg 7	0,26
NDRVP-DN8	72	79	10	20	46	31	63,5	70	29	Pg 11	0,50
NDRVP-DN10	78	84	12,5	25	51	29,5	70	75	29	Pg 11	0,80
NDRVP-DN12	96	107	16	32	57,5	36,5	80	86	38	Pg 16	1,20
NDRVP-DN16	118	128	22,5	45	70	49	104	110	38	Pg 16	2,50
NDRVP-DN20	147	159	25	50	76,5	49	127	133	49	Pg 29	3,90
NDRVP-DN25	152	164	27,5	55	100	77	165,5	171	49	Pg 29	6,70
NDRVP-DN30	172	184	37,5	75	115	85	186	192	49	Pg 29	11,00
NDRVP-DN40	197	209	50	100	140	64	192,5	206	49	Pg 29	18,80

! Due to spring and manufacturing tolerances cracking pressures may deviate by ±30%.

ASSEMBLY DIMENSIONS



ASSEMBLY DIMENSIONS

ORDER CODE PER MATERIAL COMBINATION

Type	b	l ₁	l ₂	l ₃	l ₄	l ₅	d ₁	d ₂	h ₁	d ₃	d ₄	t	Dimension of screws (min) ⁽¹⁾	Torque of screws in Nm ⁽¹⁾	O-ring	PN [bar]	8A	88
NDRVP-DN6	28,5	6,4	19	-	1,6	16	5	9,8	1,2	6,5	10,5	6,8	4x M6x20 - 8.8	9	6,35x1,78	350	31919*	17467*
NDRVP-DN8	33,5	14,2	35	-	4,5	25,5	7	12,4	1,4	6,5	10,5	6,8	4x M6x25 - 8.8	9	8,5x2	350	20318*	35034*
NDRVP-DN10	38	18	33,5	-	4	25,5	10	15,7	1,4	6,5	10,5	6,8	4x M6x30 - 10.9	12	12x2	350	18958*	19205*
NDRVP-DN12	44,5	21	38	-	4	30	13	18,7	1,4	6,5	10,5	6,8	4x M6x35 - 12.9	14	15x2	350	18959*	35035*
NDRVP-DN16	54	14	76	38	11,4	54	17	23,9	1,9	8,5	13,5	9	6x M8x50 - 10.9	30	19x2,5	350	19717*	35036*
NDRVP-DN20	60	16	95	47,5	19	57	22	30,5	2,2	8,5	13,5	9	6x M8x55 - 12.9	35	25x3	350	32987*	30945*
NDRVP-DN25	76	15	120	60	20,6	79,5	28,5	37,5	2,2	10,5	16,5	11	6x M10x60 - 12.9	70	32x3	350	31920*	35037*
NDRVP-DN30	92	15	143	71,5	23,8	95	35	43,5	2,2	13	19	13	6x M12x85 - 10.9	100	38x3	350	32563*	35038*
NDRVP-DN40	111	16	133,5	67	25,5	89	47,5	57,5	2,2	13	19	13	6x M12x110 - 12.9	130	52x3	350	34147*	35039*

⁽¹⁾ Fixing screws not included.

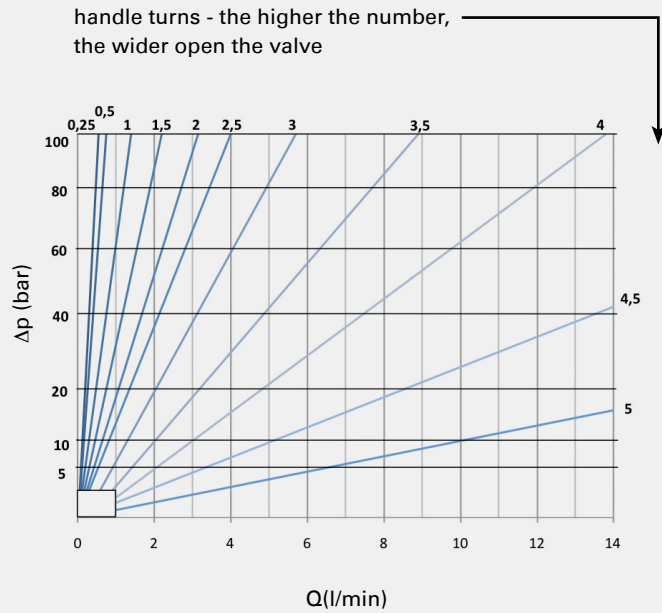
*Article usually in stock.

We recommend screws as per ISO4762 (DIN 912). The indicated property classes and torques represent our recommended guidelines at a friction coefficient of 14%.

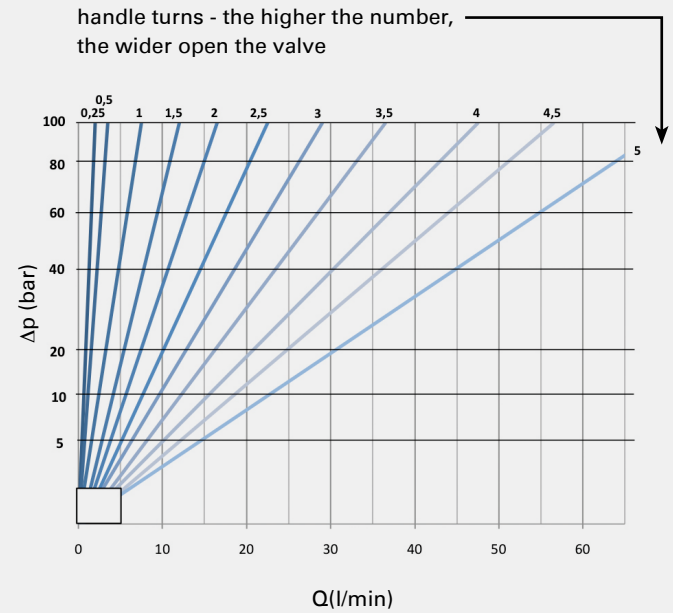
**⚠ Flow control valves should not be used as shut-off device. Small leakage rates may occur in fully closed position. (DIN EN 12266 - leakage rate A-B - test medium water)
Leakage rate of check valve - DIN EN 12266 - leakage rate C-D**

The flow values are valid for hydraulic oil (spissitude 880 kg/m³) and the kinematic viscosity ν of 35 mm²/s.

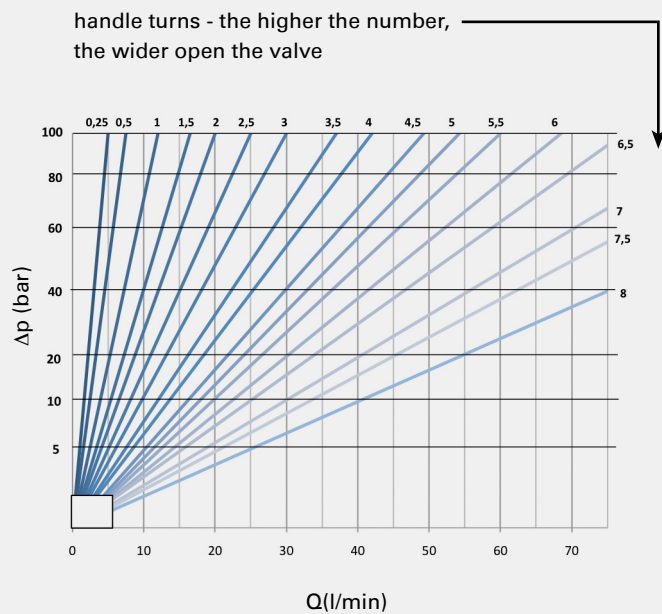
NDV/NDRV/NDVP/NDRVP-DN6



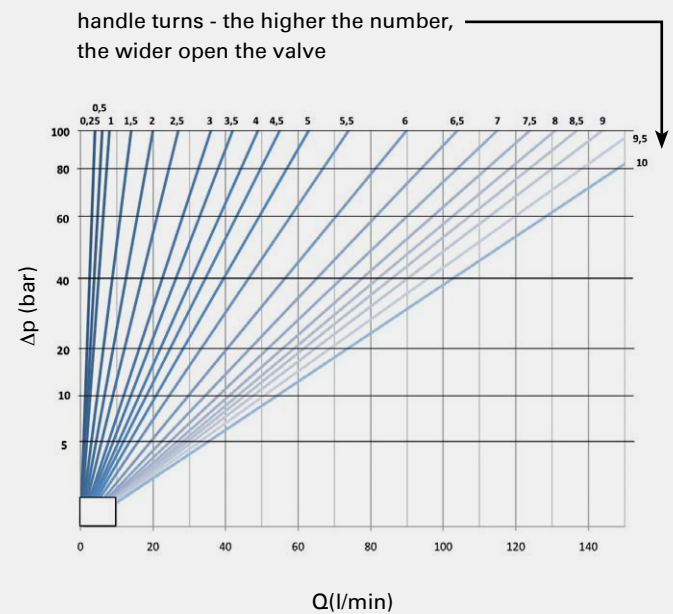
NDV/NDRV/NDVP/NDRVP-DN8



NDV/NDRV/NDVP/NDRVP-DN10



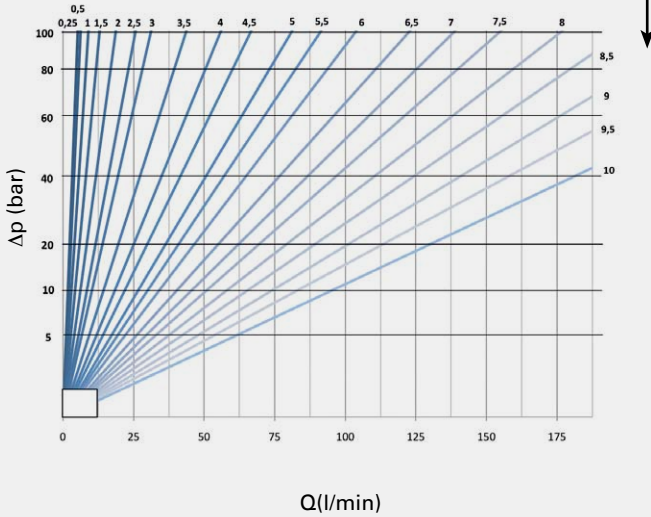
NDV/NDRV/NDVP/NDRVP-DN12



The flow values are valid for hydraulic oil (spissitude 880 kg/m³) and the kinematic viscosity ν of 35 mm²/s.

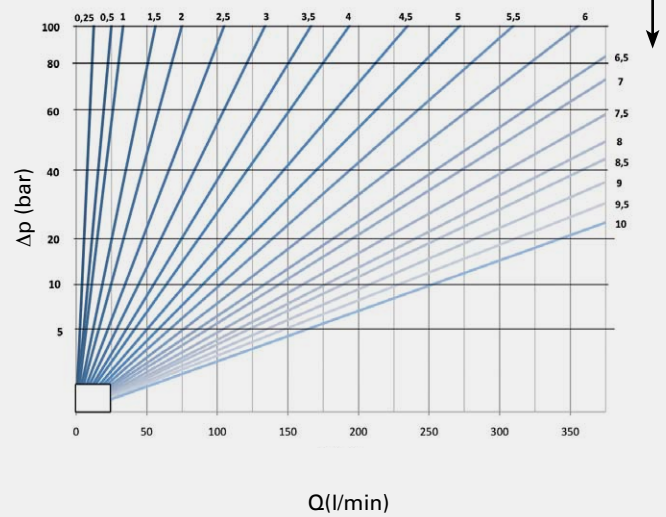
NDV/NDRV/NDVP/NDRVP-DN16

handle turns - the higher the number, the wider open the valve



NDV/NDRV/NDVP/NDRVP-DN20/25/30/40

handle turns - the higher the number, the wider open the valve



NDRV/NDRVP-DN6 - DN40

Flow direction: B-A

Δp characteristic line free flow through check valve

