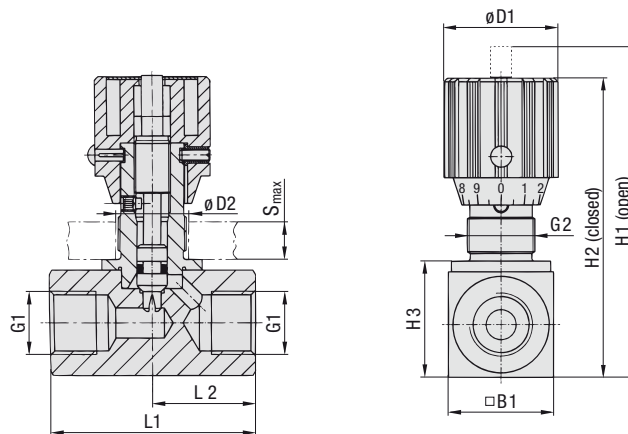


Throttle and Shut-Off Valve - Type DV (In-Line Assembly)



Characteristics

Throttle and shut-off the flow of liquid media in both directions

Features

- Designed for in-line assembly with female BSP, NPT and SAE threaded connections
- Panel mounting nuts available on request
- Graduated turning knob and coded spindle to accurately control flow
- Set-screw located on side of turning knob to lock valve in position

Media Compatibility

- Suitable for hydraulic fluids

Please consult STAUFF before using with other media.

Materials

- Body and spindle made of Steel (1.0715), zinc/iron-plated (Fe/Zn Fe Co 8 C) and free of hexavalent chromium CrVI (standard option); Stainless Steel (1.4571) version available
- Turning knob made of Polyamide (PA)
- O-rings made of NBR (Buna-N®); FPM (Viton®) and EPDM sealed version available

Consult STAUFF for alternative materials.

Technical Data

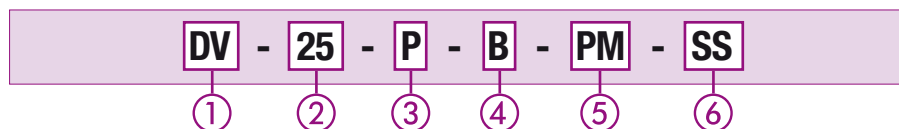
- Maximum working pressure: 350 bar / 5000 PSI (for all sizes)
- Operating temperature range: -20°C ... +100°C / -4°F ... +212°F

Please see page F76 for detailed flow characteristics.

Dimensions

Type + Nominal Size	Thread Options G1	Dimensions (mm/in)											Weight (kg/lbs)
			G2	H1	H2	H3	B1	ØD1	ØD2	S (Max.)	L1	L2	
DV-06	G1/8 BSP 1/8 NPT	PG 7	64	59	18	16	24	13	3	38	19	0,12	
			2.52	2.32	.71	.63	.94	.51	.12	1.50	.75	.26	
DV-08	G1/4 BSP 1/4 NPT 7/16-20 UNF (1/4" SAE)	PG 11	83,5	77,5	27	25	29	19	7	48	24	0,25	
			3.29	3.05	1.06	.98	1.14	.75	.28	1.89	.94	.55	
DV-10	G3/8 BSP 3/8 NPT 9/16-18 UNF (3/4" SAE)	PG 11	90	83	32	30	29	19	7	58	29	0,40	
			3.54	3.27	1.26	1.18	1.14	.75	.28	2.28	1.14	.88	
DV-12	G1/2 BSP 1/2 NPT 3/4-16 UNF (1/2" SAE)	PG 11	109,5	99,5	38	35	38	23	7	68	34	0,60	
			4.31	3.92	1.50	1.38	1.50	.91	.28	2.68	1.34	1.32	
DV-16	G3/4 BSP 3/4 NPT 1-1/16-12 UN (3/4" SAE)	PG 16	128,5	118,5	48	45	38	23	7	78	39	1,10	
			5.06	4.67	1.89	1.77	1.50	.91	.28	3.07	1.54	2.43	
DV-20	G1 BSP 1 NPT 1-5/16-12 UN (1" SAE)	PG 16	159	146	55	50	49	38	10	108	54	2,40	
			6.26	5.75	2.17	1.97	1.93	1.50	.39	4.25	2.13	5.29	
DV-25	G1-1/4 BSP 1-1/4 NPT 1-5/8-12 UN (1-1/4" SAE)	PG 29	169	156	65	60	49	38	10	108	54	2,80	
			6.65	6.14	2.56	2.36	1.93	1.50	.39	4.25	2.13	6.17	
DV-30	G1-1/2 BSP 1-1/2 NPT 1-7/8-12 UN (1-1/2" SAE)	PG 29	175	166	75	70	49	38	10	108	54	3,50	
			6.89	6.54	2.95	2.76	1.93	1.50	.39	4.25	2.13	7.72	
DV-40	G2 BSP 2 NPT 2-1/2-12 UN (2" SAE)	PG 29	199	186	95	90	49	38	10	120	60	6,30	
			7.83	7.32	3.74	3.54	1.93	1.50	.39	4.72	2.36	13.89	

Order Codes



① Type

Throttle and Shut-Off Valve (In-Line Assembly) **DV**

② Nominal Size DN

06 08 10 12 16 20 25 30 40

③ Sealing Material

NBR (Buna-N®) (standard option) **P**
 FPM (Viton®) **V**
 EPDM **E**

④ Connection

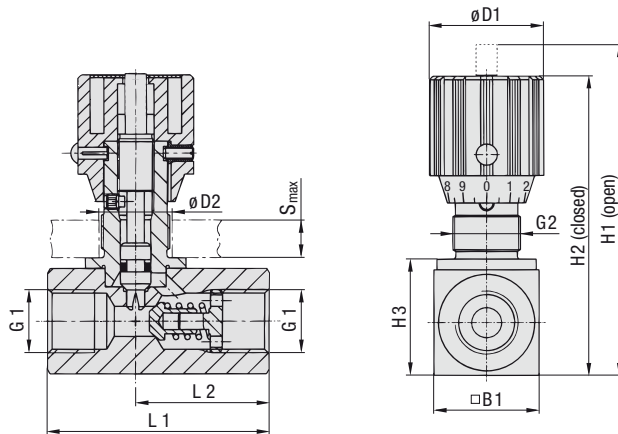
Female BSP threads (ISO 228) **B**
 Female NPT threads (ANSI B1.20.1) **N**
 Female UN/UNF thread (SAE J514) **S**

⑤ Panel Mounting Nut

Without panel mounting nut (standard option) **-**
 With panel mounting nut **PM**

⑥ Body / Spindle Material

Steel (standard option) **-**
 Stainless Steel **SS**

**Flow Control Valve - Type DRV
(In-Line Assembly)**

Dimensions

Type + Nominal Size	Thread Options G1	Dimensions (mm/in)										Weight (kg/lbs)
		G2	H1	H2	H3	B1	ØD1	ØD2	S (Max.)	L1	L2	
DRV-06	G1/8 BSP 1/8 NPT	PG 7	64	59	18	16	24	13	3	45	26	0,10
			2.52	2.32	.71	.63	.94	.51	.12	1.77	1.02	.22
DRV-08	G1/4 BSP 1/4 NPT 7/16-20UNF (1/4" SAE)	PG 11	83,5	77,5	27	25	29	19	7	55	34	0,30
			3.29	3.05	1.06	.98	1.14	.75	.28	2.17	1.32	.66
DRV-10	G3/8 BSP 3/8 NPT 9/16-18 UNF (3/4" SAE)	PG 11	90	83	32	30	29	19	7	65	41	0,45
			3.54	3.27	1.26	1.18	1.14	.75	.28	2.56	1.61	.99
DRV-12	G1/2 BSP 1/2 NPT 3/4-16 UNF (1/2" SAE)	PG 11	109,5	99,5	38	35	38	23	7	73	44	0,70
			4.31	3.92	1.50	1.38	1.50	.91	.28	2.87	1.73	1.54
DRV-16	G3/4 BSP 3/4 NPT 1-1/16-12 UN (3/4" SAE)	PG 16	128,5	118,5	48	45	38	23	7	88	57	1,26
			5.06	4.67	1.89	1.77	1.50	.91	.28	3.46	2.24	2.78
DRV-20	G1 BSP 1 NPT 1-5/16-12 UN (1" SAE)	PG 16	159	146	55	50	49	38	10	127	77	2,60
			6.26	5.75	2.17	1.97	1.93	1.50	.39	5.00	3.03	5.73
DRV-25	G1-1/4 BSP 1-1/4 NPT 1-5/8-12 UN (1-1/4" SAE)	PG 29	169	156	65	60	49	38	10	143	93	3,70
			6.65	6.14	2.56	2.36	1.93	1.50	.39	5.63	3.66	8.16
DRV-30	G1-1/2 BSP 1-1/2 NPT 1-7/8-12 UN (1-1/2" SAE)	PG 29	175	166	75	70	49	38	10	143	91	4,76
			6.89	6.54	2.95	2.76	1.93	1.50	.39	5.63	3.58	10.49
DRV-40	G2 BSP 2 NPT 2-1/2-12 UN (2" SAE)	PG 29	199	186	95	90	49	38	10	165	111	8,52
			7.83	7.32	3.74	3.54	1.93	1.50	.39	6.50	4.37	18.78

Characteristics

Throttle and shut-off the flow of liquid media in direction A-B (free flow in reverse direction)

Features

- Designed for in-line assembly with female BSP, NPT and SAE threaded connections
- Panel mounting nuts available on request
- Graduated turning knob and coded spindle to accurately control flow
- Set-screw located on side of turning knob to lock valve in position

Media Compatibility

- Suitable for hydraulic fluids

Please consult STAUFF before using with other media.

Materials

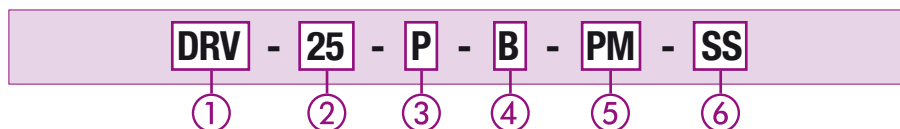
- Body and spindle made of Steel (1.0715), zinc/iron-plated (Fe/Zn Fe Co 8 C) and free of hexavalent chromium CrVI (standard option); Stainless Steel (1.4571) version available
- Turning knob made of Polyamide (PA)
- O-rings made of NBR (Buna-N®); FPM (Viton®) and EPDM sealed version available

Consult STAUFF for alternative materials.

Technical Data

- Opening pressure: 0,5 bar / 7 PSI (4,5 bar / 65 PSI available on request)
- Maximum working pressure: 350 bar / 5000 PSI (for all sizes)
- Operating temperature range: -20 °C ... +100 °C / -4 °F ... +212 °F

Please see page F76 for detailed flow characteristics.

Order Codes

1 Type

Flow Control Valve (In-Line Assembly) **DRV**

2 Nominal Size DN

06 08 10 12 16 20 25 30 40

3 Sealing Material

NBR (Buna-N®) (standard option) **P**
FPM (Viton®) **V**
EPDM **E**

4 Connection

Female BSP threads (ISO 228) **B**
Female NPT threads (ANSI B1.20.1) **N**
Female UN/UNF thread (SAE J514) **S**

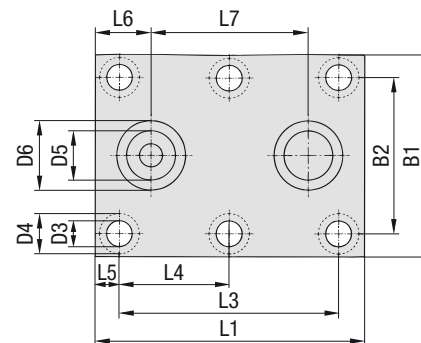
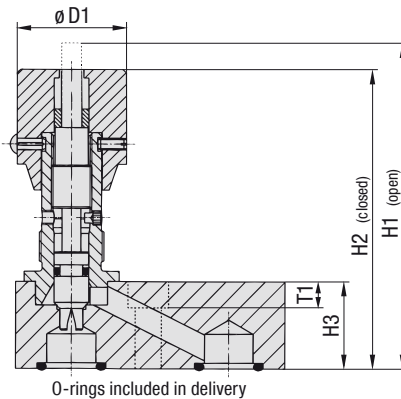
5 Panel Mounting Nut

Without panel mounting nut (standard option) **-**
With panel mounting nut **PM**

6 Body / Spindle Material

Steel (standard option) **-**
Stainless Steel **SS**

Throttle and Shut-Off Valve - Type DVP (Manifold Assembly)



Characteristics

Throttle and shut-off the flow of liquid media in both directions

Features

- Designed for manifold mounting
- Panel mounting nuts available on request
- Graduated turning knob and coded spindle to accurately control flow
- Set-screw located on side of turning knob to lock valve in position

Media Compatibility

- Suitable for hydraulic fluids

Please consult STAUFF before using with other media.

Materials

- Body and spindle made of Steel (1.0715), zinc/iron-plated (Fe/Zn Fe Co 8 C) and free of hexavalent chromium CrVI (standard option); Stainless Steel (1.4571) version available
- Turning knob made of Polyamide (PA)
- O-rings made of FPM (Viton®); NBR (Buna-N®) and EPDM sealed version available

Consult STAUFF for alternative materials.

Technical Data

- Maximum working pressure: 350 bar / 5000 PSI (for all sizes)
- Operating temperature range: -20°C ... +100°C / -4°F ... +212°F

Please see page F76 for detailed flow characteristics.

Recommended Bolts / Tightening Torques

- Socket cap screws according to ISO 4762 or ANSI / ASME B18.3 recommended for installation (not included in delivery):

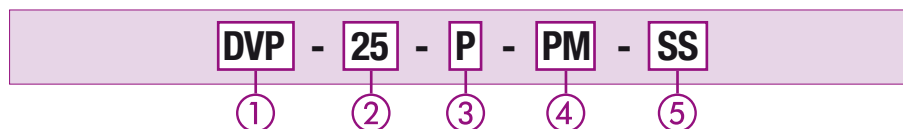
DVP-06	M6 x 20 - 8.8 (9 N-m) 1/4-20 UNC x 3/4 - Gr. 5 (10 ft-lb)
DVP-08	M6 x 25 - 8.8 (9 N-m) 1/4-20 UNC x 1 - Gr. 5 (10 ft-lb)
DVP-10	M6 x 30 - 10.9 (12 N-m) 1/4-20 UNC x 1-1/4 - Gr. 8 (12 ft-lb)
DVP-12	M6 x 30 - 12.9 (15 N-m) 1/4-20 UNC x 1-1/4 - Gr. 10 (14 ft-lb)
DVP-16	M8 x 35 - 10.9 (30 N-m) 5/16-18 UNC x 1-1/2 - Gr. 8 (24 ft-lb)
DVP-20	M8 x 50 - 12.9 (35 N-m) 5/16-18 UNC x 2 - Gr. 10 (29 ft-lb)
DVP-25	M10 x 50 - 12.9 (70 N-m) 3/8-16 UNC x 2 - Gr. 10 (58 ft-lb)
DVP-30	M12 x 60 - 10.9 (100 N-m) 7/16-14 UNC x 2-1/2 - Gr. 8 (63 ft-lb)

Dimensions

For panel mounting, please see dimensions G2, D2 and S (Max.) on page F68.

Type + Nom. Size	Dimensions (mm/in)																O-ring	Weight (kg/lbs)	
	ØD1	ØD3	ØD4	ØD5	ØD6	L1	L3	L4	L5	L6	L7	B1	B2	T1	H1	H2			H3
DVP-06	24	6,5	10,5	5	9,8	35	19		8	9,5	16	41,5	28,5	6,8	64	59	16	6,35 x 1,78	0,20
	.94	.26	.41	.20	.39	1.38	.75		.31	.37	.63	1.63	1.12	.27	2.52	2.32	.63		.44
DVP-08	29	6,5	10,5	7	12,4	47,5	35		6,5	11	25,5	46	33,5	6,8	79	72	20	8,5 x 2	0,40
	1.14	.26	.41	.28	.49	1.87	1.38		.26	.43	1.00	1.81	1.32	.27	3.11	2.83	.79		.88
DVP-10	29	6,5	10,5	10	15,7	51	33,5		8,5	12,7	25,5	51	38	6,8	84	78	25	12 x 2	0,60
	1.14	.26	.41	.39	.62	2.01	1.32		.33	.50	1.00	2.01	1.50	.27	3.31	3.07	.98		1.32
DVP-12	38	6,5	10,5	13	18,7	75	38		18,5	22,5	30	57,5	44,5	6,8	100	89	25	15 x 2	1,00
	1.50	.26	.41	.51	.74	2.95	1.50		.73	.89	1.18	2.26	1.75	.27	3.94	3.50	.98		2.20
DVP-16	38	8,5	13,5	17	23,9	93,5	76	38	8,5	19,5	54	70	54	9	113	103	30	19 x 2,5	1,50
	1.50	.33	.53	.67	.94	3.68	2.99	1.50	.33	.77	2.13	2.76	2.13	.35	4.45	4.06	1.18		3.31
DVP-20	49	8,5	13,5	22	30,5	111	95	47,5	8	27	57	76,5	60	9	154	142	45	25 x 3	3,40
	1.93	.33	.53	.87	1.20	4.37	3.74	1.87	.31	1.06	2.24	3.01	2.36	.35	6.06	5.59	1.77		7.50
DVP-25	49	10,5	16,5	28,5	37,5	143	120	60	11	32	79,5	100	76	11	154	142	45	32 x 3	5,15
	1.93	.41	.65	1.12	1.48	5.63	4.72	2.36	.43	1.26	3.13	3.94	2.99	.43	6.06	5.59	1.77		11.35
DVP-30	49	13	19	35	43,5	171	143	71,5	15	39	95	115	92	13	159	147	50	38 x 3	7,50
	1.93	.51	.75	1.38	1.71	6.73	5.63	2.81	.59	1.54	3.74	4.53	3.62	.51	6.26	5.79	1.97		16.53

Order Codes



① Type

Throttle and Shut-Off Valve (Manifold Assembly) **DVP**

② Nominal Size DN

06 08 10 16 20 25 30

③ Sealing Material

FPM (Viton®) (standard option) **V**
 NBR (Buna-N®) **P**
 EPDM **E**

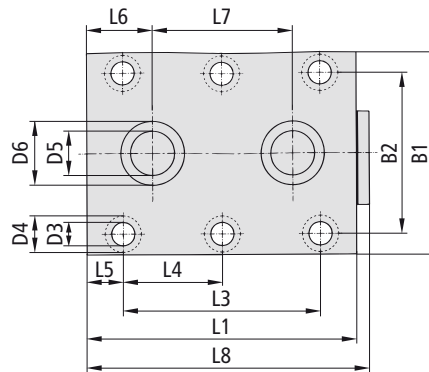
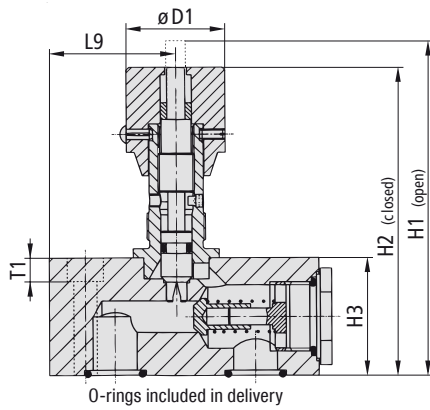
④ Panel Mounting Nut

Without panel mounting nut (standard option) **-**
 With panel mounting nut **PM**

⑤ Body / Spindle Material

Steel (standard option) **-**
 Stainless Steel **SS**

Flow Control Valve - Type DRVP (Manifold Assembly)



Dimensions

For panel mounting, please see dimensions G2, D2 and S (Max.) on page F69.

Type + Nom. Size	Dimensions (mm/in)																			O-ring	Weight (kg/lbs)
	ØD1	ØD3	ØD4	ØD5	ØD6	L1	L3	L4	L5	L6	L7	L8	L9	B1	B2	T1	H1	H2	H3		
DRVP-06	24	6,5	10,5	5	9,8	41,5	19		6,4	8	16	47	13,5	41,5	28,5	6,8	64	59	16	6,35 x 1,78	0,26
	.94	.26	.41	.20	.39	1.63	.75		.25	.31	.63	1.85	.53	1.63	1.12	.27	2.52	2.32	.63		.57
DRVP-08	29	6,5	10,5	7	12,4	63,5	35		14,2	18,7	25,5	70	31	46	33,5	6,8	79	72	20	8,5 x 2	0,50
	1.14	.26	.41	.28	.49	2.50	1.38		.56	.74	1.00	2.76	1.22	1.81	1.32	.27	3.11	2.83	.79		1.10
DRVP-10	29	6,5	10,5	10	15,7	70	33,5		18	22,0	25,5	75	29,5	51	38	6,8	84	78	25	12 x 2	0,80
	1.14	.26	.41	.39	.62	2.76	1.32		.71	.87	1.00	2.95	1.16	2.01	1.50	.27	3.31	3.07	.98		1.76
DRVP-12	38	6,5	10,5	13	18,7	80	38		21	25,0	30	86	36,5	57,5	44,5	6,8	107	96	32	15 x 2	1,20
	1.50	.26	.41	.51	.74	3.15	1.50		.83	.98	1.18	3.39	1.44	2.26	1.75	.27	4.21	3.78	1.26		2.65
DRVP-16	38	8,5	13,5	17	23,9	104	76	38	14	25,4	54	110	49	70	54	9	128	118	45	19 x 2,5	2,50
	1.50	.33	.53	.67	.94	4.09	2.99	1.50	.55	1.00	2.13	4.33	1.93	2.76	2.13	.35	5.04	4.65	1.77		5.51
DRVP-20	49	8,5	13,5	22	30,5	127	95	47,5	16	35	57	133	49	76,5	60	9	159	147	50	25 x 3	3,90
	1.93	.33	.53	.87	1.20	5.00	3.74	1.87	.63	1.38	2.24	5.24	1.93	3.01	2.36	.35	6.26	5.79	1.97		8.60
DRVP-25	49	10,5	16,5	28,5	37,5	165	120	60	15	35,6	79,5	171	77	100	76	11	164	152	55	32 x 3	6,70
	1.93	.41	.65	1.12	1.48	6.50	4.72	2.36	.59	1.40	3.13	6.73	3.03	3.94	2.99	.43	6.46	5.98	2.17		14.77
DRVP-30	49	13	19	35	43,5	186	143	71,5	15	38,8	95	192	85	115	92	13	184	172	75	38 x 3	11,00
	1.93	.51	.75	1.38	1.71	7.32	5.63	2.81	.59	1.53	3.74	7.56	3.35	4.53	3.62	.51	7.24	6.77	2.95		24.25
DRVP-40	49	13	19	47,5	57,5	192	133,5	67,5	16	41,5	89	197	64	140	111	13	209	197	100	52 x 3	18,80
	1.93	.51	.75	1.87	2.26	7.56	5.25	2.66	.63	1.63	3.50	7.76	2.52	5.51	4.37	.51	8.23	7.76	3.94		41.45

Characteristics

Throttle and shut-off the flow of liquid media in direction A-B (free flow in reverse direction)

Features

- Designed for manifold mounting
- Panel mounting nuts available on request
- Graduated turning knob and coded spindle to accurately control flow
- Set-screw located on side of turning knob to lock valve in position

Media Compatibility

- Suitable for hydraulic fluids

Please consult STAUFF before using with other media.

Materials

- Body and spindle made of Steel (1.0715), zinc/iron-plated (Fe/Zn Fe Co 8 C) and free of hexavalent chromium CrVI (standard option); Stainless Steel (1.4571) version available
- Turning knob made of Polyamide (PA)
- O-rings made of FPM (Viton®); NBR (Buna-N®) and EPDM sealed version available

Consult STAUFF for alternative materials.

Technical Data

- Opening pressure: 0,5 bar / 7 PSI (4,5 bar / 65 PSI available on request)
- Maximum working pressure: 350 bar / 5000 PSI (for all sizes)
- Operating temperature range: -20 °C ... +100 °C / -4 °F ... +212 °F

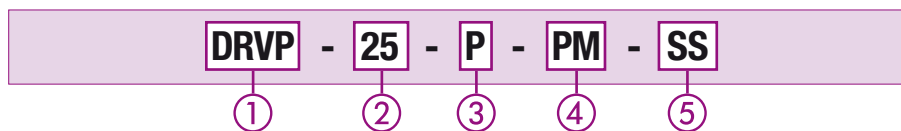
Please see page F76 for detailed flow characteristics.

Recommended Bolts / Tightening Torques

- Socket cap screws according to ISO 4762 or ANSI / ASME B18.3 recommended for installation (not included in delivery):

DRVP-06	M6 x 20 - 8.8 (9 N-m) 1/4-20 UNC x 3/4 - Gr. 5 (10 ft-lb)
DRVP-08	M6 x 25 - 8.8 (9 N-m) 1/4-20 UNC x 1 - Gr. 5 (10 ft-lb)
DRVP-10	M6 x 30 - 10.9 (12 N-m) 1/4-20 UNC x 1-1/4 - Gr. 8 (12 ft-lb)
DRVP-12	M6 x 35 - 12.9 (15 N-m) 1/4-20 UNC x 1-1/2 - Gr. 10 (14 ft-lb)
DRVP-16	M8 x 50 - 10.9 (30 N-m) 5/16-18 UNC x 2 - Gr. 8 (24 ft-lb)
DRVP-20	M8 x 55 - 12.9 (35 N-m) 5/16-18 UNC x 2-1/4 - Gr. 10 (29 ft-lb)
DRVP-25	M10 x 60 - 12.9 (70 N-m) 3/8-16 UNC x 2-1/2 - Gr. 10 (58 ft-lb)
DRVP-30	M12 x 85 - 10.9 (100 N-m) 7/16-14 x 3-1/2 - Gr. 8 (63 ft-lb)
DRVP-40	M12 x 100 - 12.9 (130 N-m) 7/16-14 x 4 - Gr. 10 (70 ft-lb)

Order Codes



① Type

Flow Control Valve (Manifold Assembly) **DRVP**

② Nominal Size DN

06 08 10 12 16 20 25 30 40

③ Sealing Material

FPM (Viton®) (standard option) **V**
NBR (Buna-N®) **P**
EPDM **E**

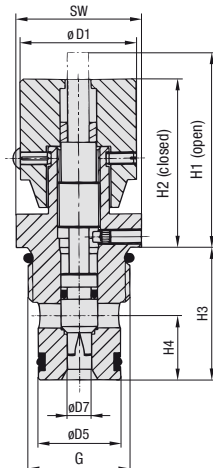
④ Panel Mounting Nut

Without panel mounting nut (standard option) **-**
With panel mounting nut **PM**

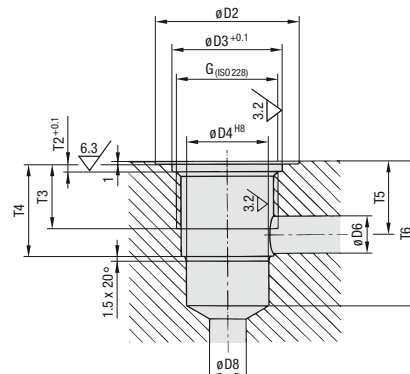
⑤ Body / Spindle Material

Steel (standard option) **-**
Stainless Steel **SS**

Throttle and Shut-Off Valve - Type DVE (Cartridge Assembly)



Installation Details



Characteristics

Throttle and shut-off the flow of liquid media in both directions

Features

- Designed for direct installation into hydraulic manifolds with male BSP threaded stud
- Graduated turning knob and coded spindle to accurately control flow
- Set-screw located on side of turning knob to lock valve in position

Media Compatibility

- Suitable for hydraulic fluids

Please consult STAUFF before using with other media.

Materials

- Body and spindle made of Steel (1.0715), zinc/iron-plated (Fe/Zn Fe Co 8 C) and free of hexavalent chromium CrVI (standard option); Stainless Steel (1.4571) version available
- Turning knob made of Polyamide (PA)
- O-rings made of NBR (Buna-N®); FPM (Viton®) and EPDM sealed version available

Consult STAUFF for alternative materials.

Technical Data

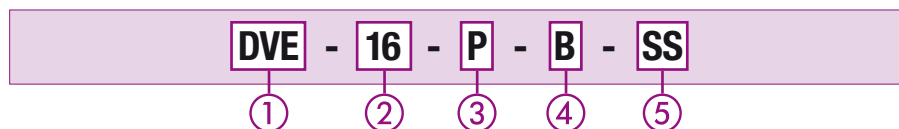
- Maximum working pressure: 350 bar / 5000 PSI (for all sizes)
- Operating temperature range: -20°C ... +100°C / -4°F ... +212°F

Please see page F76 for detailed flow characteristics.

Dimensions

Type + Nom. Size	Thread Options G	Dimensions (mm/in)																Weight (kg/lbs)		
		H1	H2	H3	H4	ØD1	ØD2	ØD3	ØD4	ØD5	ØD6	ØD7	ØD8	SW	T2	T3	T4		T5	T6
DVE-08	G1/2BSP	47	41	28	12,0	29	32	24	14	14	5	5	5	27	1,9	14	17,5	15	29	0,15
		1,85	1,61	1,08	.47	1,14	1,26	.94	.55	.55	.20	.20	.20	1,06	.07	.55	.69	.59	1,14	.33
DVE-10	G1/2BSP	64	54	31	14,5	38	32	24	16	16	8	6	8	27	1,9	14	20,5	17	33	0,25
		2,52	2,13	1,21	.57	1,50	1,26	.94	.63	.63	.31	.24	.31	1,06	.07	.55	.81	.67	1,30	.55
DVE-12	G3/4BSP	65	55	40	17,5	38	37	30	19	19	10	8	10	32	1,9	21	29,0	24	43	0,50
		2,56	2,17	1,57	.69	1,50	1,46	1,18	.75	.75	.39	.31	.39	1,26	.07	.83	1,14	.94	1,69	1,10
DVE-16	G1 BSP	65	55	44	21,1	38	47	36	27	27	12	8	12	41	1,9	21	30,0	24	47	0,70
		2,56	2,17	1,71	.83	1,50	1,85	1,42	1,06	1,06	.47	.31	.47	1,61	.07	.83	1,18	.94	1,85	1,54

Order Codes



① Type

Throttle and Shut-Off Valve (Cartridge Assembly) **DVE**

② Nominal Size DN

08 **10** **12** **16**

③ Sealing Material

NBR (Buna-N®) (standard option) **P**
 FPM (Viton®) **V**
 EPDM **E**

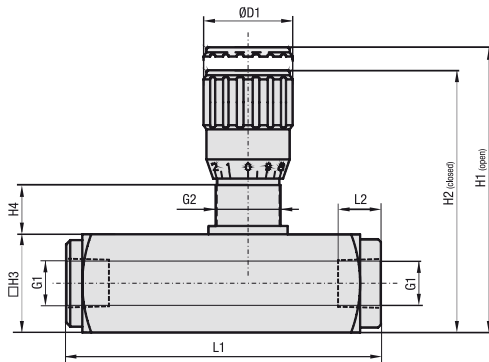
④ Connection

Male BSP thread (ISO 228) **B**

⑤ Body / Spindle Material

Steel (standard option) **-**
 Stainless Steel **SS**

Pressure Compensated Flow Control Valve - Type PNDRV (In-Line Assembly)

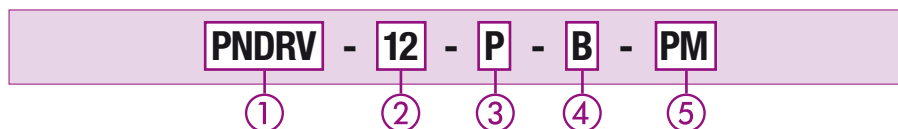


Dimensions

Type + Nominal Size	Thread Options G1	Dimensions (mm/in)							Weight (kg/lbs)
		L1	L2	H1	H2	H3	H4	G2	
PNDRV-08	G1/4 BSP	94	12,5	88,5	81,5	30	15	M20 x 1	0,58
	1/4 NPT								
	7/16-20 UNF (1/4" SAE)	3,70	.49	3,48	3,21	1,18	.59		.77
PNDRV-10	G3/8 BSP	110,5	13	103	94,5	35	17	M25 x 1,5	0,94
	3/8 NPT								
	9/16-18 UNF (3/4" SAE)	4,35	.51	4,06	3,72	1,38	.67		2,09
PNDRV-12	G1/2 BSP	137	15,5	122	112	45	18	M30 x 1,5*	1,83
	1/2 NPT								
	3/4-16 UNF (1/2" SAE)	5,39	.61	4,80	4,41	1,77	.71		4,07
PNDRV-16	3/4 NPT	163	17	150	138	55	24	M40 x 1,5	3,35
	G3/4 BSP								
	1-1/16-12 UN (3/4" SAE)	6,42	.67	5,91	5,43	2,17	.94		7,44

* M25 x 1,5 for version with female UN/UNF thread (SAE J514)

Order Codes



① Type

Pressure Compensated Flow Control Valve (In-Line Assembly) **PNDRV**

② Nominal Size DN

08 10 12 16

③ Sealing Material

NBR (Buna-N®) (standard option) **P**
 FPM (Viton®) **V**
 EPDM **E**

④ Connection

Female BSP thread (ISO 228) **B**
 Female NPT thread (ANSI B1.20.1) **N**
 Female UN/UNF thread (SAE J514) **S**

⑤ Panel Mounting Nut

Without panel mounting nut (standard option) **-**
 With panel mounting nut **PM**

Characteristics

Throttle and shut-off the flow of liquid media in direction A-B (free flow in reverse direction) with pressure compensating feature via built-in compensating piston

Features

- Designed for in-line assembly with female BSP, NPT and SAE threaded connections
- Panel mounting nuts available on request
- Graduated turning knob to accurately control flow
- Set-screw located on side of turning knob to lock valve in position

Media Compatibility

- Suitable for hydraulic fluids

Please consult STAUFF before using with other media.

Materials

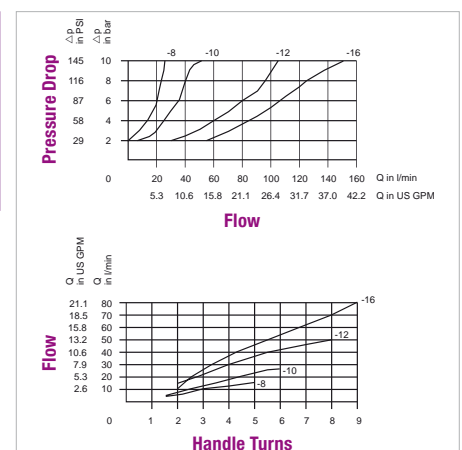
- Body made of Steel, phosphated
- Internal components made of Stainless Steel
- Turning knob made of Aluminium
- O-rings made of NBR (Buna-N®)
- Anti-extrusion ring made of PTFE

Consult STAUFF for alternative materials.

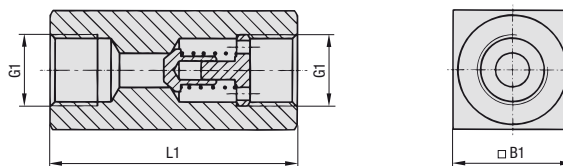
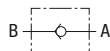
Technical Data

- Maximum working pressure: 210 bar / 3000 PSI (for all sizes)
- Operating temperature range: -20 °C ... +120 °C / -4 °F ... +248 °F
- Minimum filtration grade: 25 µm (absolute) to ensure the correct functioning, reduce wear and tear and increase the service life of the valve

Flow Characteristics



Heavy-Duty Check Valve - Type RV (In-Line Assembly)



Characteristics

Allows a single-directional flow only

Features

- Designed for in-line assembly with female BSP, NPT and SAE threaded connections
- Metal-to-metal seat

Media Compatibility

- Suitable for hydraulic fluids

Please consult STAUFF before using with other media.

Materials

- Body made of Steel (1.0715), zinc/iron-plated (Fe/Zn Fe Co 8 C) and free of hexavalent chromium CrVI (standard option); Stainless Steel (1.4571) version available

Technical Data

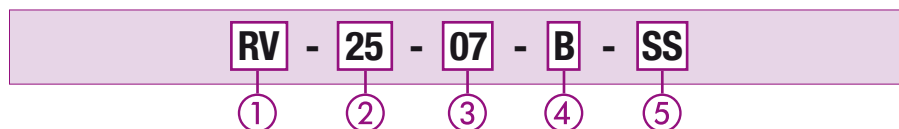
- Opening pressure: 0,5 bar / 7 PSI (4,5 bar / 65 PSI available on request)
- Maximum working pressure: 500 bar / 7250 PSI (depending on size)
- Operating temperature range: -20°C ... +100°C / -4°F ... +212°F

Please see page F76 for detailed flow characteristics.

Dimensions

Type + Nominal Size	Thread Options G1	Dimensions (mm/in)		Working Pressure PN (bar/PSI)	Weight (kg/lbs)
		L1	B1		
RV-06	G1/8 BSP 1/8 NPT	45	16	500	0,10
		1.77	.63	7250	.22
RV-08	G1/4 BSP 1/4 NPT 7/16-20 UNF (1/4" SAE)	55	25	500	0,20
		2.17	.98	7250	.44
RV-10	G3/8 BSP 3/8 NPT 9/16-18 UNF (3/4" SAE)	65	30	500	0,40
		2.56	1.18	7250	.88
RV-12	G1/2 BSP 1/2 NPT 3/4-16 UNF (1/2" SAE)	73	35	500	0,70
		2.87	1.38	7250	1.54
RV-16	G3/4 BSP 3/4 NPT 1-1/16-12 UN (3/4" SAE)	88	45	500	1,20
		3.46	1.77	7250	2.64
RV-20	G1 BSP 1 NPT 1-5/16-12 UN (1" SAE)	127	50	500	2,00
		5.00	1.97	7250	4.40
RV-25	G1-1/4 BSP 1-1/4 NPT 1-5/8-12 UN (1-1/4" SAE)	143	60	400	3,30
		5.63	2.36	5800	7.26
RV-30	G1-1/2 BSP 1-1/2 NPT 1-7/8-12 UN (1-1/2" SAE)	143	70	315	4,20
		5.63	2.75	4500	9.24
RV-40	G2 BSP 2 NPT 2-1/2-12 UN (2" SAE)	165	90	315	7,20
		6.49	3.54	4500	15.84

Order Codes



① Type

Heavy-Duty Check Valve (In-Line Assembly) **RV**

② Nominal Size DN

06 08 10 12 16 20 25 30 40

③ Opening Pressure

0,5 bar / 7 PSI (standard option) **07**
4,5 bar / 65 PSI **65**

Consult STAUFF for alternative opening pressures.

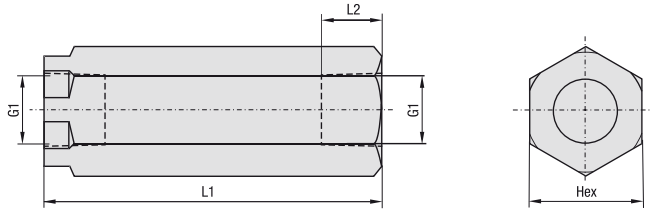
④ Connection

Female BSP thread (ISO 228) **B**
Female NPT thread (ANSI B1.20.1) **N**
Female UN/UNF thread (SAE J514) **S**

⑤ Body Material

Steel (standard option) **-**
Stainless Steel **SS**

Medium-Duty Check Valve - Type RVM (In-Line Assembly)



Dimensions

Type + Nominal Size	Thread Options G1	Dimensions (mm/in)			Working Pressure PN (bar/PSI)	Weight (kg/lbs)
		L1	L2	Hex		
RVM-08	G1/4 BSP 1/4 NPT	63,0	12,5	22	400	0,17
		2.48	.49	.87	5800	.38
RVM-10	G3/8 BSP 3/8 NPT	69,0	12,5	27	400	0,26
		2.72	.49	1.06	5800	.58
RVM-12	G1/2 BSP 1/2 NPT	80,5	15,5	32	400	0,42
		3.17	.61	1.26	5800	.93
RVM-16	G3/4 BSP 3/4 NPT	99,5	17,0	36	400	0,61
		3.92	.67	1.42	5800	1.36

Characteristics

Allows a single-directional flow only

Features

- Designed for in-line assembly with female BSP and NPT threaded connections
- Ideal for medium-duty applications
- Metal-to-metal seat

Media Compatibility

- Suitable for hydraulic fluids

Please consult STAUFF before using with other media.

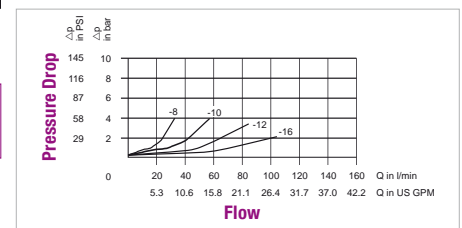
Materials

- Body made of Steel, zinc/nickel-coated (free of hexavalent chromium CrVI)
- Ball made of Stainless Steel

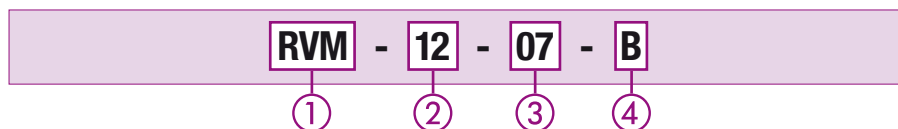
Technical Data

- Opening pressure: 0,5 bar / 7 PSI
- Field replaceable springs with a pressure setting of 2 bar / 30 PSI or 4 bar / 60 PSI
- Maximum working pressure: 400 bar / 5800 PSI (for all sizes)
- Operating temperature range: -20 °C ... +100 °C / -4 °F ... +212 °F

Flow Characteristics



Order Codes



① Type

Medium-Duty Check Valve (In-Line Assembly) **RVM**

② Nominal Size DN

08 **10** **12** **16**

③ Opening Pressure

0,5 bar / 7 PSI (standard option) **07**
 2 bar / 30 PSI **30**
 4 bar / 60 PSI **60**

Consult STAUFF for alternative opening pressures.

④ Connection

Female BSP thread (ISO 228) **B**
 Female NPT thread (ANSI B1.20.1) **N**

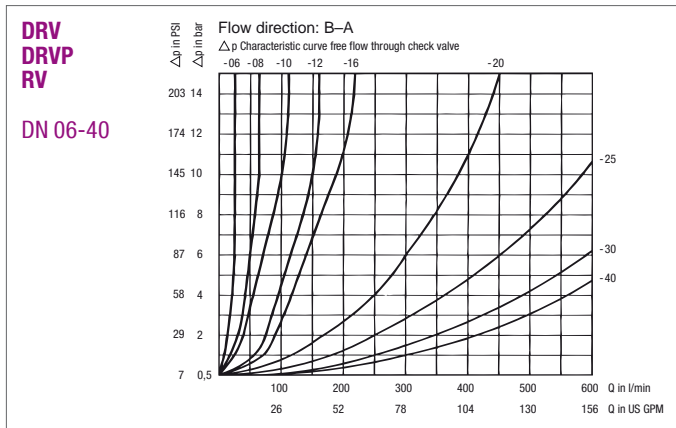
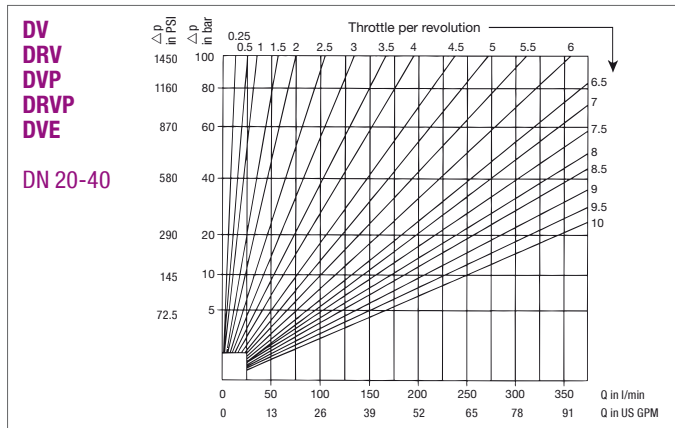
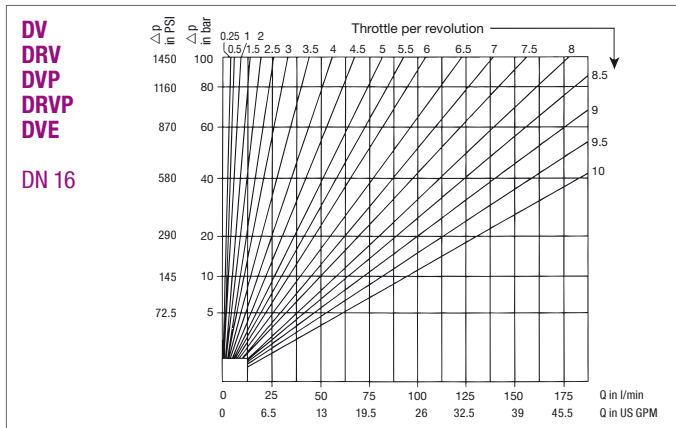
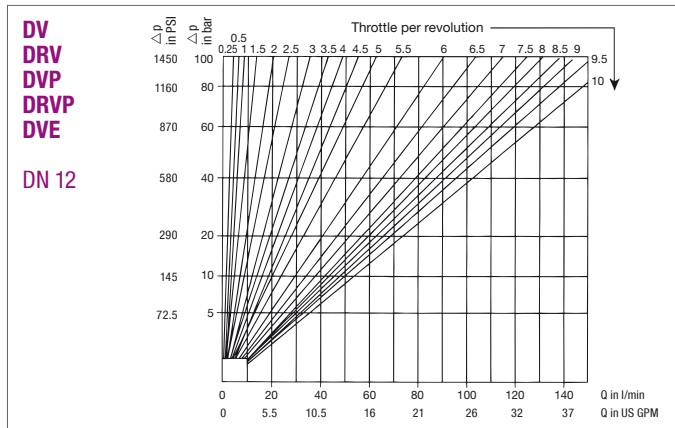
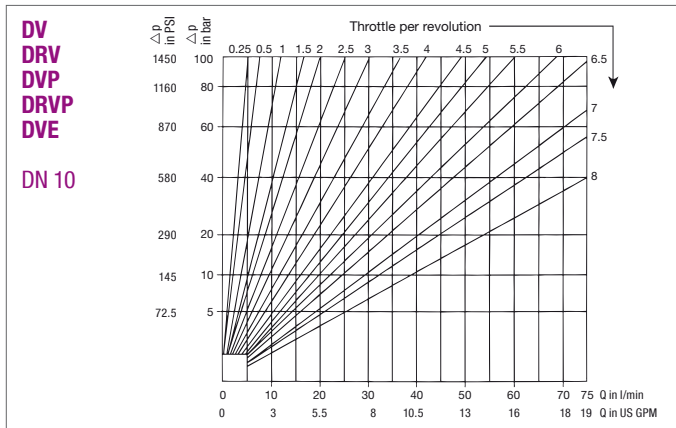
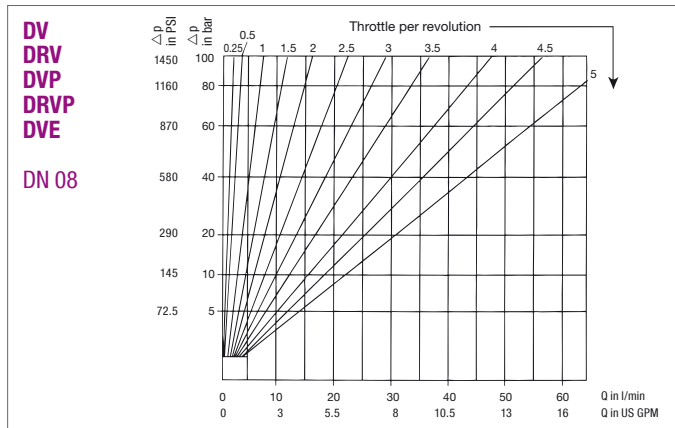
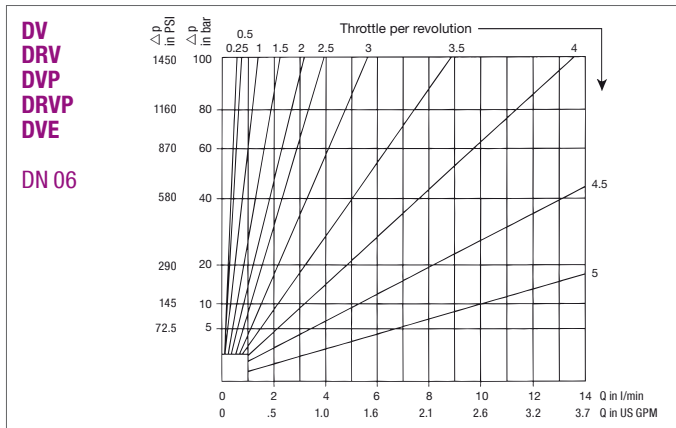
Accessories / Spare Parts

Field replaceable springs

- for RVM-08 (setting of 2 bar / 30 PSI): **RVM-08-30**
- for RVM-08 (setting of 4 bar / 60 PSI): **RVM-08-60**
- for RVM-10 (setting of 2 bar / 30 PSI): **RVM-10-30**
- for RVM-10 (setting of 4 bar / 60 PSI): **RVM-10-60**
- for RVM-12 (setting of 2 bar / 30 PSI): **RVM-12-30**
- for RVM-12 (setting of 4 bar / 60 PSI): **RVM-12-60**
- for RVM-16 (setting of 2 bar / 30 PSI): **RVM-16-30**
- for RVM-16 (setting of 4 bar / 60 PSI): **RVM-16-60**

Consult STAUFF for alternative pressure settings.

Nominal Flow Rate vs. Pressure Drop



Please note: The flow characteristics mentioned on this page are valid for mineral oils with a density of 0,86 kg/dm³ and the kinematic viscosity of 35 mm²/s (35 cSt). The characteristics have been determined in accordance to ISO 3968.