

RKP-II

RADIAL PISTON PUMP

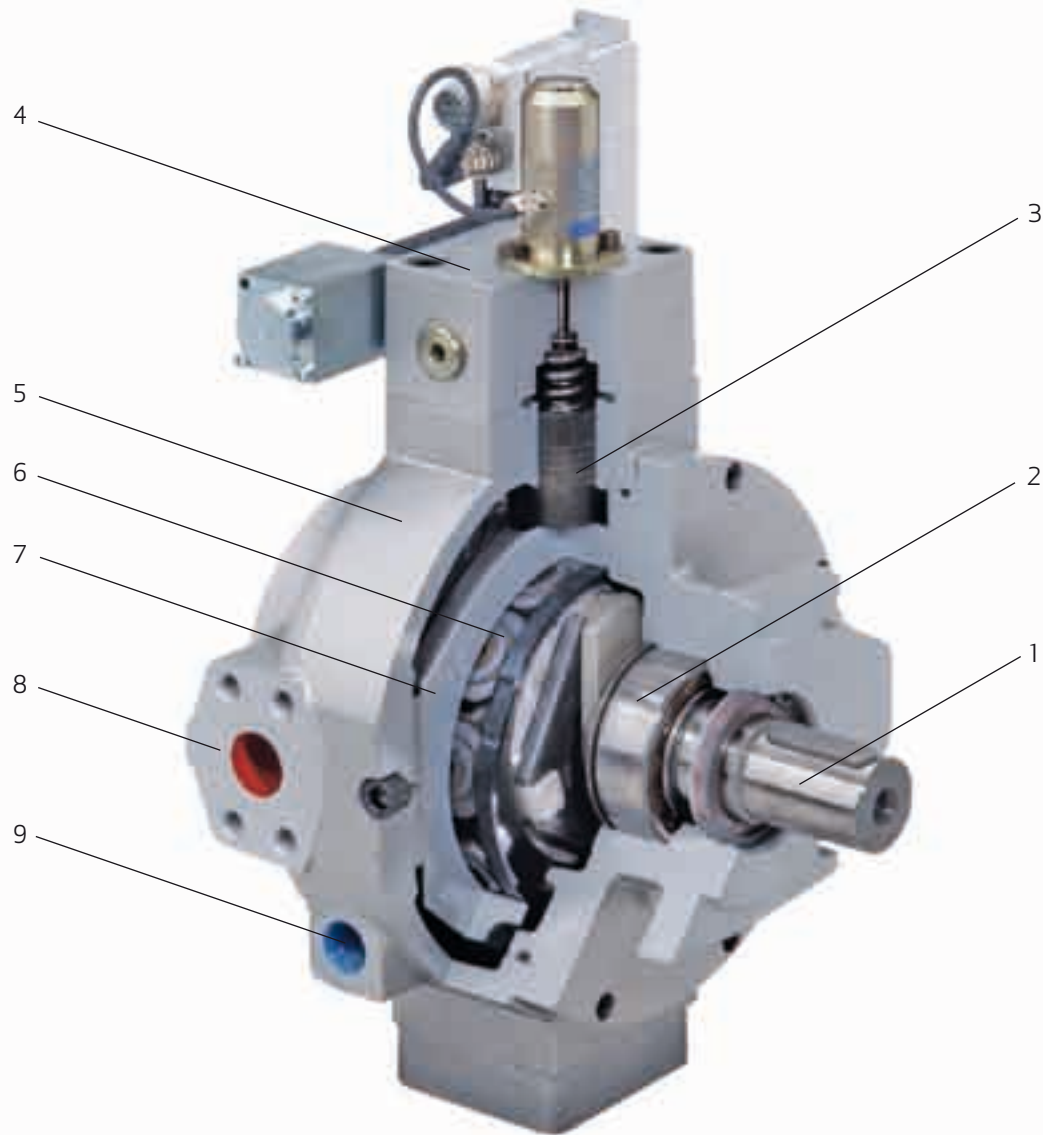


Rev. 2, 05/2009

MOOG RKP PUMPS OFFER LOW NOISE, UNSURPASSED
RELIABILITY, LONG LIFE, AND A WIDE VARIETY OF
CONTROL OPTIONS FOR DEMANDING APPLICATIONS

RADIAL PISTON PUMPS RKP-II

CROSS SECTION RKP-II



- 1 Drive shaft
- 2 Roller bearing
- 3 Control piston
- 4 Compensator
- 5 Housing
- 6 Slipper pads
- 7 Sliding stroke ring
- 8 SAE connection
- 9 Drain port

RADIAL PISTON PUMPS RKP-II

TABLE OF CONTENTS

TABLE OF CONTENTS

Cross section	2
Table of contents	3
Introduction	4
New design	5
Technical data	6
Performance curves	7
Compensator options	10
Multiple arrangements	11
Model code	16
Technical information	19
Appendix A – Compensator options	20
Appendix B – Technical drawings	32
Worldwide Support	59

IMPORTANT NOTE

This catalog is intended for users with some technical knowledge. To ensure that all necessary characteristics for function and safety are covered, the user must check the suitability of the products described herein. The products are subject to change without notice. In case of doubt, please contact Moog.

Moog is a registered trademark of Moog Inc. and its subsidiaries. Unless expressly indicated, all trademarks indicated herein are the property of Moog Inc. and its subsidiaries. For a complete disclaimer, please go to www.moog.com/literature/disclaimers.

© Moog Inc. 2009. All rights reserved.
All changes are reserved.

For the most up to date information please visit our website www.moog.com/industrial/RKPHighPerformance.

RADIAL PISTON PUMPS RKP-II

INTRODUCTION

GENERAL INFORMATION

Outstanding motion control solutions

For over 50 years, we have been a leader in motion control technology, specialising in the manufacture and application of high performance products. Today, we incorporate the latest motion control technology into our products and offer innovative ideas that can help our customers achieve new levels of machine performance.

Proven pump technology

The Radial Piston Pump product line (also known as RKP), is a range of high performance variable displacement pumps intended for use in industrial applications. Based on a proven concept, the RKP's robust and contamination resistant design results in long life and a high degree of reliability. Its rapid response time and high volumetric efficiency have led to it being the first choice for many machines with demanding flow and pressure control needs.

We produce a wide range of radial piston pumps of different sizes, single and multiple arrangements, with various forms of control (mechanical, hydro-mechanical, electro-hydraulic, digital and analogue) in order to provide maximum flexibility to machine builders.

Applications

Thanks to the flexible, high performance design, the new RKP-II is the ideal solution for all types of industrial applications. The RKP is already used in machines for injection molding, die casting, forming equipment such as presses and rolls, as well as in general hydraulic applications. In the field of plastic and metal processing, the RKP is used on equipment to produce plastic and metal parts, for the packaging and automotive industries. The RKP is also used in test equipment, construction, rubber processing, and the mining industry.

The new RKP-II is particularly well suited to applications where power, low noise and robust design, in combination with precision and speed are needed.

Low-noise and rugged design

With a number of innovative design features we have been able to reduce both the primary and the secondary noise level from the RKP-II. For sizes 32, 63 and 80 cm³/rev, the number of pistons have been increased from 7 to 9, reducing the working piston diameter leading to lower dynamic transverse forces acting on the housing.

As a result the flow and pressure pulsations on the high pressure side have been reduced, enabling the RKP-II to help machine manufacturers comply with EU directive "2003/10/EC" on noise emissions.

The new design minimizes wear on the internal pump components, even under the most demanding operating conditions, thereby extending the service life of the machine.

Digital or analogue control

The control technology of the RKP-II pump has been significantly improved with a new integral closed-loop proportional valve, with digital on-board electronics for flow and pressure regulation, tuning, and diagnostics.

The RKP-II can be digitally controlled via a CANopen interface or controlled by analogue command signals.

Details of the significant benefits available from running the RKP in either CANopen or analog modes are outlined in a separate catalogue for the RKP-D pump.

RADIAL PISTON PUMPS RKP-II

NEW DESIGN

NEW DESIGN

The new generation of RKP pumps, the RKP-II, benefits from reduced noise levels. They are now fitted with a sliding stroke ring and the suction flow path has been modified and increased in size preventing cavitation within the pump.

RKP-II stands for reliability, low noise, and durability and this is underlined by its extended warranty. Under the conditions described on page 6, warranty for mineral oil is covered for 10,000 operating hours or 24 months

Further advantages of the Moog radial piston pump RKP-II are:

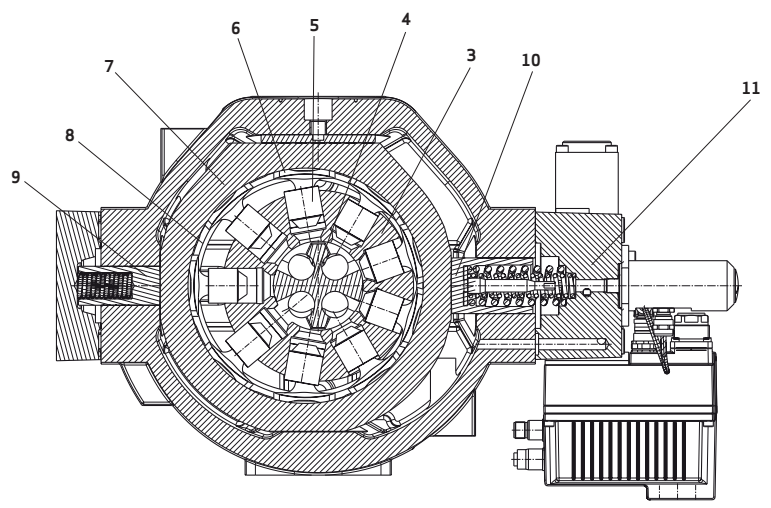
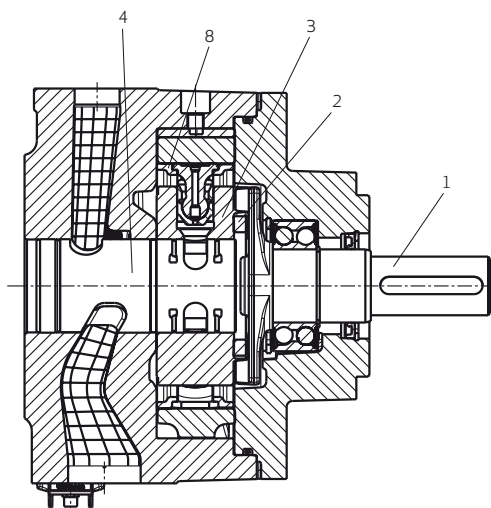
- Fast response
- Compact modular design enabling the pump selection to match the application
- Good suction characteristics
- Low pressure ripple

The following RKP-II features are available:

- Medium pressure series (280 bar) and high pressure series (350 bar) for mineral oil
- Large selection of compensators including mechanical, hydraulic and electro-hydraulic (analog or digital with CAN bus)
- Mechanical flow limitation
- Multiple pumps by tandem mounting
- Various drive flanges
- Suitable for most hydraulic oils such as mineral oil, transmission oil, biodegradable oil and synthetic esters (HFD)
- Suitable pump versions are also available for special fluids such as oil in water emulsions, (HFA and HFB), water-glycol (HFC), lubricating oils and cutting emulsions. See the special fluids range of catalogues for details of these pumps.

Mode of operation

The shaft (1) transfers the drive torque to the star-shaped cylinder block (3), free of any axial forces, via a crossdisc coupling (2). The cylinder block is hydrostatically supported on the control journal (4). The radial pistons (5) in the cylinder block run against the stroke ring (7) through hydrostatically balanced slipper pads (6). The pistons and slipper pads are joined by ball and socket joints and locking rings. The slipper pads are guided in the stroke ring by two retaining rings (8) and, when running, are held against the stroke ring by centrifugal force and oil pressure. As the cylinder block rotates, the pistons reciprocate due to the eccentric positioning of the stroke ring, the piston stroke being twice the eccentricity. The eccentric position of the stroke ring is controlled by two diametrically opposed control pistons (9, 10) and the pressure compensator (11). The oil flow to and from the pump passes through the pump ports and into and out of the pistons through the porting in the control journal. The bearing supporting the drive shaft is only subjected to external forces. The compensator setting limits the system pressure and adjusts the pump flow between zero and full flow to maintain the set pressure.



RADIAL PISTON PUMPS RKP-II

TECHNICAL DATA

Parameters								
Displacement [cm³/rev]		19	32	45	63	80	100	140
Type of construction		Pump for open circuit with various control devices						
Type of mounting		End mounting, centering and hole-circle dia. to DIN/ISO 3019/2 (metric) Mounting flange to DIN/ISO 3019/1 (inch) Mounting flange to DIN/ISO 3019/2 (metric)						
Mounting position		Optional						
Weight [kg]		22	33	33	71	71	71	105
Mass moment of inertia [kgcm²]		17.7	61.0	61.0	186.3	186.3	186.3	380.0
Line connections according to ISO 6162: Medium pressure series 280 bar (4000psi) Pressure port		SAE 3/4" 3000 psi	SAE 1" 3000 psi	SAE 1" 3000 psi	SAE 1 1/4" 3000 psi	SAE 1 1/4" 3000 psi	SAE 1 1/4" 6000 psi	SAE 1 1/2" 6000 psi
Suction port		SAE 3/4" 3000 psi	SAE 1 1/2" 3000 psi	SAE 1 1/2" 3000 psi	SAE 2" 3000 psi	SAE 2" 3000 psi	SAE 2 " 3000 psi	SAE 2 1/2 " 3000 psi
High pressure series 350 bar (5000 psi) Pressure port		SAE 3/4" 6000 psi	SAE 1" 6000 psi		SAE 1 1/4" 6000 psi	SAE 1 1/4" 6000 psi		
Suction port		SAE 3/4" 6000 psi	SAE 1 1/2" 3000 psi		SAE 2" 3000 psi	SAE 2" 3000 psi		
Recommended pipe OD for drain lines (lightweight version) [mm]		15 (5/8")	18 (3/4")	18 (3/4")	22 (7/8")	22 (7/8")	22 (7/8")	22 (7/8")
Drain		The drain line is to be routed so that the pump housing is always full of the pumped fluid. The pressure at the drain port must not exceed 1 bar gauge pressure (2 bar absolute). The drain line to be piped directly to tank without filter, cooler, check valve etc. and must terminate below the minimum fluid level.						
Type of drive		Direct drive with coupling (please inquire from your Moog contact for other types)						
Ambient temperature range		-15 °C to +60 °C						
Max. speed at inlet pressure 0.8 bar abs. [min ⁻¹] 1 bar abs. [min ⁻¹]		2700 2900	2500 2900	1800 2100	2100 2300	1500 1800	1500 1800	1500 1800
Max speed for quiet running [min ⁻¹]		1800	1800	1800	1800	1800	1800	1800
Min. inlet pressure suction connection		0.8 bar absolute						
Max. housing pressure		2 bar (1 bar gauge pressure)						
Medium pressure series	Continuous pressure	280	280	280	280	280	280	280
	max. pressure ¹⁾ [bar]	315	315	315	315	315	315	315
	Pressure peak	350	350	350	350	350	350	350
High pressure series	Continuous pressure	350	350		350	350		
	max. pressure ¹⁾ [bar]	385	385		385	385		
	Pressure peak	420	420		420	420		
Hydraulic fluid		Mineral oil to DIN 51 524						
Hydraulic fluid temperature range		-15 °C to +80 °C						
Viscosity		Allowable operational range 12 mm²/s to 100 mm²/s (cSt); recommended 16 mm²/s to 46 mm²/s (cSt) Hydraulic fluid according to viscosity class ISO VG 46 or VG 32 Max. viscosity 500 mm²/s during start-up with electric motor at 1800 min ⁻¹						
Filtering		NAS 1638, class 9; ISO/DIN 4406, class 20/18/15; obtained with filter fineness of β 20 = 75 ²⁾ NAS 1638, class 7; ISO/DIN 4406, class 18/16/13; with elektro-hydraulic control (RKP-D)						

For special fluids e.g., HFA, HFC and emulsions the above pressure, viscosity and filtration parameters may be changed.

See the relevant special fluids catalogue for details.

¹⁾ Max. pressure to DIN 24 312

²⁾ Dirt particles retention rate > 20 µm is 1: 75, i.e. 98,67 %

1000 psi = 70 bar

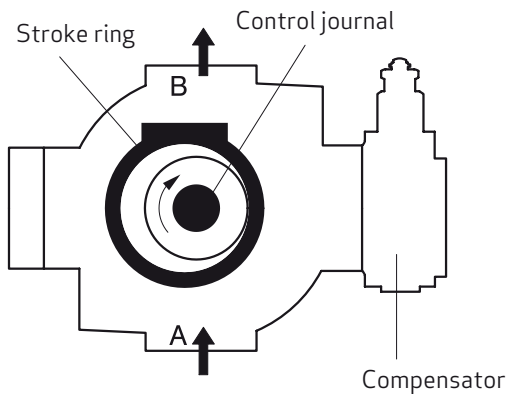
RADIAL PISTON PUMPS RKP-II

PERFORMANCE CURVES

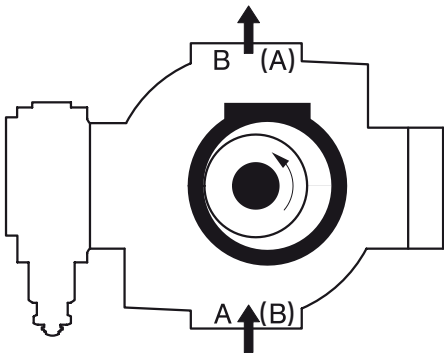
ADJUSTMENT RANGE

⚠ Caution
The rotation of the pump cannot be changed

Clockwise rotation

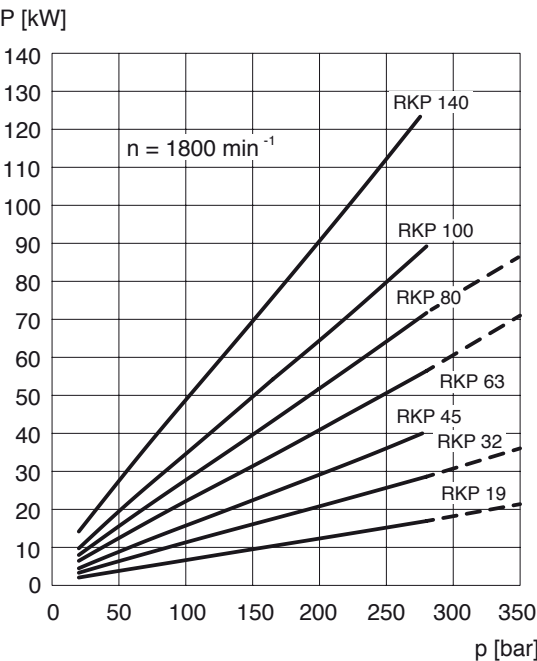
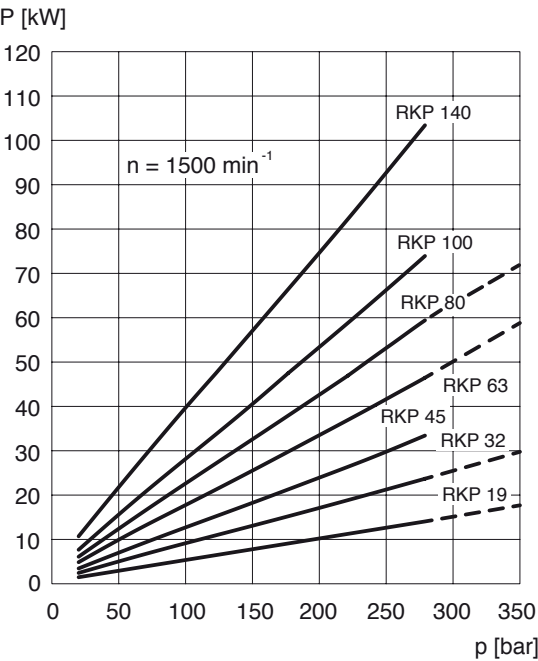


Counter-clockwise rotation



Power consumption P
at maximum flow
hydraulic fluid: mineral oil
viscosity $\nu = 35 \text{ mm}^2/\text{s}$ [cSt]
temperature $T = 50 \text{ }^\circ\text{C}$

Note: For RKP 19
suction port B,
pressure port A



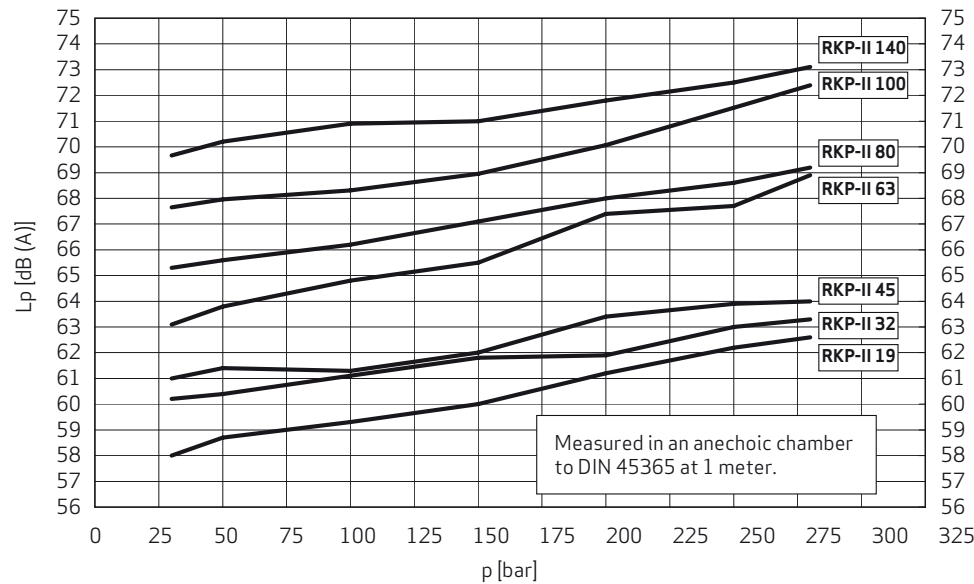
———— Standard version
 High-pressure version

RADIAL PISTON PUMPS RKP-II

PERFORMANCE CURVES

NOISE DIAGRAM

$n = 1500 \text{ min}^{-1}$ at Q_{max}



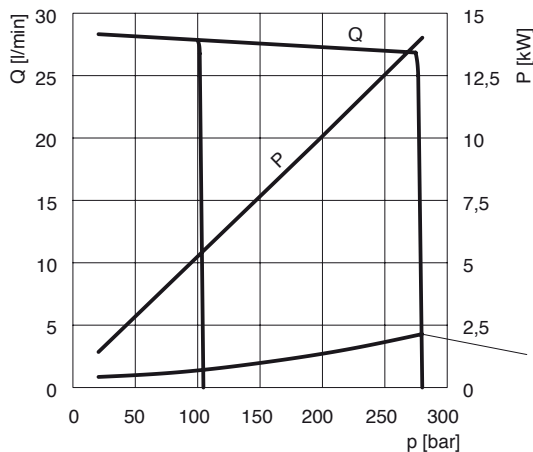
Noise emission values with combined pressure/flow compensator. These are average values over the operating range.

Performance curves of drive power and displacement

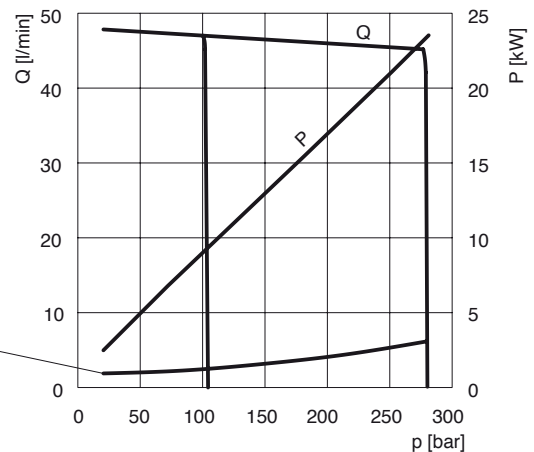
Response time $V_{\text{max}} \rightarrow V_{\text{min}}$: 20 ms to 50 ms (approx. value)
Response time $V_{\text{min}} \rightarrow V_{\text{max}}$: 50 ms to 100 ms
from 70 bar pressure setting (approx. value)

$n = 1500 \text{ min}^{-1}$; $v = 35 \text{ mm}^2/\text{s}$; $T = 50 \text{ }^\circ\text{C}$ (122 °F)

$V = 19 \text{ cm}^3/\text{rev}$

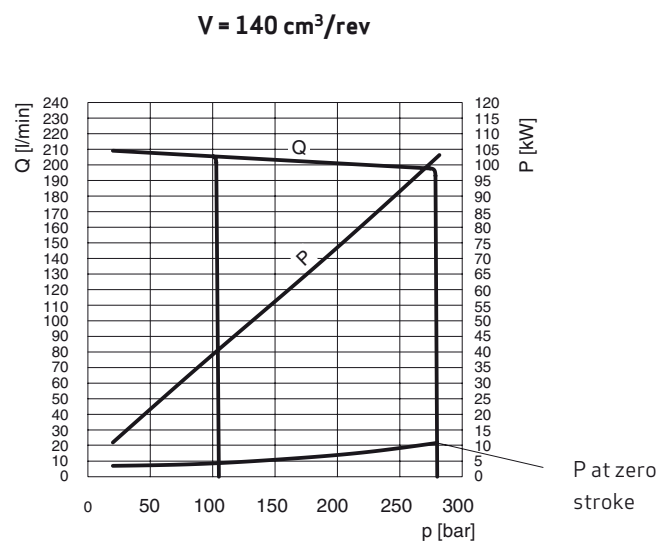
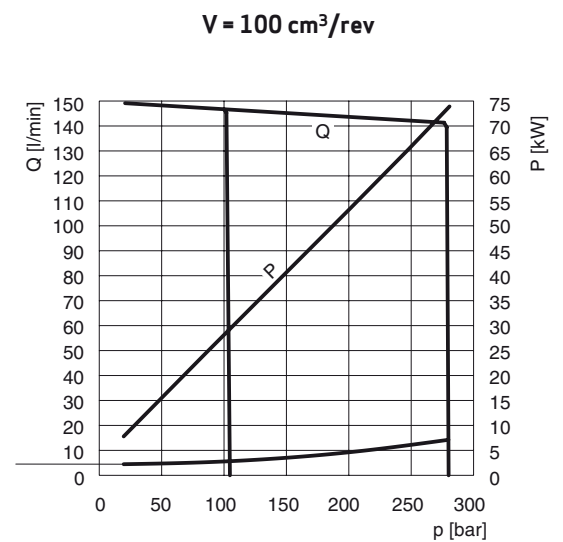
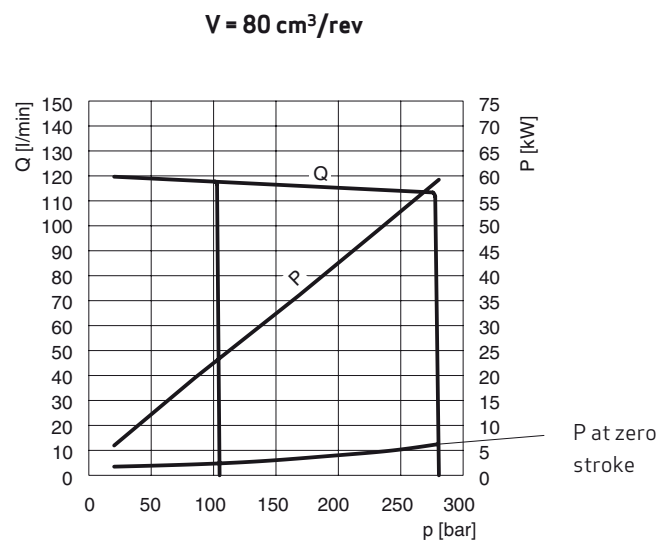
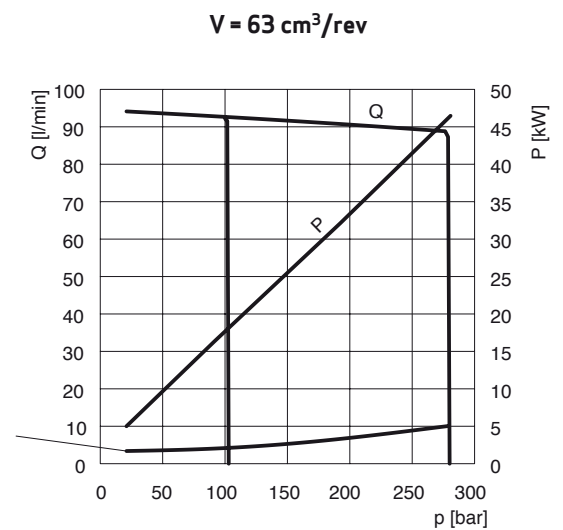
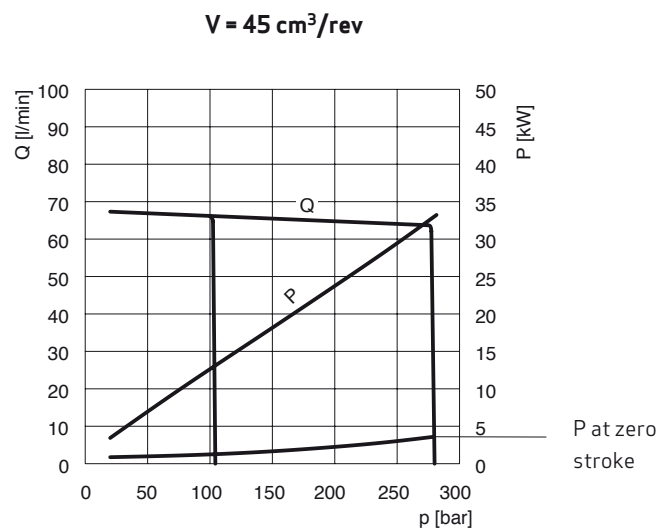


$V = 32 \text{ cm}^3/\text{rev}$



RADIAL PISTON PUMPS RKP-II

PERFORMANCE CURVES



RADIAL PISTON PUMPS RKP-II

COMPENSATOR OPTIONS

COMPENSATOR OPTIONS

RKP-II enables a variety of compensator options to be used thereby ensuring maximum flexibility.
The following options are described in more detail in appendix A.

Compensator option, Model code	Description/characteristics/application
1. Adjustable pressure compensator, Type F	For constant pressure systems with a fixed pressure setting
2. Remote pressure compensator, Type H1	For constant or variable pressure systems with remote pressure
3. Pressure compensator with Mooring control, Type H2	For constant pressure systems with a variable pressure setting for mooring control
4. Combined pressure and flow compensator, Type J	For displacement systems with a variable flow and load sensing pressure control
5. Combined pressure and flow compensator with p-T control notch, Type R	As 4. with additional active reduction of pressure peaks in the event of dynamic control process
6. Mechanical stroke adjustment, Type B	For displacement systems with a fixed displacement that may be manually adjusted as needed
7. Servo control, Type C1	Adjustment of displacement using a hand lever or an actuator
8. Constant horse-power control (force comparison system), Type S1	Automatic reduction of displacement in the event of an increasing load so that the capacity of the drive motor is not exceeded
9. Constant horsepower control with remote pressure and flow control, Type S2	As 8. but with additional adjustable maximum limit for pressure and flow
10. Electro-hydraulically adjustable compensator with digital on-board electronics, Type D	For displacement systems with variable flow and/or pressure limitation

RADIAL PISTON PUMPS RKP-II

MULTIPLE ARRANGEMENTS

RKP MULTIPLE ARRANGEMENTS

Additional pumps can be tandem mounted on the radial piston pump, so that all pump stages can be driven by the same shaft. Radial piston pumps (the same size or smaller than the first pump stage) can be mounted directly.

Other pumps may be added on using adapter flanges for SAE-A, SAE-B or SAE-C respectively (see page 13/14). For the maximum permitted through-drive torque for driving add-on pumps, please refer to the table below.

Adding on RKP, SAE-A, SAE-B or SAE-C adapters Permissible through-drive torques

Pump stage 1	Pump stage 2				SAE-A	SAE-B	SAE-C
RKP-II	RKP-II						
Size (cm ³ /rev)	19	32 45	63 80 100	140			
19	90 Nm	–	–	–	90 Nm	–	–
32/45	185 Nm	185 Nm	–	–	110 Nm	185 Nm	–
63/80/100	400 Nm	400 Nm	400 Nm	–	110 Nm	280 Nm	400 Nm
140	400 Nm	400 Nm	400 Nm	620 Nm	110 Nm	280 Nm	620 Nm

The through-drive torque required to drive add-on pumps is determined by reference to the following variables:

V [cm ³ /rev]	Displacement
p [bar]	Pressure
η _{hm} [%]	Hydro-mechanical efficiency
M [Nm]	Through-drive torque

Example

If we take the following pump combination
RKP 63 + RKP 63 + RKP 32 + AZP 16
280 bar, 210 bar, 150 bar, 50 bar,
the following considerations apply:

Design of 1st through-drive

The pressure and flow of the 1st pump stage are irrelevant to the torque transferred by the through-drive. This torque can be calculated using the above formula.

$$M_1 = 1,59 \cdot \left(\frac{V_2 \cdot p_2}{\eta_{hm2}} + \frac{V_3 \cdot p_3}{\eta_{hm3}} + \frac{V_4 \cdot p_4}{\eta_{hm4}} \right)$$

$$M_1 = 1,59 \cdot (63 \cdot 210 / 95 + 32 \cdot 150 / 93 + 16 \cdot 50 / 90) \text{ Nm}$$

$$M_1 = 318 \text{ Nm}$$

The value 318 Nm is below the threshold value of 400 Nm specified in the above table for mounting an RKP 63 on another RKP 63.

Through-drive torque from pump stage 1 to 2:

$$M_1 = 1,59 \cdot \sum_{i=2}^n \frac{V_i \cdot p_i}{\eta_{hmi}}$$

Design of 2nd through-drive torque

$$M_2 = 1,59 \cdot \left(\frac{V_3 \cdot p_3}{\eta_{hm3}} + \frac{V_4 \cdot p_4}{\eta_{hm4}} \right)$$

$$M_2 = 1,59 \cdot (32 \cdot 150 / 93 + 16 \cdot 50 / 90) \text{ Nm}$$

$$M_2 = 96 \text{ Nm}$$

Likewise, the value 96 Nm lies below the relevant threshold value of 400 Nm for the through-drive from RKP-II 63 to an RKP-II 32.

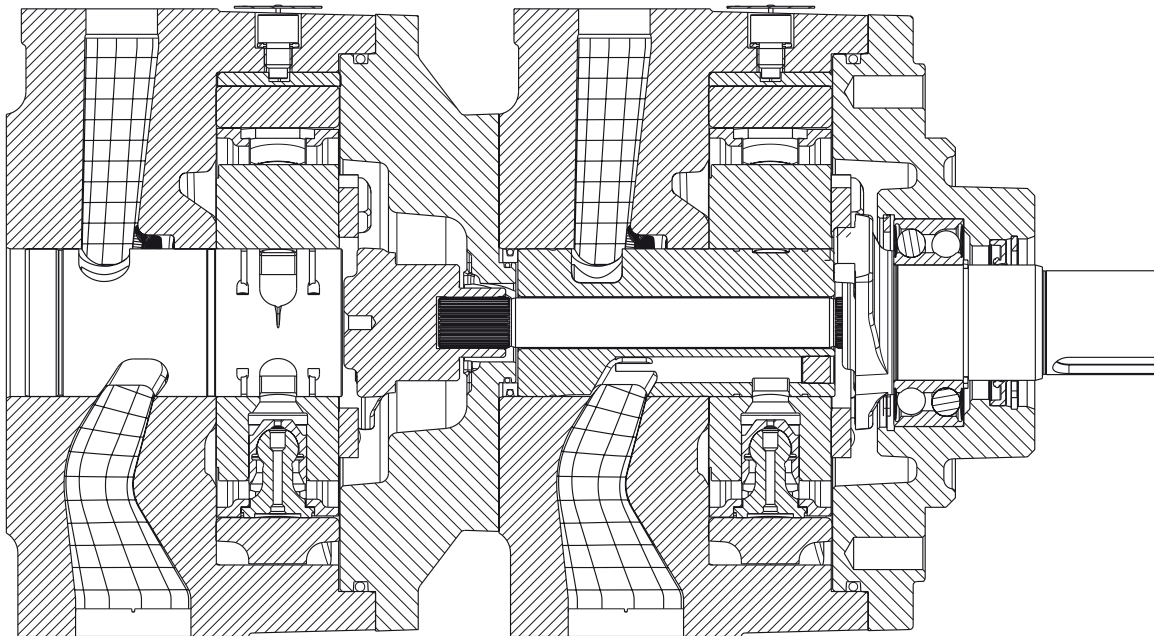
Design of 3rd through-drive torque

Similarly, a value of 14 Nm is obtained for the torque required to drive the add-on gear pump. Thus, the through-drives for this pump combination are permissible with the stated pressures.

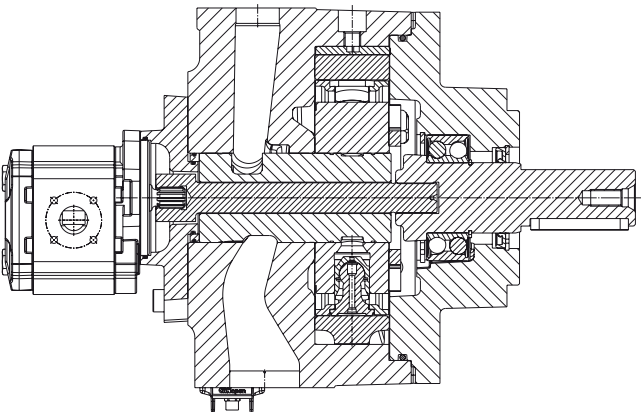
RADIAL PISTON PUMPS RKP-II

MULTIPLE ARRANGEMENTS

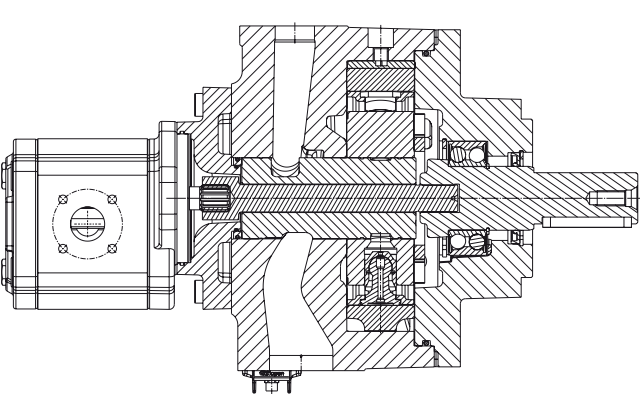
Radial piston pump with heavy-duty through-drive and tandem mounted radial piston pump



Radial piston pump with tandem mounted gear pump using SAE-A adapter



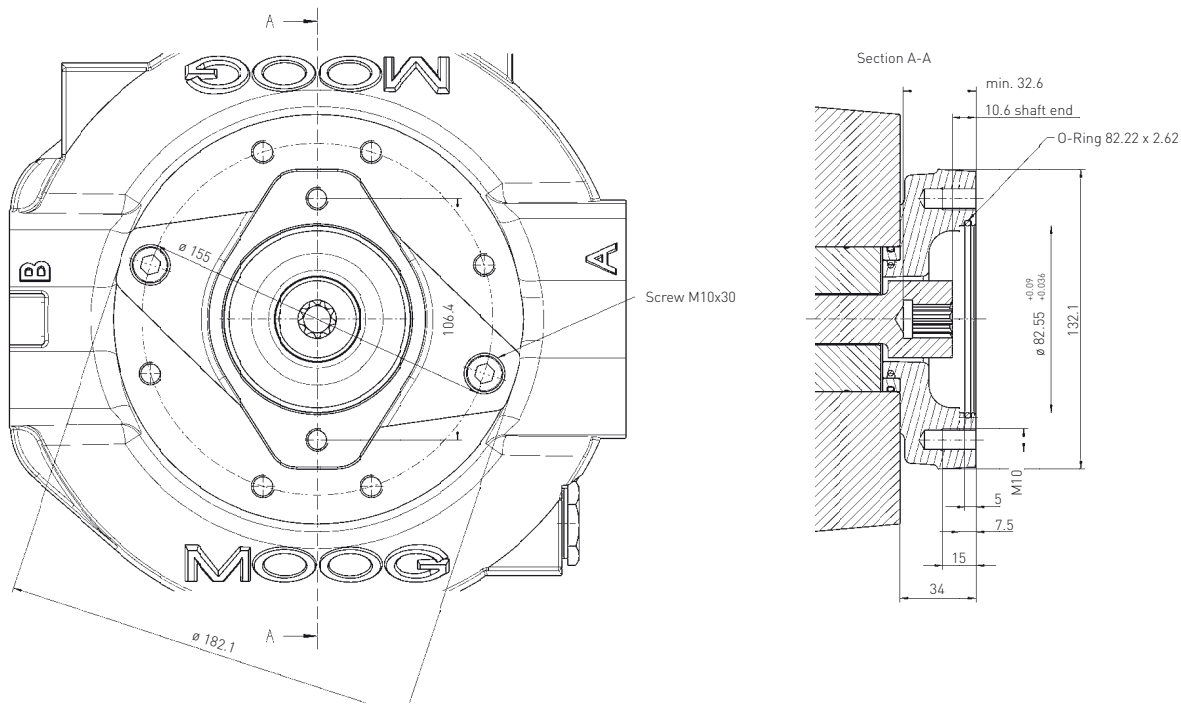
Radial piston pump with tandem mounted gear pump using SAE-B adapter



RADIAL PISTON PUMPS RKP-II

MULTIPLE ARRANGEMENTS

ADAPTOR FLANGE FOR FITTING AN EXTERNAL PUMP USING FLANGE SAE-A ACCORDING TO ISO 3019-1 AND 9-TOOTH SHAFT



Flange code: 82-2

Shaft code: 16-4

Toothing to: ANSI B92.1 9T 16/32 DP Flat root side fit

Conditions for attachment: RKP with heavy-duty through-drive

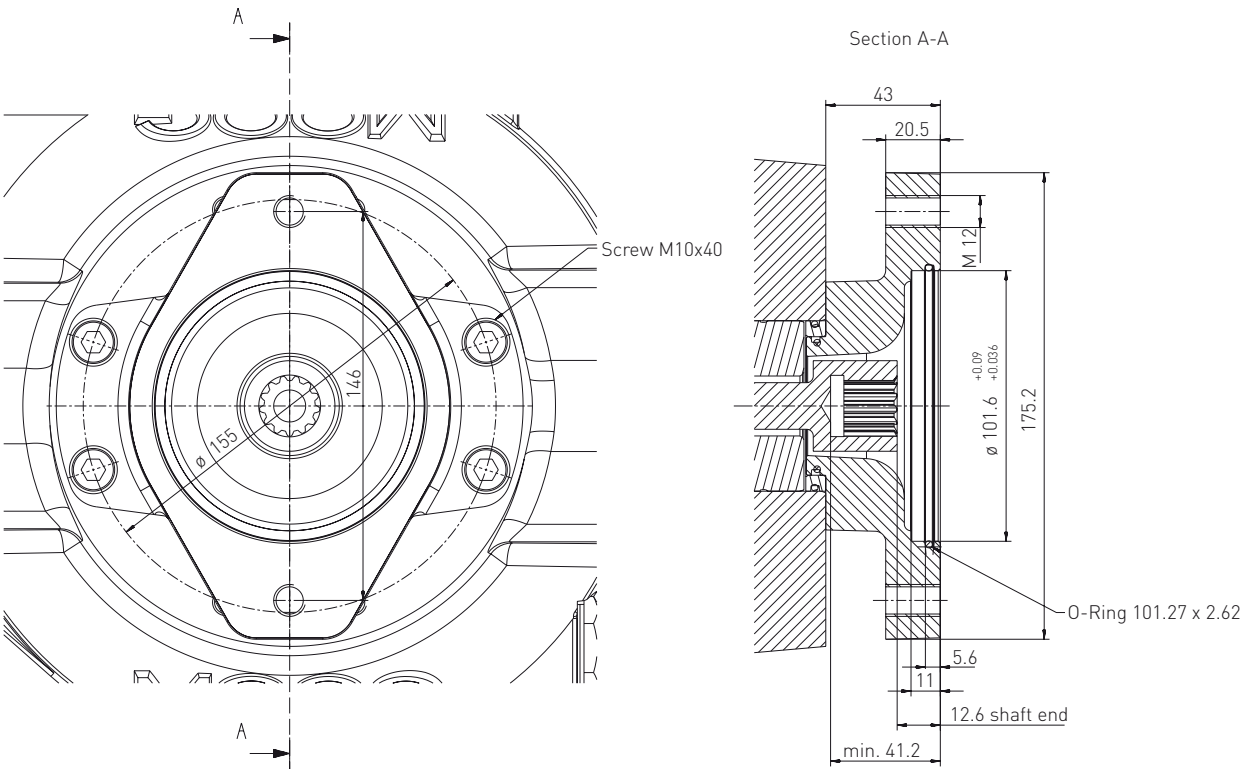
Adaptor including through-drive shaft, seals (HNB-R), intermediate ring for RKP 63-140 and 2 fastening screws.

RKP 19	CA41832-001
RKP 32 / 45	CA51553-001
RKP 63/80/100	CA64727-001
RKP 140	CA64728-001

RADIAL PISTON PUMPS RKP-II

MULTIPLE ARRANGEMENTS

ADAPTOR FLANGE FOR FITTING AN EXTERNAL PUMP USING FLANGE SAE-B ACCORDING TO ISO 3019-1 AND 13-TOOTH SHAFT



- Flange code:** 101-2
- Shaft code:** 22-4
- Toothing to:** ANSI B92.1 13T 16/32 DP Flat root side fit
- Conditions for attachment:** RKP with heavy-duty through-drive

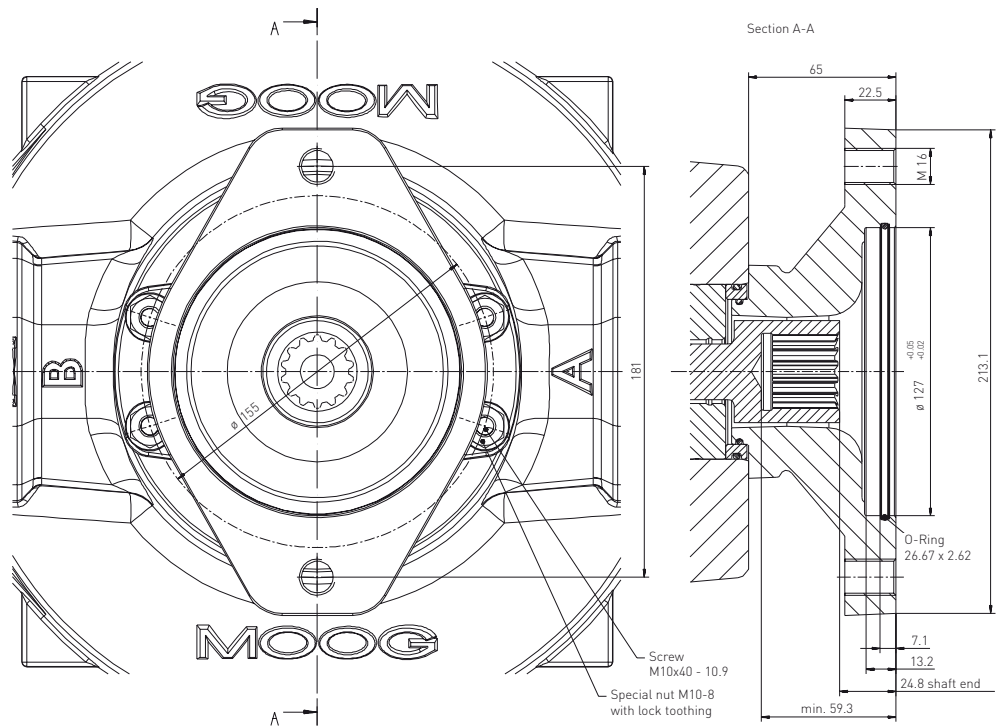
Adaptor including through-drive shaft, seals (HNB-R), intermediate ring for RKP 63-140 and 4 fastening screws.

RKP 32 / 45	CA36273-001
RKP 63/80/100	CA34793-001
RKP 140	CA50487-001

RADIAL PISTON PUMPS RKP-II

MULTIPLE ARRANGEMENTS

ADAPTOR FLANGE FOR FITTING AN EXTERNAL PUMP USING FLANGE SAE-C ACCORDING TO ISO 3019-1 AND 14-TOOTH SHAFT



Flange code: 127-2

Shaft code: 32-4

Toothing to: ANSI B92.114T 12/24DP Flat root side fit

Conditions for attachment: RKP with heavy-duty through-drive

Adaptor including through-drive shaft, seals (HNB-R), intermediate ring for RKP 140 and 4 fastening screws and special nut.

RKP 63/80/100	CA64621-001
RKP 140	CA64622-001

RADIAL PISTON PUMPS RKP-II

MODEL CODE

THE MODEL CODE DESCRIBES PUMP OPTIONS

There are design interfaces (flange, shaft end and ports), hydraulic parameters (volume flow, operating pressure and hydraulic fluid) and control options.

EXAMPLE

Pos. No.	1		2	3	4			
Drive	HP	-	R	18	B1	-		
Pos. No.	5	6	7	8	9	10	11	12
Pump 1	RKP	100	T	M	28	D1	Z	00
Pump 2	RKP	063	K	M	28	D2	Z	00
Pump 3	AZP	008	R	M	28	TP	0	00

		Drive			Radial Piston Pump							
Pos.	1	2	3	4	5	6	7	8	9	10	11	12
Sym.	HP	R	18	B1	RKP	100	T	M	28	D1	Z	00
					Radial Piston Pump							
		5	6	7	8	9	10	11	12			
		RKP	063	K	M	28	D2	Z	00			
					Radial Piston Pump							
		5	6	7	8	9	10	11	12			
		AZP	008	R	M	28	TP	0	00			

Pos.	Sym.	Drive
1	HP HK HZ	Code Hydraulic Pump Explosion protection pump (ATEX) Pump with special features
2	R L	Rotations Clockwise, looking at drive shaft Counterclockwise, looking at drive shaft
3	18	Speed Max. speed for low noise operation or rated speed for power controlled pumps, e. g. 18 = n = 1800 min ⁻¹
4	A1 B1 A7 B7 C3 D3 A5 C6 XX	Drive flange Straight key according to DIN 6885, metric round flange (not for RKP 140) Spline according to DIN 5482, metric round flange (not for RKP 140) Straight key according to DIN 6885, 4 holes ISO flange according to DIN ISO 3019/2 (metric) Spline according to DIN 5480, 4 holes ISO flange according to DIN ISO 3019/2 (metric) Straight key according to SAE 744 C, 2/4 holes SAE-flange according to DIN ISO 3019/1 (inch) Spline according to SAE 744 C (ISO 3019/1), 2/4 holes SAE-flange according to DIN ISO 3019/1 (inch) Straight key according to DIN 6885, metric round flange for polyurethane foam Straight key according to SAE 744 C, 2/4 holes SAE-flange according to DIN ISO 3019/1 (inch) for polyurethane foam Intermediate flange RKP/RKP

RADIAL PISTON PUMPS RKP-II

MODEL CODE

Pos.	Sym.	Radial Piston Pump
5	RKP AZP DS1	Pump type Radial piston pump, variable displacement Moog gear pump with SAE-A and SAE-B flange Attachment of other pumps Heavy-duty through-drive for RKP attachment and adapter flange for SAE-A, SAE-B or SAE-C
6	019 032 045 063 080 100 140 005 008 011 016 019 023 031 033 044 050	Displacement RKP-II 19 cm ³ /rev 32 cm ³ /rev 45 cm ³ /rev 63 cm ³ /rev 80 cm ³ /rev 100 cm ³ /rev 140 cm ³ /rev Displacement and attachment flange of Moog gear pumps (AZP) 5 cm ³ /rev SAE-A 8 cm ³ /rev SAE-A 11 cm ³ /rev SAE-A 16 cm ³ /rev SAE-A 19 cm ³ /rev SAE-A 23 cm ³ /rev SAE-A 31 cm ³ /rev SAE-A 33 cm ³ /rev SAE-B 44 cm ³ /rev SAE-B 50 cm ³ /rev SAE-B
7	K T S H R	Pump ports Medium pressure series (to 280 bar) sizes 32, 45, 63 and 80 cm³/rev Medium pressure series (to 280 bar) sizes 100 cm³/rev and 140 cm³/rev High pressure series (to 350 bar) sizes 32, 63 and 80 cm ³ /rev Medium pressure series (to 280 bar) size 19 cm³/rev High pressure series (to 350 bar) size 19 cm ³ /rev German 4 bolt flange (only for gear pumps)
8	M A B C D E	Operating fluid Mineral Oil HFA (oil in water) HFB (oil in water) HFC (water glycol) HFD (synthetic esther) Cutting Emulsion
9	28 35	Operating pressure Maximum operating pressure e.g., 280 bar = 28 Maximum operating pressure e.g., 350 bar = 35

RADIAL PISTON PUMPS RKP-II

MODEL CODE

Pos.	Sym.	Radial Piston Pump
10	B1 C1 D1¹ D2¹ D3 ¹ D4 ¹ D5 ¹ D6 ¹ D7 ¹ D8 ¹ F1 F2 G1 G2 H1 H2 J1 J2 R1 S1 S2 S3 TP	Control/Compensators Mechanical stroke adjustment (V = constant) Servo control RKP-D (electro-hydraulic control with digital on-board electronics), analog or digital activation and internal pressure supply RKP-D (electro-hydraulic control with digital on-board electronics), analog or digital activation and external pressure supply RKP-D with external pressure supply, useable for hybrid operation RKP-D with internal pressure supply, useable for hybrid operation RKP-D with internal pressure supply useable for master/slave operation RKP-D with external pressure supply useable for master/slave operation RKP-D with external pressure supply useable for master/slave and hybrid operation RKP-D with internal pressure supply useable for master/slave and hybrid operation Pressure compensator, adjustable from 30 bar - 105 bar Pressure compensator, adjustable from 80 bar - 350 bar Pressure compensator, adjustable and lockable, from 30 bar - 105 bar Pressure compensator, adjustable and lockable, from 80 bar - 350 bar Pressure compensator, hydraulically controlled Mooring control Combined pressure and flow compensator $\Delta p = 10$ bar Combined pressure and flow compensator $\Delta p = 20$ bar Combined pressure and flow compensator with P-T control notch Constant horsepower control Constant horsepower control with pressure-flow limitation, $\Delta p = 10$ bar Constant horsepower control with pressure-flow limitation, $\Delta p = 20$ bar Gear pump
11	Z Y 0	Additional equipment No Accessories Maximum flow limiter Only at gear pump
12	00 01 04 05 07 11 15 18 22 30 37 45 05 to 50	Additional information For Compensators D1 to D8 Actual value 4 mA to 20 mA Actual value 2 V to 10 V For compensators S1, S2, S3 output P for specified speed 4 kW (RKP 32) 5.5 kW (RKP 32) 7.5 kW (RKP 32, 63) 11 kW (RKP 32, 63) 15 kW (RKP 32, 63, 100) 18 kW (RKP 63, 100) 22 kW (RKP 63, 100) 30 kW (RKP 63, 100) 37 kW (RKP 100) 45 kW (RKP 100) For tandem gear pumps: Displacement of the 2nd gear pump 5 cm ³ /rev to 50 cm ³ /rev

¹ See catalog RKP with digital control (RKP-D)
Options may increase price. Not all combinations may be available.
Preferred configurations are highlighted. Subject to change.

RADIAL PISTON PUMPS RKP-II

TECHNICAL INFORMATION

TECHNICAL INFORMATION

Important

The pump must be put into service by a trained hydraulic systems engineer.

Installation

The radial piston pump can be mounted in any position. The drive shaft must not be subject to radial or axial loads and should therefore to be driven through a flexible coupling. The pump must be driven in the correct direction of rotation. All plugs on the pump should only be removed immediately before the pipes are connected and standard hydraulic cleanliness procedures to be used. The use of cold drawn seamless steel pipes in accordance with DIN 2391 is recommended.

Suction line (A)

It is recommended that final piping connections to the pump are flexible hoses. The shortest possible suction line should be used with a diameter large enough to give a fluid velocity below 1.5 m/sec.

Sharp angles and screwed pipe joints should be avoided due to the danger of air ingress and excessive pressure drop therefore, pipe bends and/or hoses should be used.

The minimum permissible inlet pressure must be maintained. If a suction filter (min. 0.15 mm mesh aperture) or an isolating valve is to be used, it must be installed below the fluid level.

Pressure line (B)

Ensure the pressure pipework is securely clamped and the screws are correctly torque tightened.

Drain line (L)

The upper drain port must be used for the drain line and the pipework is to be routed to ensure the housing is always full of fluid. The pipe should lead directly to the tank, separate from other return lines.

It must terminate below the lowest fluid level and should be as far away from the suction take off as possible. Do not fit a filter, cooler or non-return valve in the drain line. The maximum recommended length for the drain line is 3 metres (10 ft.).

The pressure at drain port is not to exceed 1 bar gauge (14.5 psi) (2 bars absolute (29 psi)).

The recommended outside pipe diameters for drain lines (lightweight version) are:

RKP 19: 15 mm (5/8")

RKP 32 and 45: 18 mm (3/4")

RKP 63, 80, 100 and 140: 22 mm (7/8").

Flushing the housing

If the pump is operated at low pressure without flow for long periods ($t > 15$ min, $p < 30$ bar (435 psi), $Q = 0$ l/min), pump sizes 63 cm³/rev to 100 cm³/rev must be flushed with approx. 4 l/min to 6 l/min (1 US gal/min to 1.5 US gal/min) to dissipate the heat generated. The 140 cm³/rev pump must always be flushed with 6 l/min to 8 l/min (1.5 US gal/min to 2 US gal/min). The flushing line to the pump must be connected to the lower drain port.

Noise development

Radial piston pumps have a low primary noise level. However, the overall noise level hydraulic of the unit depends on the pump mounting and piping layout and the transmitted noise can be prevented by:

- connecting the pump to the bellhousing using an anti-vibration flange.
- use flexible hoses instead of solid pipes.
- clamp the pipework with elastic insert clamps.

Connections

Suction line to port A and pressure line from port B. Except for RKP 19 counterclockwise: suction port B, pressure port A.

Putting into service

Do not start up the pump without hydraulic fluid. Before switching on, the pump housing must be filled with hydraulic fluid using the higher drain port.

Jog start the electric motor to check the correct direction of rotation. Run the pump at low pressure until the hydraulic system has been fully de-aerated. When putting pumps for HF fluids into operation, the system must be run at low pressure of between 30 bar to 50 bar (435 psi to 725 psi) for approximately 1 hour.

Important

The oil temperature in the tank must not exceed the temperature of the pump by more than 25° C (77° F).

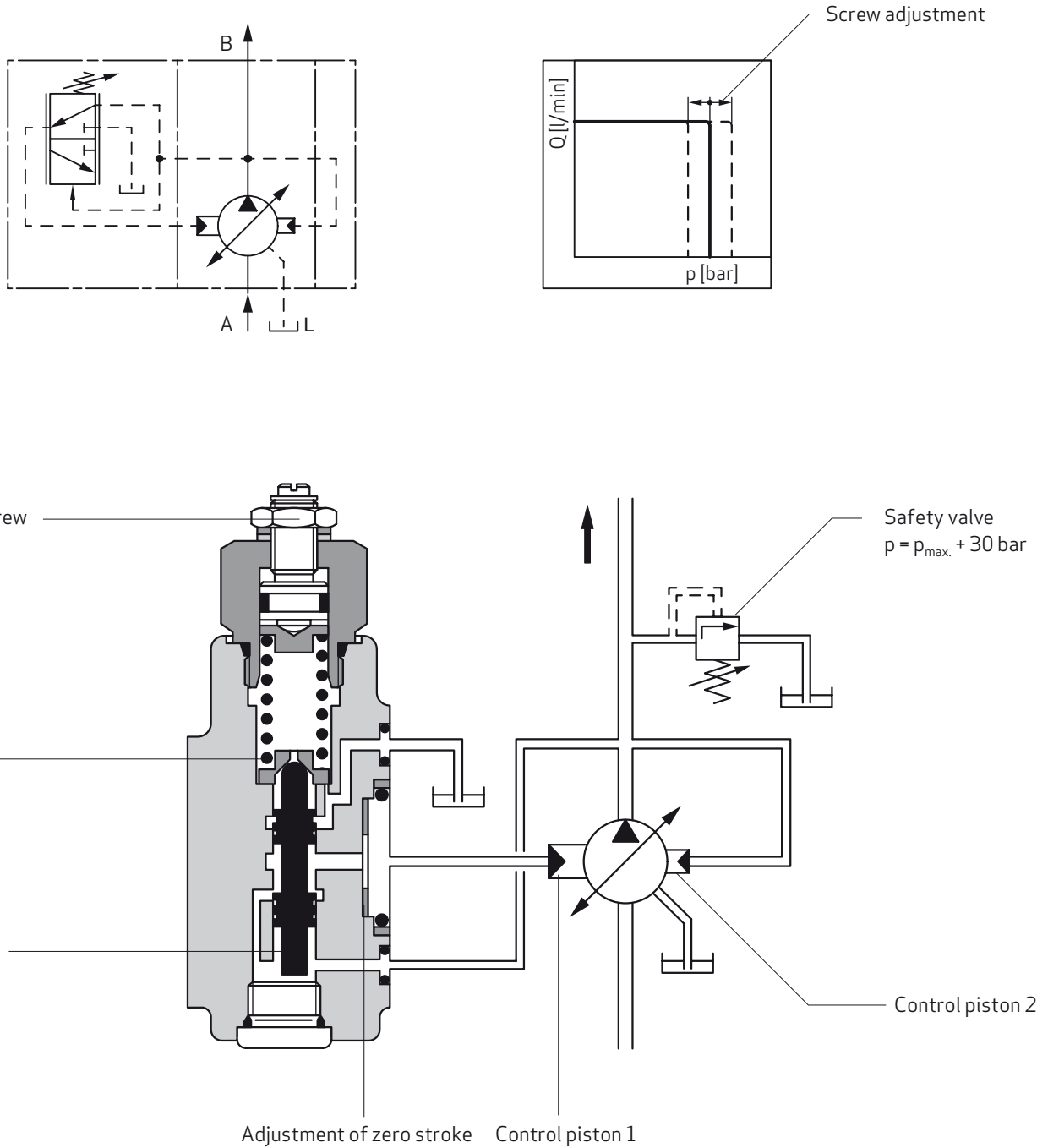
If this should occur, the pump must be jog started for intervals of approximately 1 to 2 seconds until pump casing has heated up. When changing a pump, clean the suction pipe, drain line and tank. Refill the tank with filtered oil.

RADIAL PISTON PUMPS RKP-II

APPENDIX A – COMPENSATOR OPTIONS

1. ADJUSTABLE PRESSURE COMPENSATOR F1, F2

Pressure range:
F1: 30 bar to 105 bar
F2: 80 bar to 350 bar



RADIAL PISTON PUMPS RKP-II

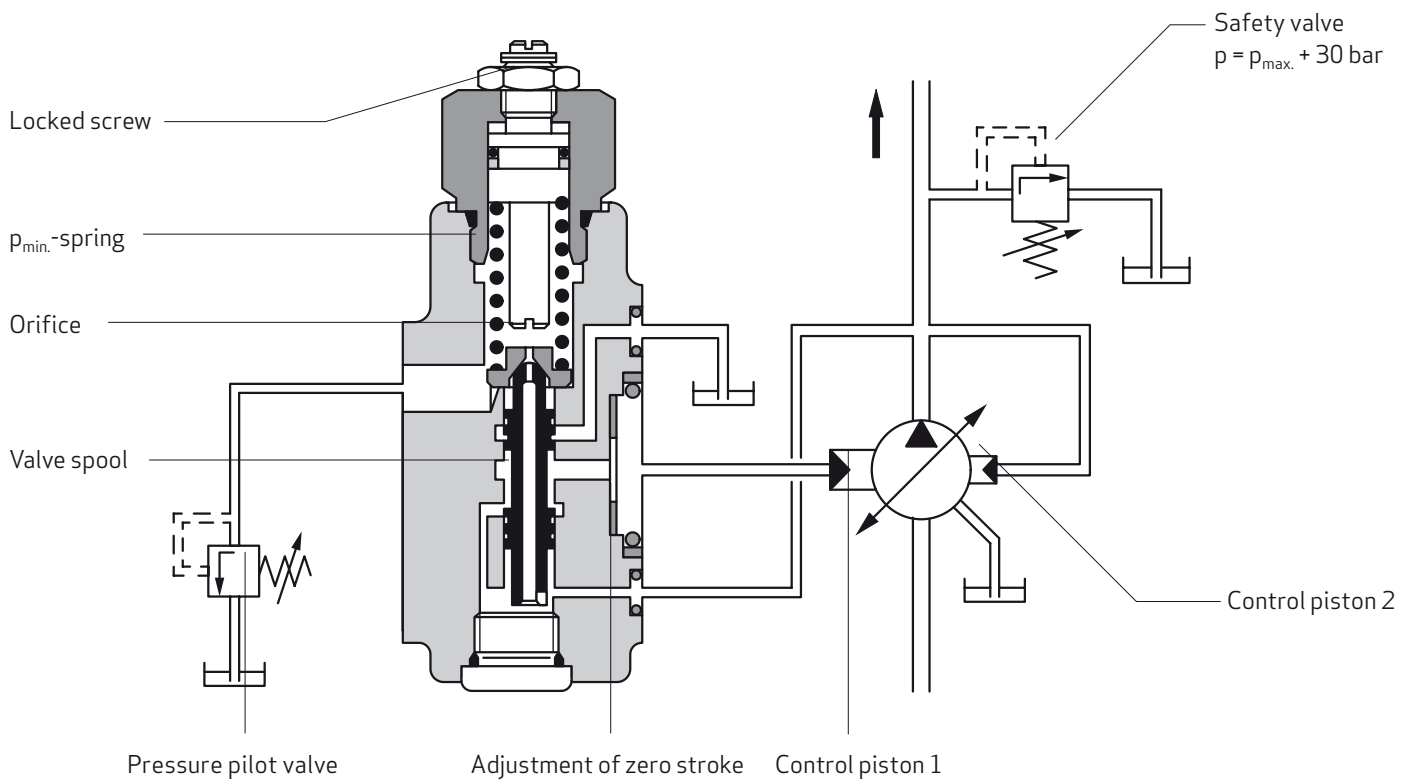
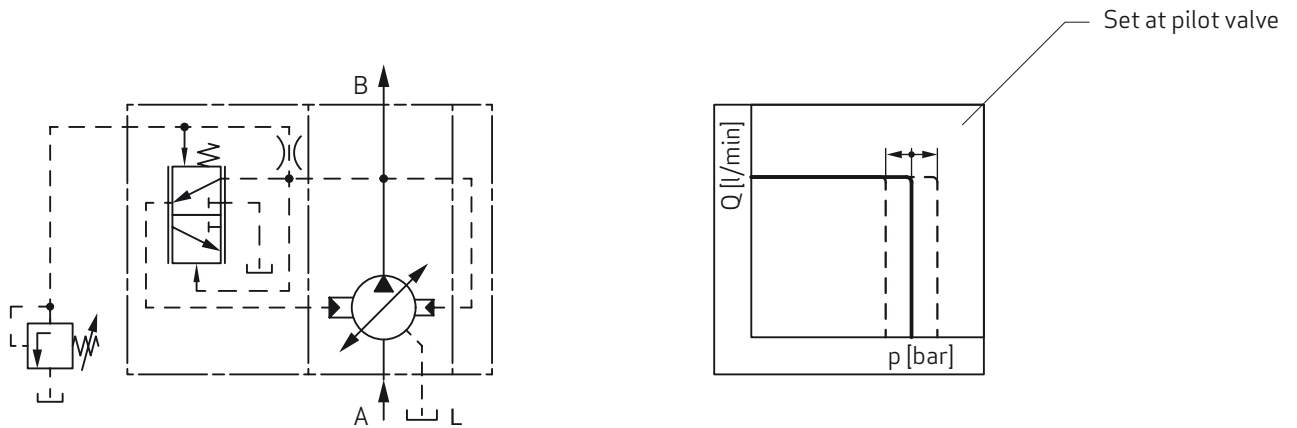
APPENDIX A – COMPENSATOR OPTIONS

2. REMOTE PRESSURE COMPENSATOR H1

Pressure pilot valve:

Manual remote adjustable or proportional pressure valve

$Q = 0.5 \text{ l/min to } 1.5 \text{ l/min}$



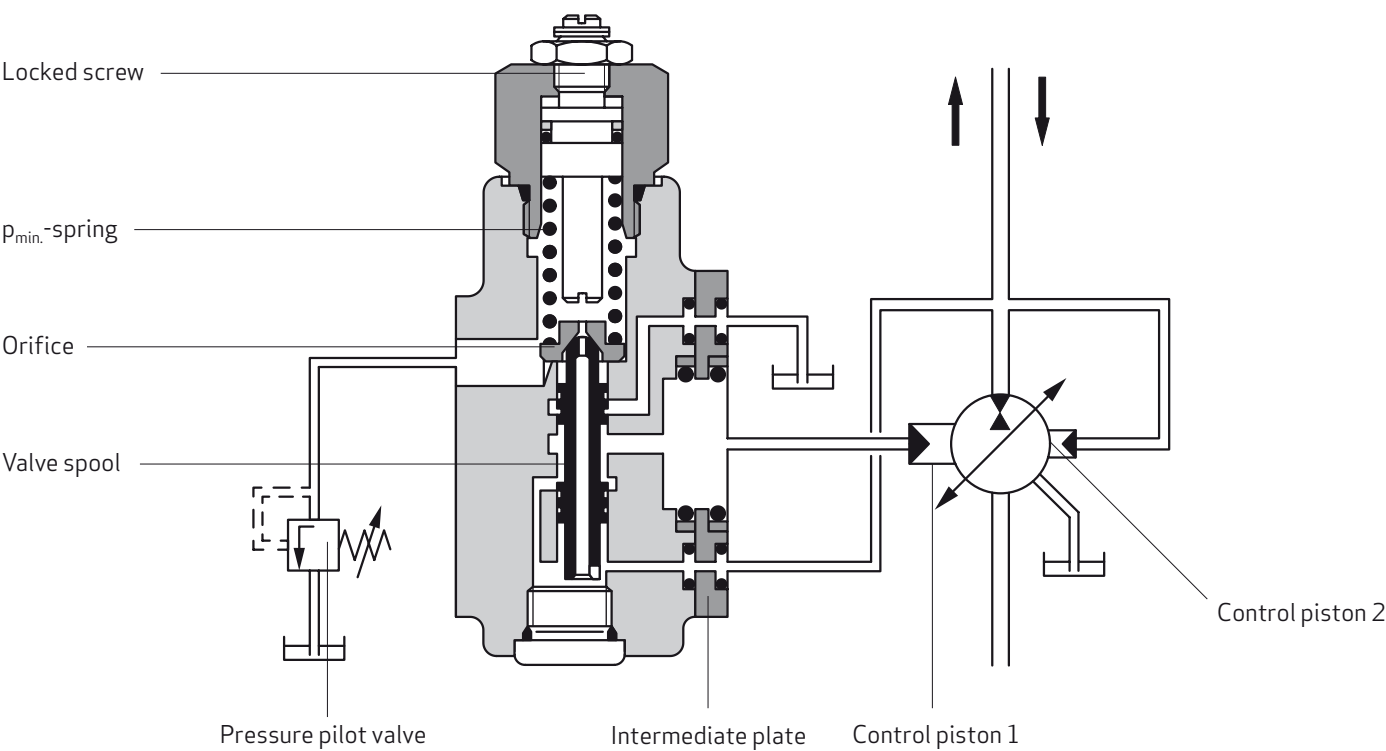
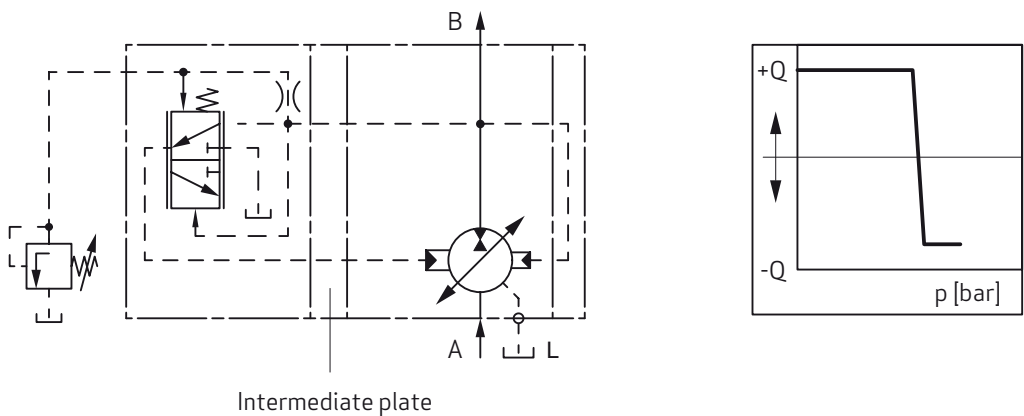
RADIAL PISTON PUMPS RKP-II

APPENDIX A – COMPENSATOR OPTIONS

3. REMOTE PRESSURE COMPENSATOR WITH MOORING CONTROL H2

The "Mooring" control consists of a pressure compensator which has an intermediate plate inserted between the pump body and the pressure compensator.

The thickness of the intermediate plate corresponds to the eccentricity of the stroke ring.



RADIAL PISTON PUMPS RKP-II

APPENDIX A – COMPENSATOR OPTIONS

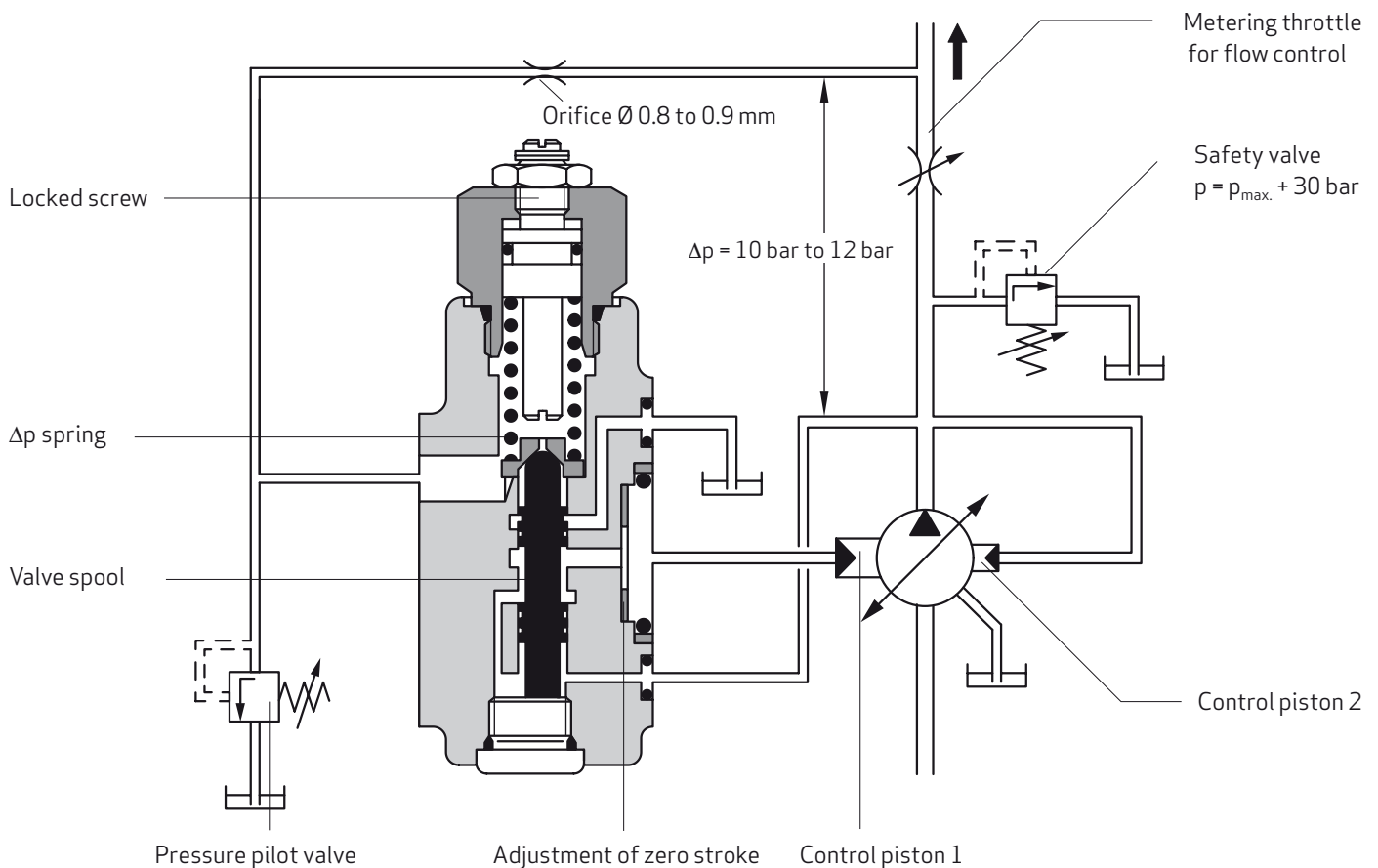
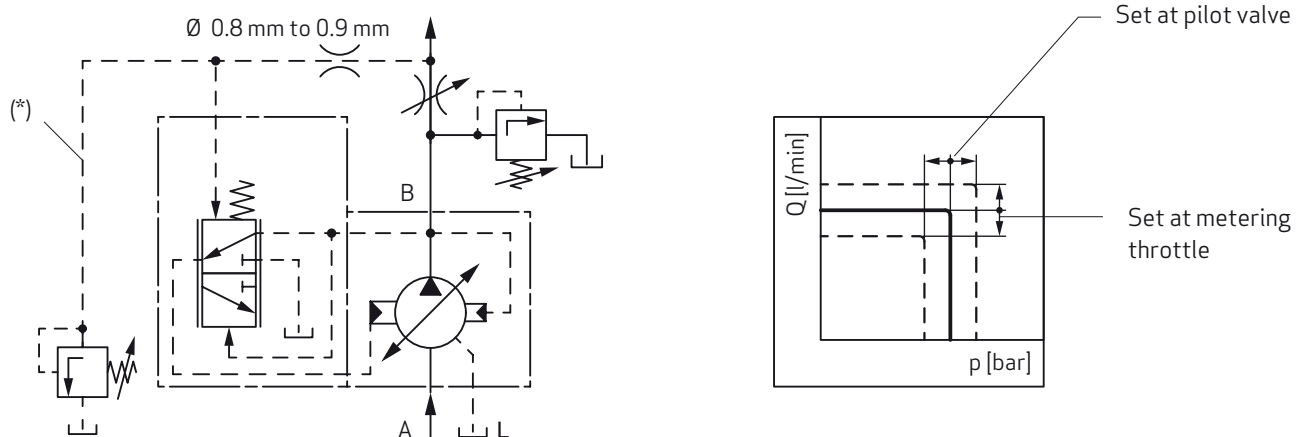
4. COMBINED PRESSURE AND FLOW COMPENSATOR („LOAD SENSING“) J1

Metering throttle:

Manual adjustable throttle valve or proportional throttle valve.

Pressure pilot valve:

Manual adjustable or proportional pressure valve
 $Q = 0.5 \text{ l/min to } 1.5 \text{ l/min}$



* Hose recommendation for control line see page 42

RADIAL PISTON PUMPS RKP-II

APPENDIX A – COMPENSATOR OPTIONS

5. COMBINED PRESSURE AND FLOW COMPENSATOR WITH P-T CONTROL NOTCH R1

Metering throttle:

Manual adjustable throttle valve or proportional throttle valve.

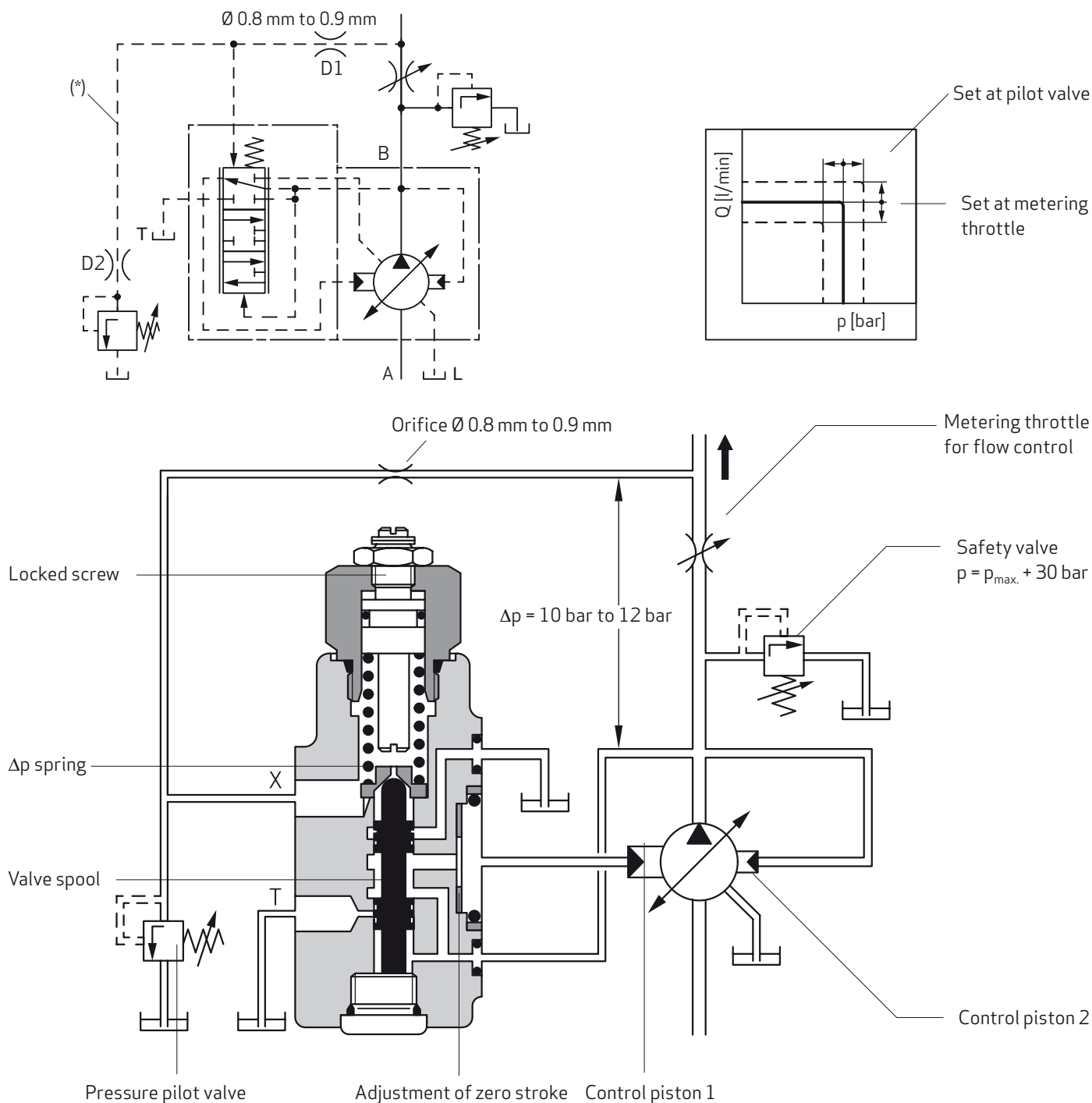
Pressure pilot valve:

Manual adjustable or proportional pressure valve

$Q = 1 \text{ l/min to } 1.5 \text{ l/min}$

In multiple pumps feeding in one common line, only **one** compensator with P-T control notch may be installed.

This compensator must be set to a higher Δp .

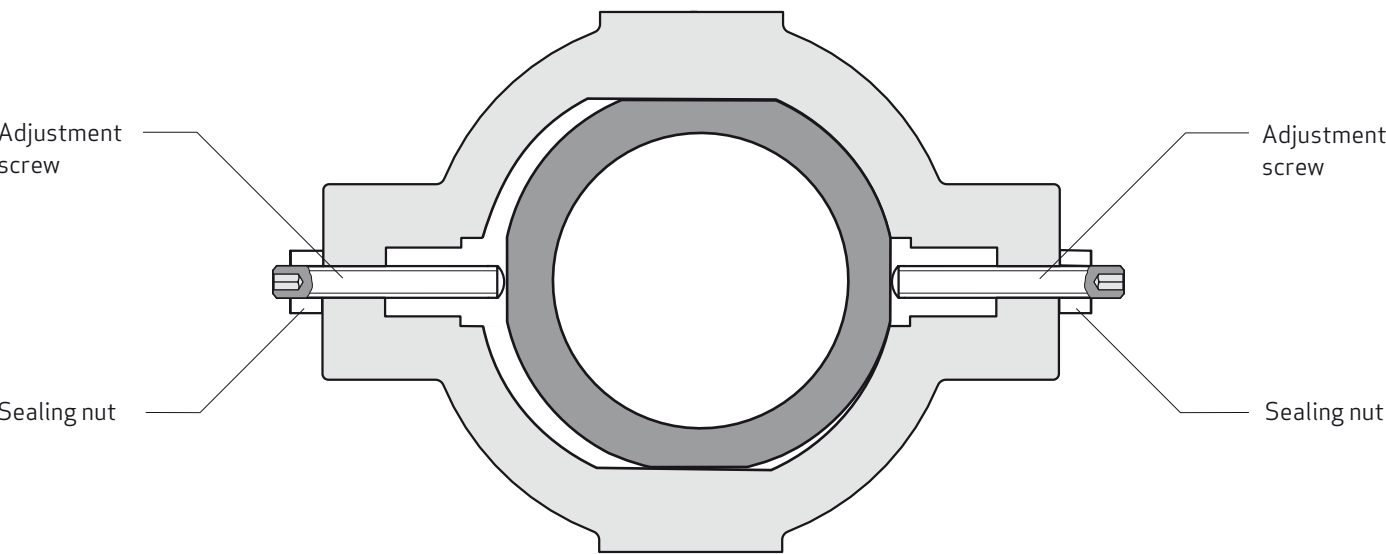
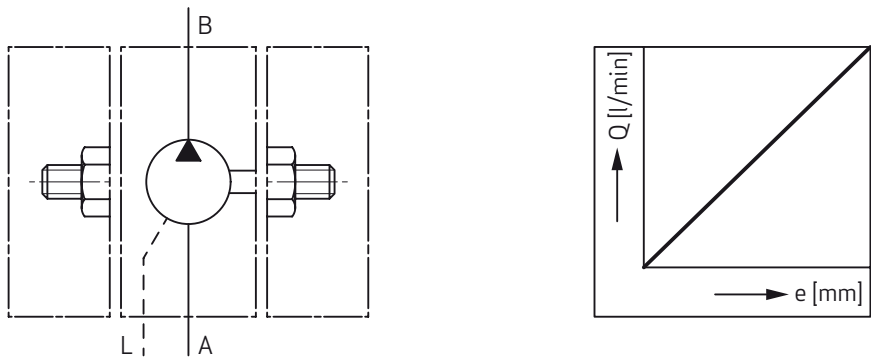


* Hose recommendation for control line see page 43

RADIAL PISTON PUMPS RKP-II

APPENDIX A – COMPENSATOR OPTIONS

6. MECHANICAL STROKE ADJUSTMENT B1



V [cm ³ /rev]	19	32	45	63/80	100	140
ΔV for 1 mm travel of adjusting screw (pitch 1.5 mm/rev)	3.6	5.6	6.5	8.9	11.3	11.5

Important

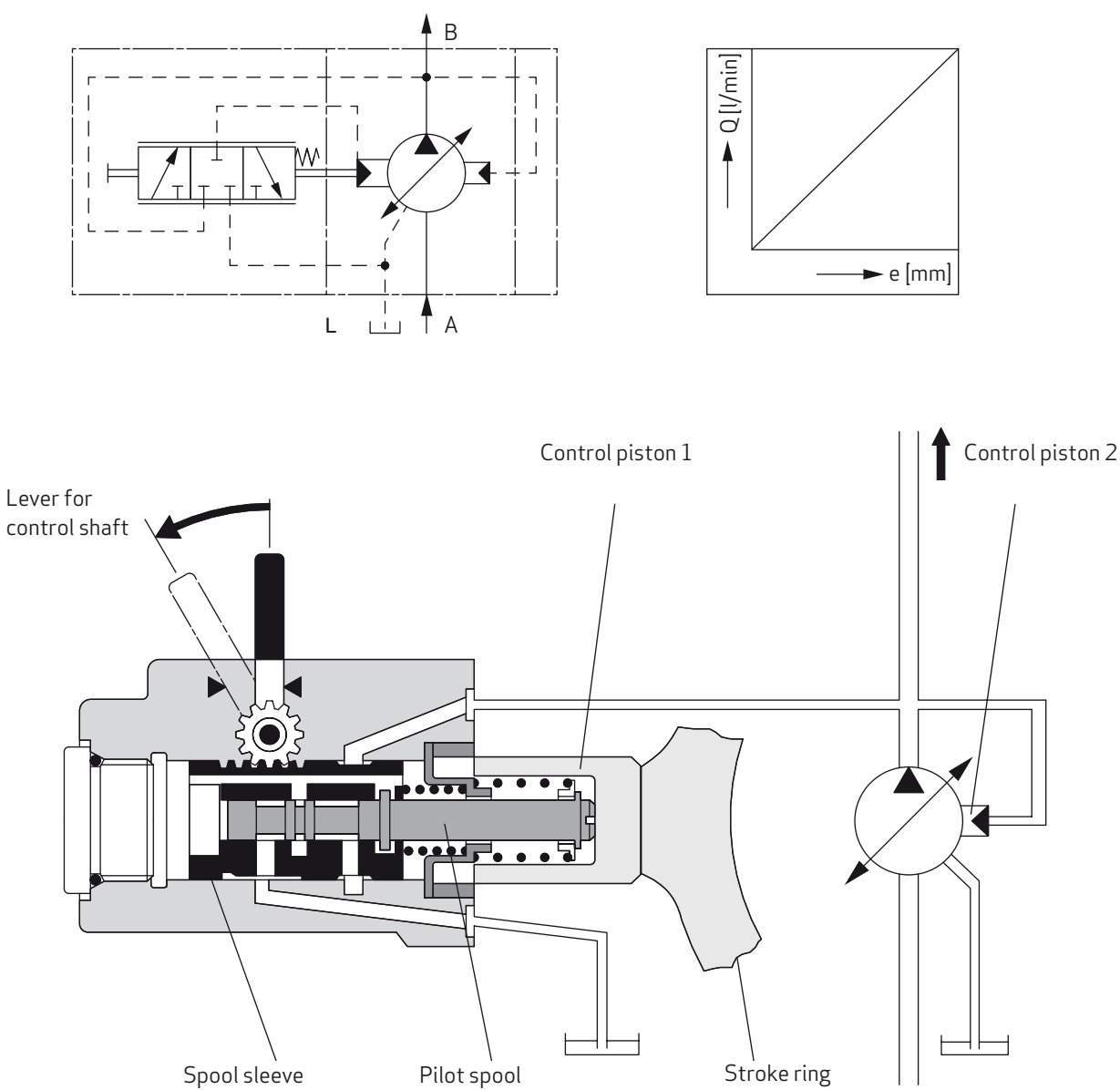
When adjusting for the required delivery, ensure that the stroke ring remains held between the two adjusting screws.
When delivered, the pump is set V_{max} .

RADIAL PISTON PUMPS RKP-II

APPENDIX A – COMPENSATOR OPTIONS

7. SERVO CONTROL C1

Actuated manually or mechanically by means of a lever.
 The pump displacement is controlled by the position of the lever.

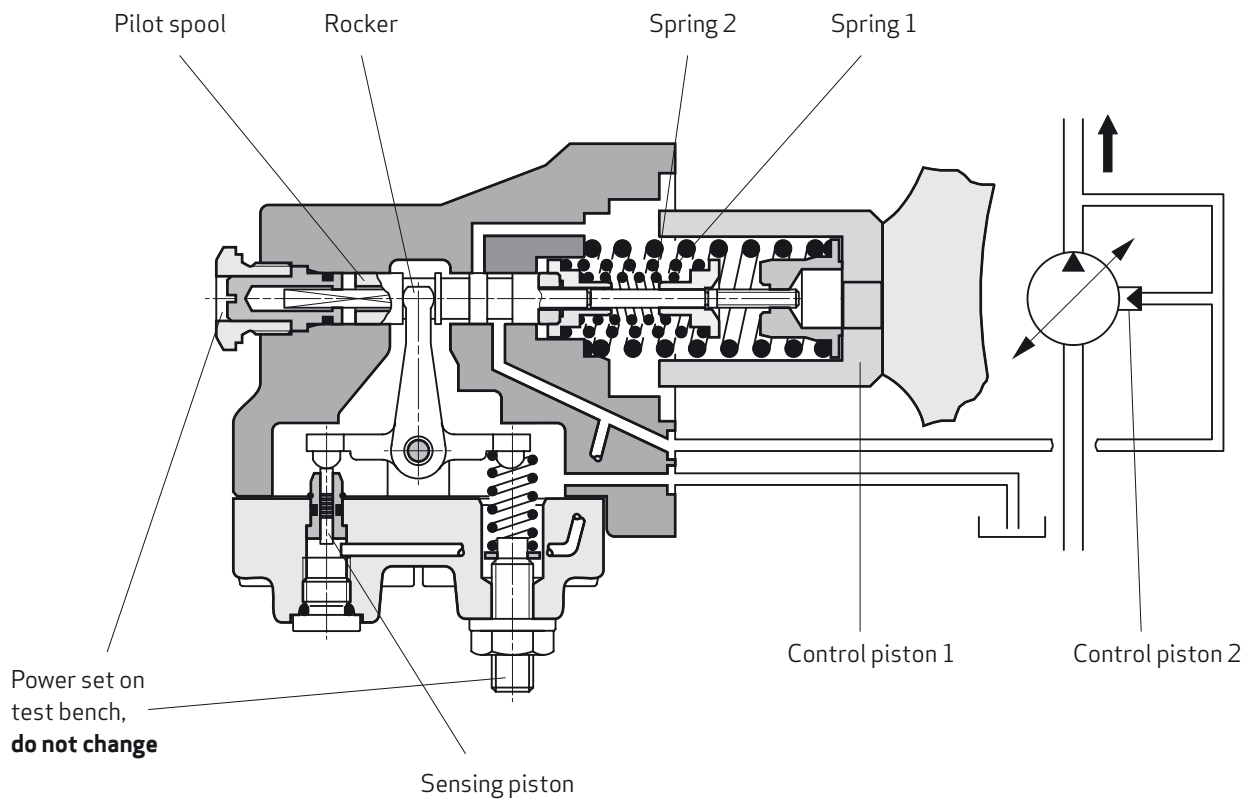
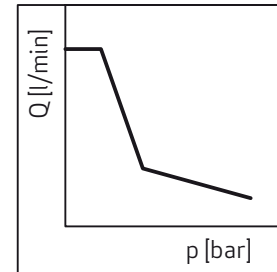
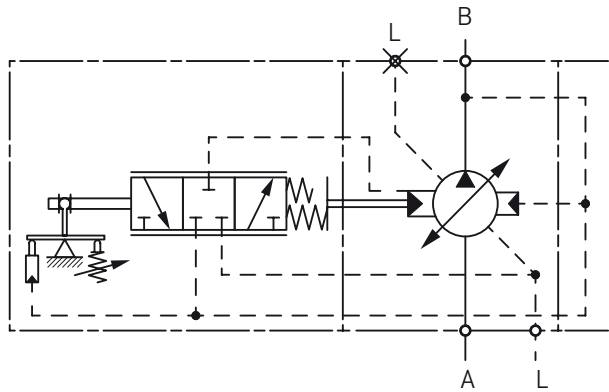


V [cm³/rev]	Control torque		
	Neutral position	Final position	Max. permissible
19	1.2 Nm	1.7 Nm	8 Nm
32, 45	1.2 Nm	1.7 Nm	8 Nm
63, 80	1.6 Nm	2.4 Nm	8 Nm
100	1.6 Nm	2.4 Nm	8 Nm

RADIAL PISTON PUMPS RKP-II

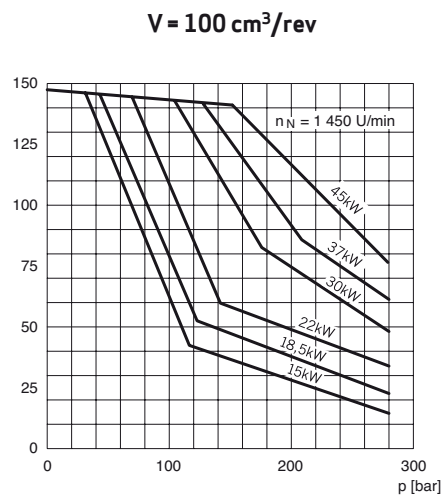
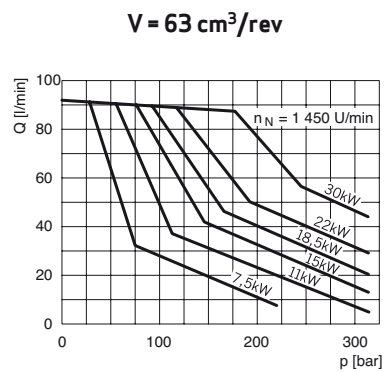
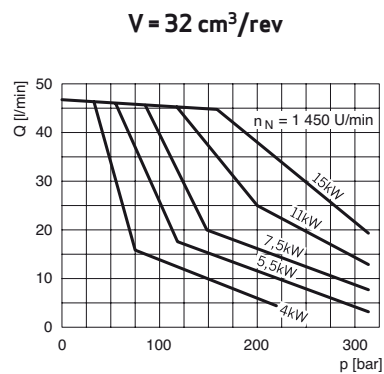
APPENDIX A – COMPENSATOR OPTIONS

8. CONSTANT HORSEPOWER CONTROL S1



RADIAL PISTON PUMPS RKP-II

APPENDIX A – COMPENSATOR OPTIONS



Approximation of the power hyperbola by 2 springs.

Referenced $n = 1450 \text{ min}^{-1}$.

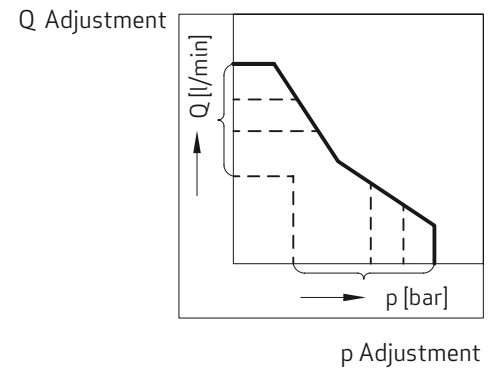
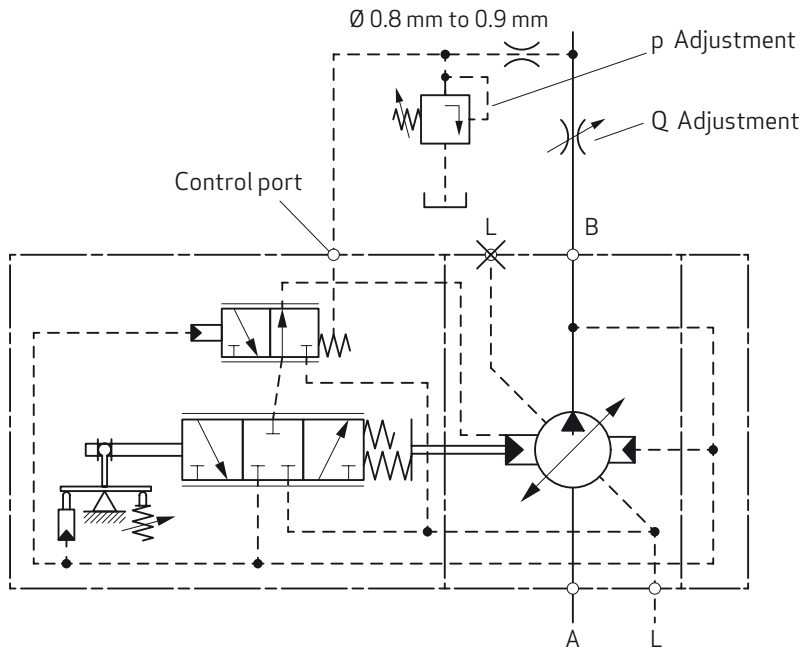
For other speeds is valid:

$$P = \frac{P_N \cdot n}{1450}$$

RADIAL PISTON PUMPS RKP-II

APPENDIX A – COMPENSATOR OPTIONS

9. CONSTANT HORSEPOWER CONTROL WITH REMOTE PRESSURE AND FLOW LIMITER S2



RADIAL PISTON PUMPS RKP-II

APPENDIX A – COMPENSATOR OPTIONS

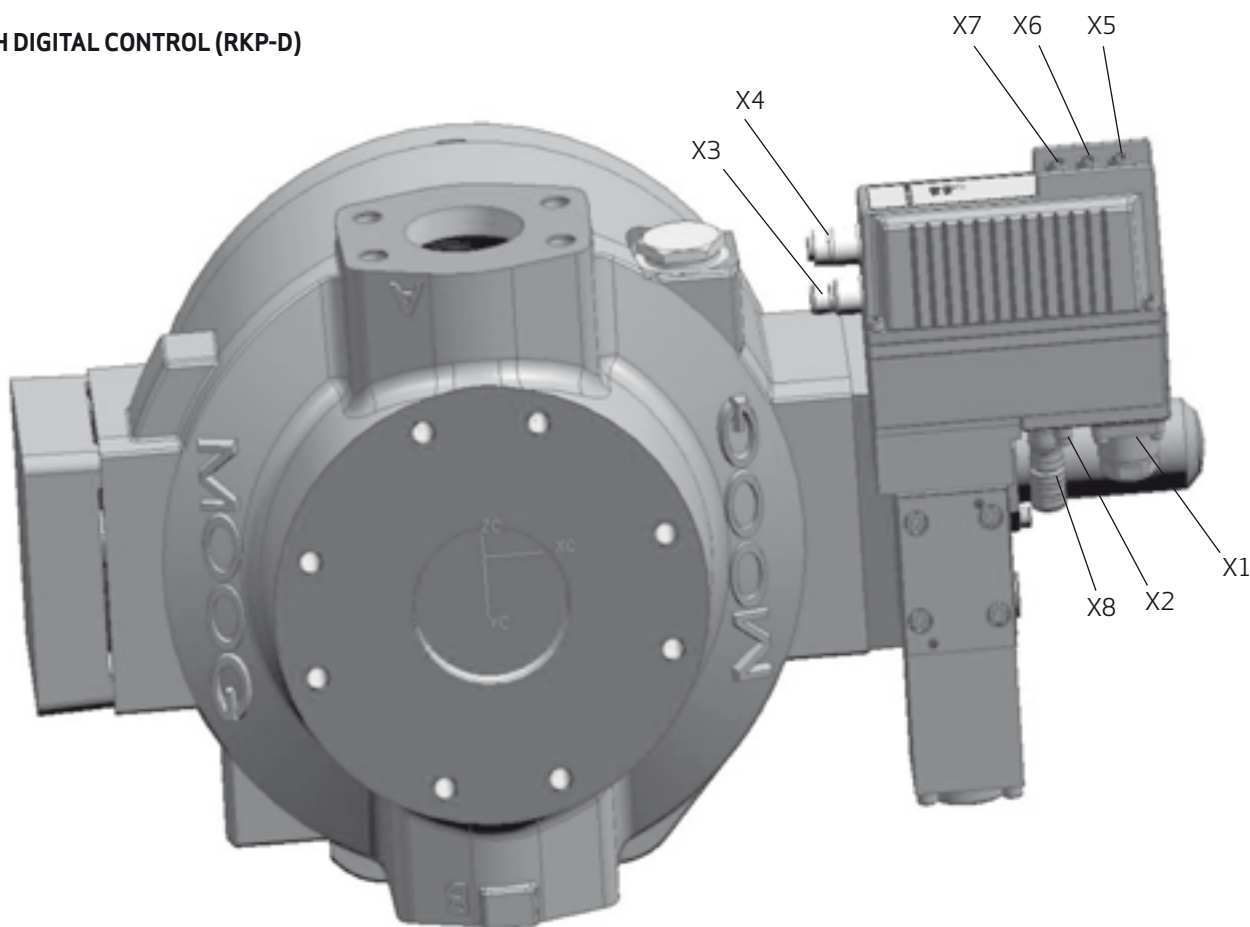
10. ELECTRO-HYDRAULIC CONTROL WITH DIGITAL ON-BOARD ELECTRONICS, D1 TO D8

- Control p/Q: Analog 0 V – 10 V or using CAN bus
- Pressure controller with 16 selectable parameter sets
- 2 pressure sensors may be connected
- Integrated horse power controller

- Master/slave mode
- Pressure range up to 350 bar constant pressure

For a detailed description and other applications, see catalog for RKP with digital controller (RKP-D).

RKP WITH DIGITAL CONTROL (RKP-D)



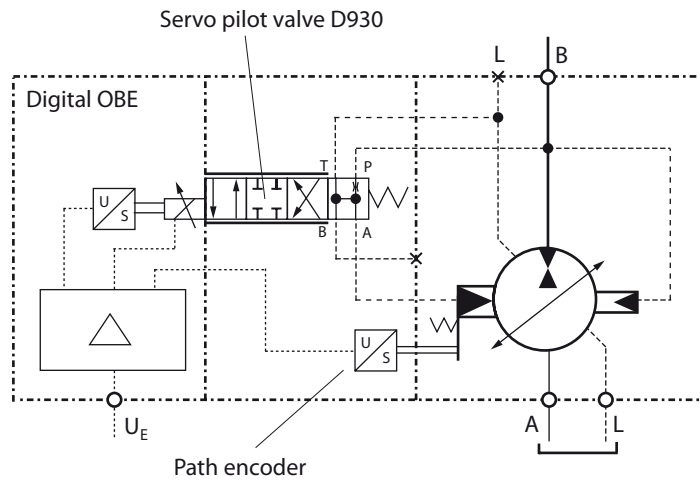
No.	Description	Type
X1	Main connector	11+PE EN 175201 Part 804 12-pole pin contact
X2	LocalCAN (optional) for master/slave mode	M8 x 1 3-pole pin contact
X3	CAN-In	M12x1 5-pole pin contact
X4	CAN-Out	M12x1 5-pole socket contact
X5	Pressure sensor 2	M8 x 1 4-pole socket contact
X6	Pressure sensor 1	M8 x 1 4-pole socket contact
X7	Analog selection of parameter sets	M8 x 1 4-pole socket contact
X8	LVDT	M12x1 5-pole socket contact

Shielding of valve and LVDT: IP67 (with connected and locked receptacles respectively)

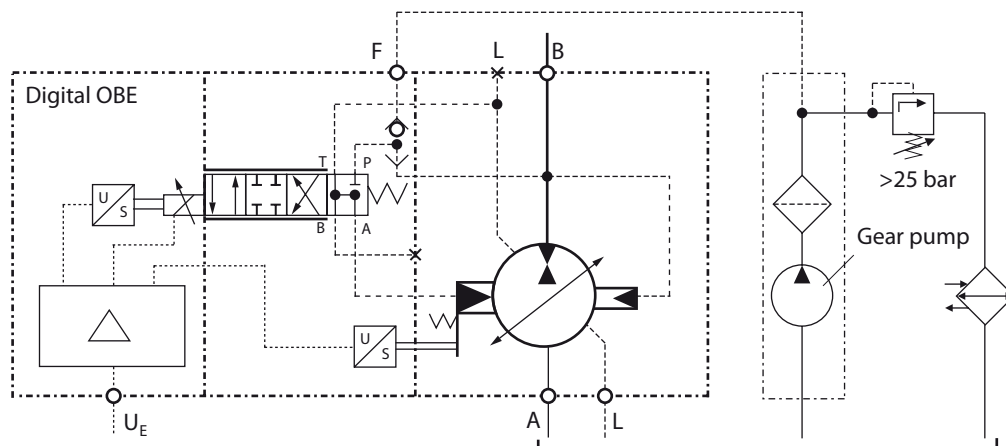
APPENDIX A – COMPENSATOR OPTIONS

ELECTRO-HYDRAULIC CONTROL WITH DIGITAL ON-BOARD ELECTRONICS, D

INTERNAL PRESSURE SUPPLY D1



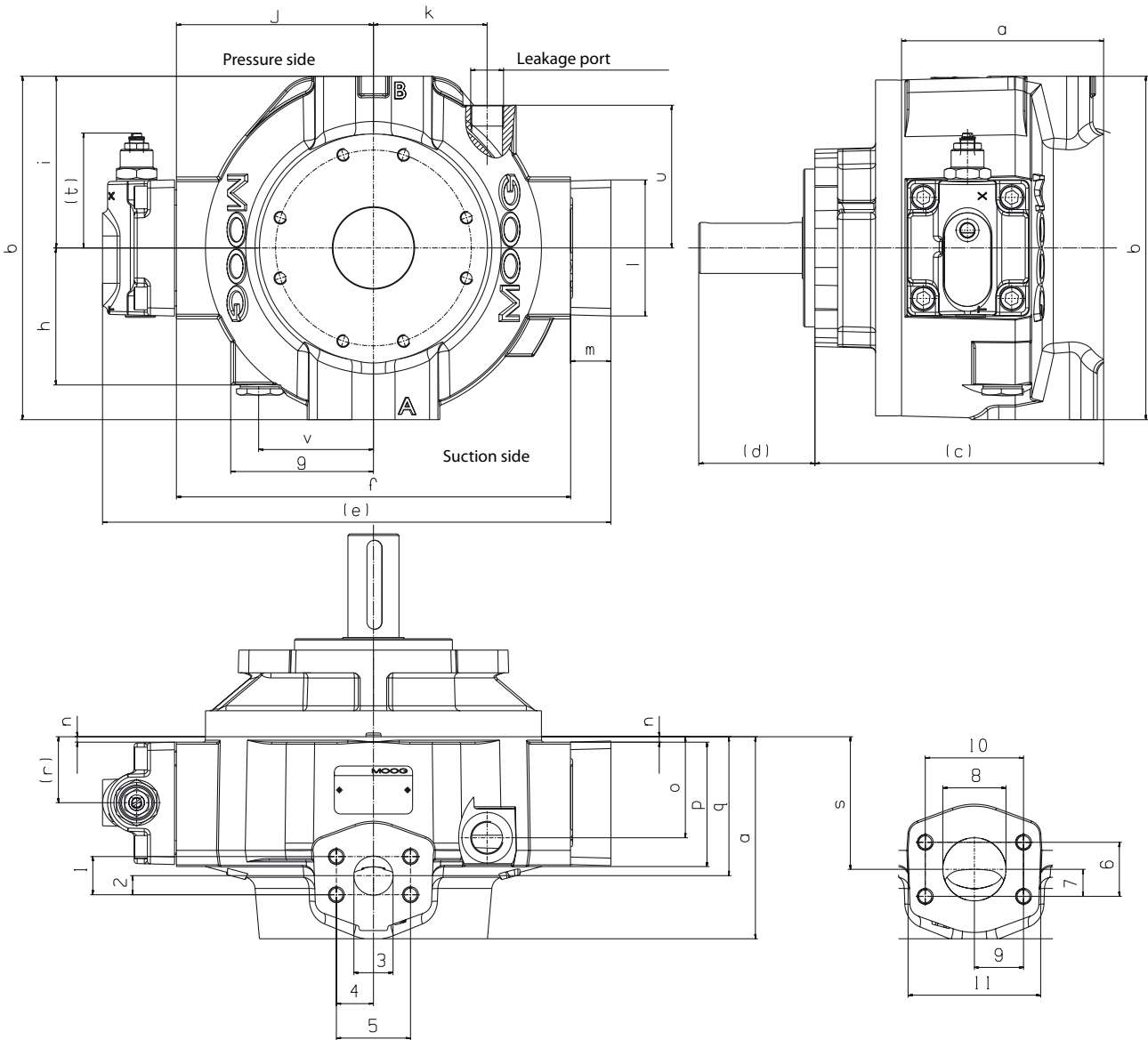
EXTERNAL PRESSURE SUPPLY D2



For more information on electro-hydraulically adjustable pumps, see catalog "RKP with digital control" (RKP-D).

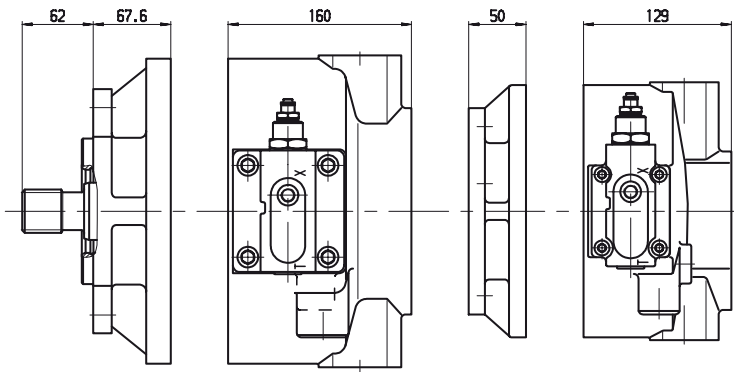
RADIAL PISTON PUMPS RKP-II

APPENDIX B – TECHNICAL DRAWINGS HOUSINGS RKP-II 63 - 100



Caution
Change of rotation not possible.

MULTIPLE ARRANGEMENT EXAMPLE RKP 63 + 32



RADIAL PISTON PUMPS RKP-II

APPENDIX B – TECHNICAL DRAWINGS HOUSINGS RKP-II 19 - 140

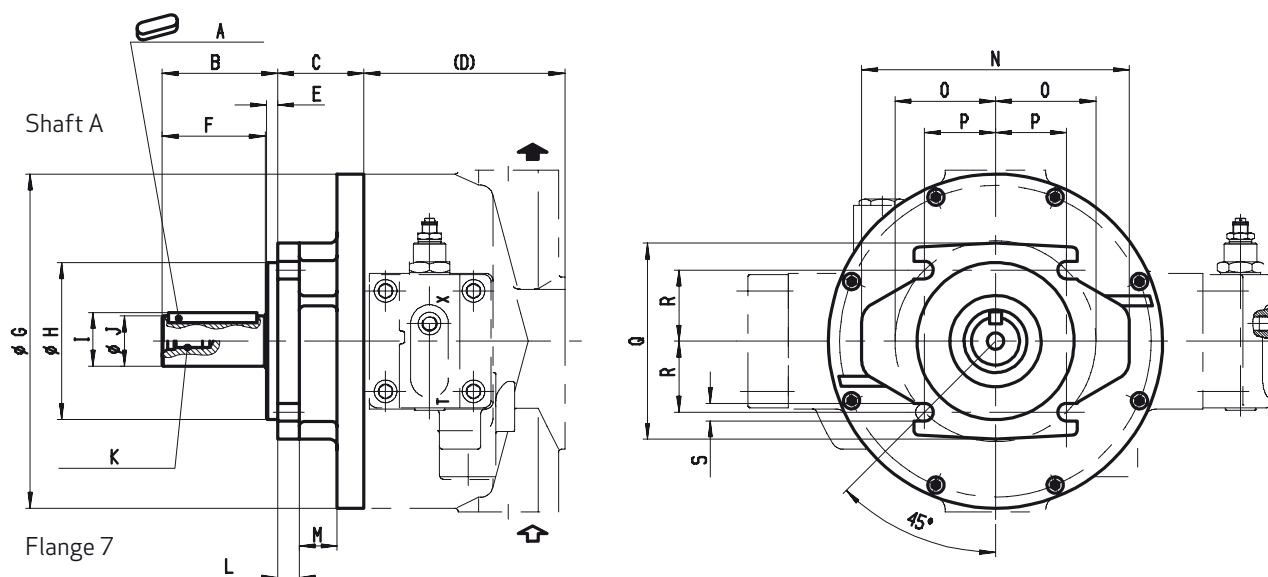
		RKP 19		RKP 32/45		RKP 63/80/100		RKP 140
Length Height	a	104.00		129.00		160.00		173.50
	b	181.00		225.00		272.00		320.00
Width	(c)	163.10		103.00		228.60		–
	(d)	46.10		78.00		92.00		–
	(e)	290.50		319.30		402.50		483.20
	f	212.00		241.00		312.10		398.40
	g	78.00		97.00		113.00		130.00
	h	83.00		87.00		108.00		130.00
	i	90.50		112.50		136.00		160.00
	j	106.00		120.50		156.00		199.20
	k	56.00		84.00		90.00		–
Leakage port		M18 x 1.5 mm to 13 mm deep		M22 x 1.5 mm to 14 mm deep		M26 x 1.5 mm to 16 mm deep		see flange
	l	80.00		81.40		107.70		109.40
	(m)	26.00		26.00		32 (51.7 at D2, D3, D6)		34.80
	n	1.00		7.50		4.30		5.00
	o	55.00		66.00		80.00		–
	p	70.00		75.50		98.50		114.00
	q	67.00		88.00		110.00		118.00
	(r)	35.00		41.20		52.25		–
	s	67.00		85.00		105.00		118.00
	(t)	max. 103.00		max. 103.00		max. 98.00		–
	u	83.00		87.00		113.00		130.00
	v	56.00		78.00		90.00		–
Pressure port		SAE 3/4" 3000 psi	SAE 3/4" 6000 psi	SAE 1" 3000 psi	SAE 1" 6000 psi	SAE 1 1/4" 3000 psi	SAE 1 1/4" 6000 psi	SAE 1 1/2" 6000 psi
	1	22.20	23.90	26.20	27.80	30.16	31.70	36.50
	2	11.10	11.95	13.10	13.90	15.08	15.85	18.25
	3	19.00	19.00	25.00	25.00	26.00	31.00	38.00
	4	23.81	25.40	26.20	28.60	29.37	33.34	39.65
	5	47.60	50.80	52.40	57.20	58.74	66.68	79.30
	12	M10 16 mm deep	M10 16 mm deep	M10 16 mm deep	M12 21 mm deep	M12 21 mm deep	M14 24 mm deep	M16 25.5 mm deep
		SAE 3/4" 3000 psi	SAE 3/4" 6000 psi	SAE 1 1/2" 3000 psi		SAE 2" 3000 psi		SAE 2 1/2" 3000 psi
Suction port	6	22.20	23.90	35.70		42.80		50.80
	7	11.10	11.95	17.85		21.40		25.40
	8	19.00	19.00	38.00		50.00		62.00
	9	23.81	25.40	34.95		38.90		44.45
	10	47.60	50.80	69.90		77.80		88.90
	11	71.00	71.00	98.00		105.00		117.50
	13	M10 16 mm deep	M10 16 mm deep	M12 24 mm deep		M12 22.5 mm deep		M12 22 mm deep

() = as shown with flange A7 and with compensator, F, H, J, R and without Q_{max} limiting. All dimensions in mm; 25.4 mm = 1 inch

RADIAL PISTON PUMPS RKP-II

APPENDIX B – TECHNICAL DRAWINGS DRIVE FLANGES RKP-II 19 - 100

DRIVE FLANGES A7A



Key to DIN 6885

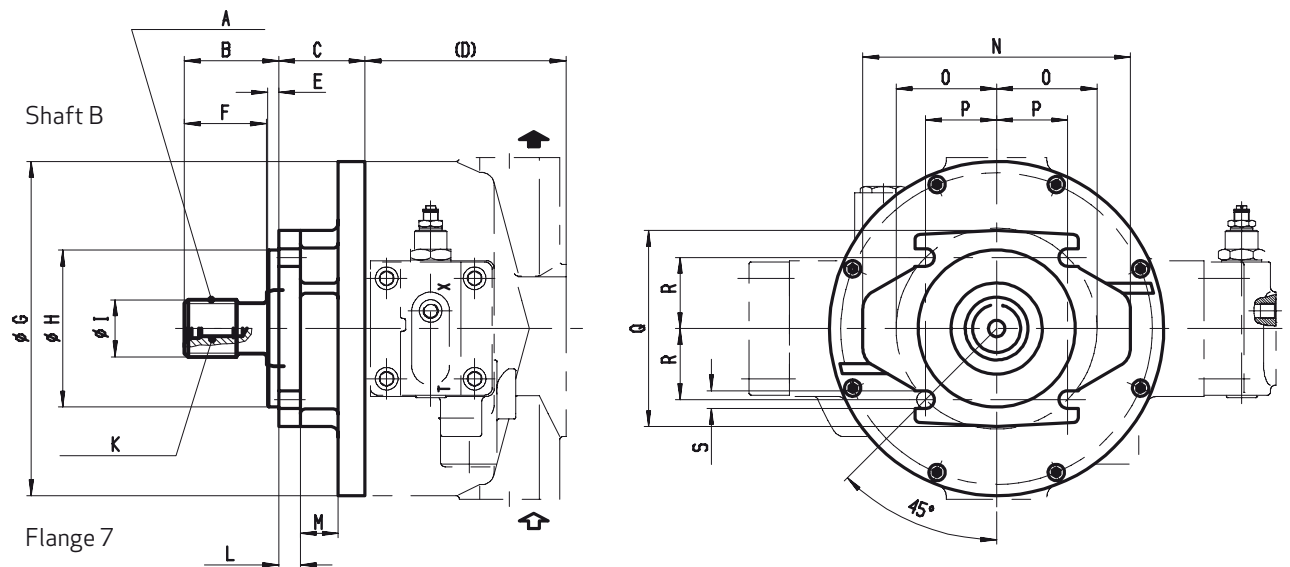
ISO mounting flange to DIN ISO 3019/2
(metric dimensions)

	RKP 19	RKP 32/45	RKP 63/80/100
A	A 8 x 7 x 36 DIN 6885	A 10 x 8 x 50 DIN 6885	A 12 x 8 x 70 DIN 6885
B	52.00	68.00	92.00
C	58.10	64.10	68.60
(D)	104.00	129.00	160.00
E	9.00	9.00	9.00
F	42.00	58.00	82.00
G	177.00	220.00	267.00
H	100.00 - 0.054	125.00 - 0.063	125.00 - 0.063
I	27.75	34.75	42.75
J	25.00 + 0.009 / - 0.004	32.00 + 0.018 / + 0.002	40.00 + 0.018 / + 0.002
K	M8 22 mm deep	M10 22 mm deep	M12 32 mm deep
L	11.20	17.20	17.20
M	30.00	30.00	30.00
N	174.00	213.00	213.00
O	62.50	80.00	80.00
P	44.20	56.58	56.58
Q	126.00	156.00	156.00
R	44.20	56.58	56.58
S	11.00	14.00	14.00

RADIAL PISTON PUMPS RKP-II

APPENDIX B – TECHNICAL DRAWINGS DRIVE FLANGES RKP-II 19 - 100

DRIVE FLANGES B7



Involute spline to DIN 5480

(obligatory with multiple arrangement of RKP and SAE-B)

ISO mounting flange to DIN ISO 3019/2

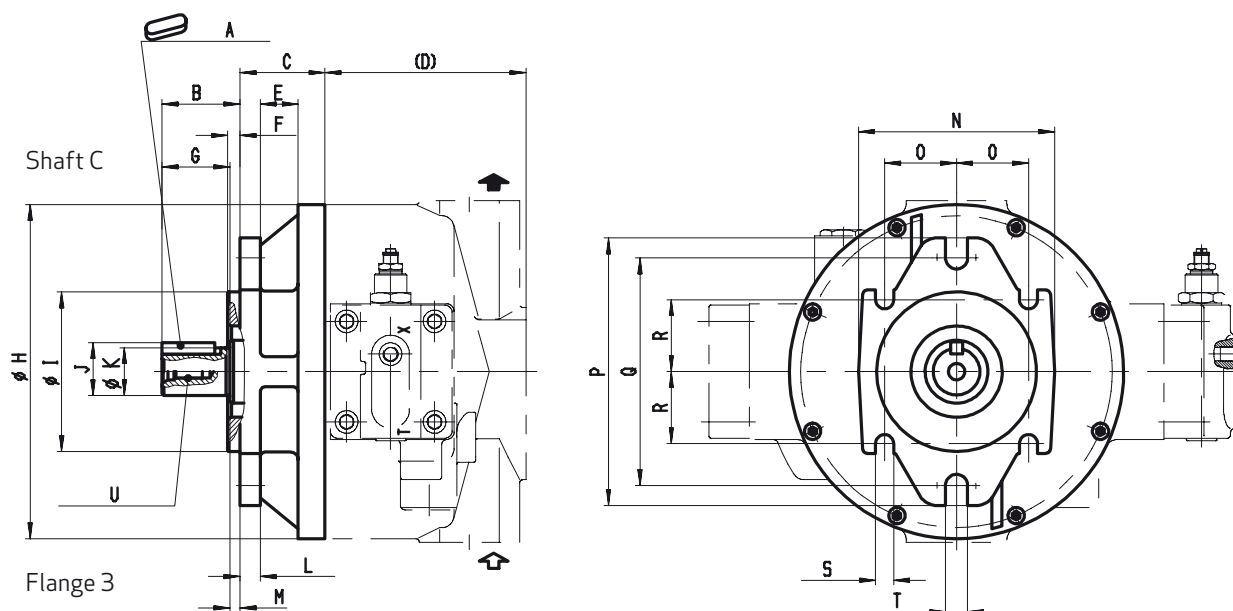
(metric dimensions)

	RKP 19	RKP 32/45	RKP 63/80/100
A	W25 x 1.25 x 30 x 18 x 8f DIN 5480	W32 x 2 x 30 x 14 x 8f DIN 5480	W40 x 2 x 30 x 18 x 8f DIN 5480
B	42.00	46.00	54.00
C	58.10	64.10	68.60
(D)	104.00	129.00	160.00
E	9.00	9.00	9.00
F	32.00	36.00	44.00
G	177.00	220.00	267.00
H	100.00 - 0.054	125.00 - 0.063	125.00 - 0.063
I	25.00	32.00	40.00
K	M8 22 mm deep	M10 22 mm deep	M12 32 mm deep
L	11.20	17.20	17.20
M	30.00	30.00	30.00
N	174.00	213.00	213.00
O	62.50	80.00	80.00
P	44.20	56.58	56.58
Q	126.00	156.00	156.00
R	44.20	56.58	56.58
S	11.00	14.00	14.00

RADIAL PISTON PUMPS RKP-II

APPENDIX B – TECHNICAL DRAWINGS DRIVE FLANGES RKP-II 19 - 100

DRIVE FLANGES C3



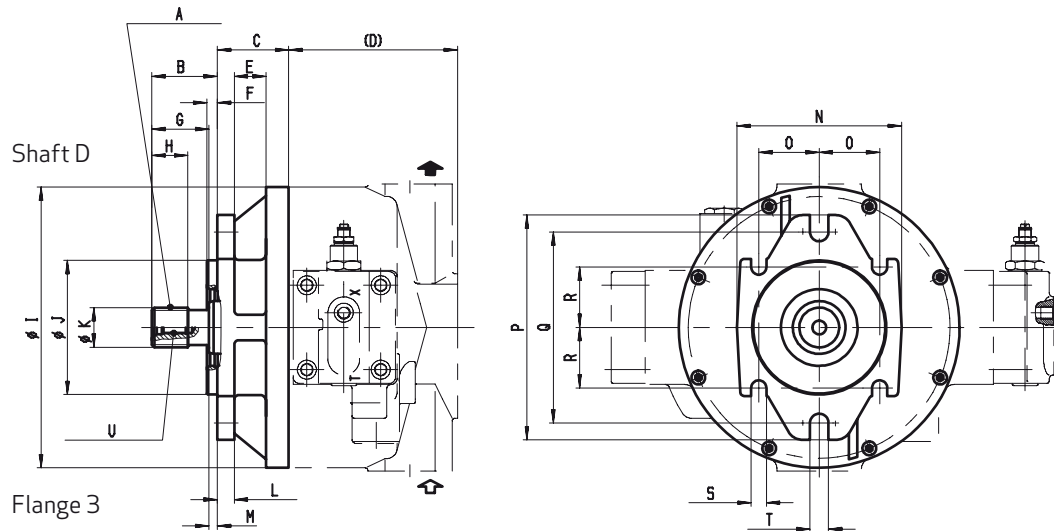
Key to SAE standard
SAE mounting flange to DIN ISO 3019/1
(imperial dimensions)

	RKP 19	RKP 32/45	RKP 63/80/100
A	6.35 x 6.35 x 25.4	7.94 x 7.94 x 32.0	9.53 x 9.53 x 42.0
B	46.10	57.50	62.00
C	59.10	63.10	67.60
(D)	104.00	129.00	160.00
E	30.00	30.00	30.00
F	8.00	10.00	10.00
G	36.70	46.00	54.00
H	177.00	220.00	267.00
I	101.60 - 0.05	127.00 - 0.05	127.00 - 0.05
J	28.09	35.21	42.27
K	25.40 - 0.05	31.75 - 0.05	38.10 - 0.05
L	12.20	16.20	16.20
M	9.40	11.50	8.00
N	126.00	156.00	156.00
O	45.00	57.25	57.25
P	174.00	213.00	213.00
Q	146.00	181.00	181.00
R	45.00	57.25	57.25
S	14.40	14.40	14.40
T	14.40	17.60	17.60
U	3/8"-16UNC-2B 22 mm deep	3/8"-16UNC-2B 22 mm deep	7/16"-14UNC-2B 32 mm deep

RADIAL PISTON PUMPS RKP-II

APPENDIX B – TECHNICAL DRAWINGS DRIVE FLANGES RKP-II 19 - 100

DRIVE FLANGES D3



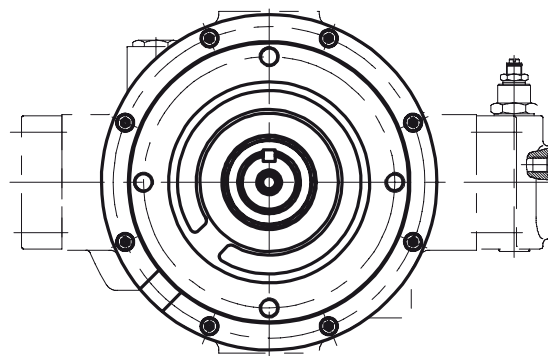
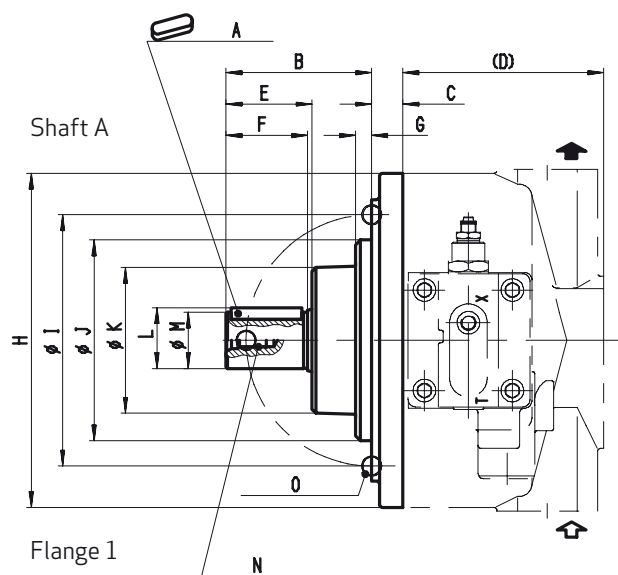
Involute spline to SAE 744 C
(obligatory with multiple arrangement of RKP and SAE-B)
SAE mounting flange to ISO 3019/1
(imperial dimensions)

	RKP 19	RKP 32/45	RKP 63/80/100
A	ANSI B92.1-1970 Class 5 30PA. 15T, 16/32DP Flat root side fit	ANSI B92.1-1970 Class 5 30PA. 14T, 12/24DP Flat root side fit	ANSI B92.1-1970 Class 5 30PA. 17T, 12/24DP Flat root side fit
B	46.00	56.00	62.00
C	59.10	63.10	67.60
(D)	104.00	129.00	160.00
E	30.00	30.00	30.00
F	8.00	10.00	10.00
G	38.00	48.00	54.00
H	23.00	29.00	34.00
I	177.00	220.00	267.00
J	101.60	127.00	127.00
K	25.20	31.50	37.70
L	12.20	16.20	16.20
M	8.00	8.00	8.00
N	126.00	156.00	156.00
O	45.00	57.25	57.25
P	174.00	213.00	213.00
Q	146.00	181.00	181.00
R	45.00	57.25	57.25
S	14.40	14.40	14.40
T	14.40	17.60	17.60
U	3/8"-16UNC-2B 22 mm deep	3/8"-16UNC-2B 22 mm deep	7/16"-14UNC-2B 32 mm deep

RADIAL PISTON PUMPS RKP-II

APPENDIX B – TECHNICAL DRAWINGS DRIVE FLANGES RKP-II 19 - 100

FLANGES A1



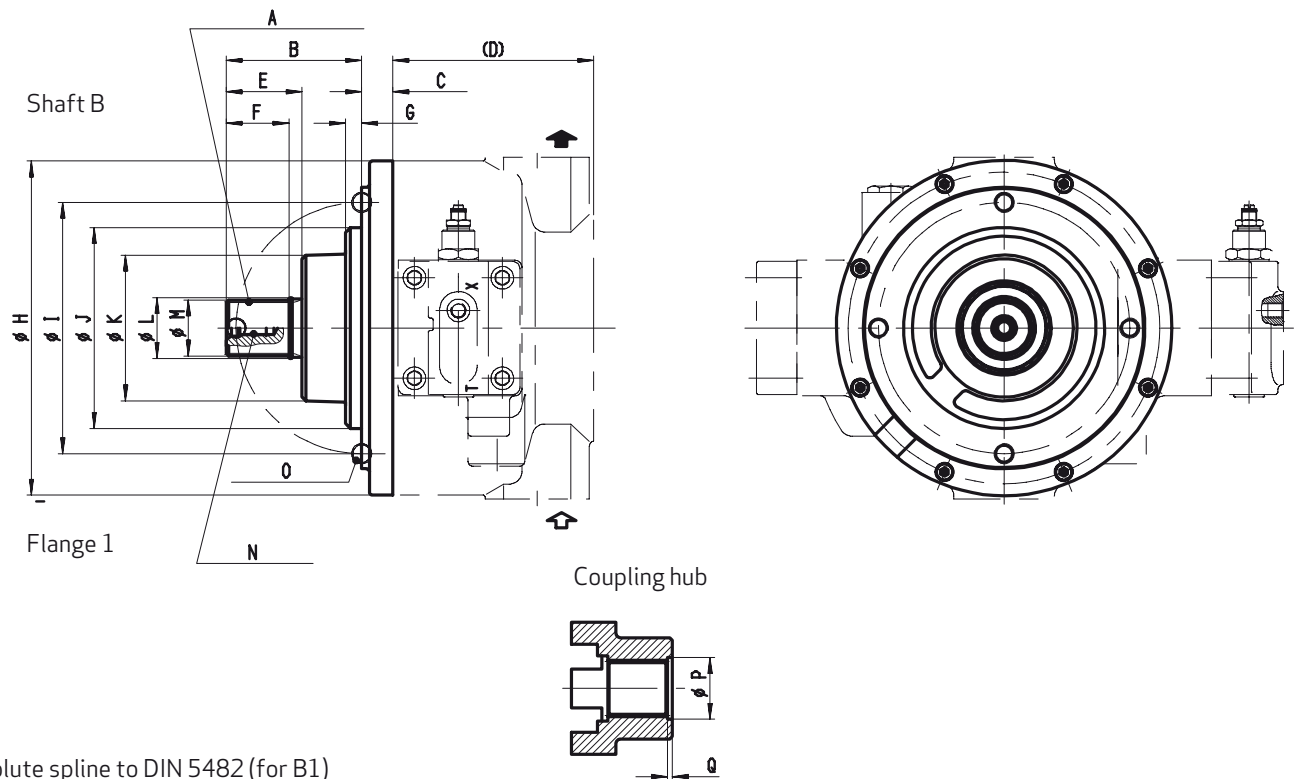
Key to DIN 6885
Metric round flange

	RKP 19	RKP 32/45	RKP 63/80/100
A	A 8 x 7 x 32 DIN 6885	A 10 x 8 x 45 DIN 6885	A 14 x 9 x 56 DIN 6885
B	70.70	94.50	116.00
C	17.10	18.10	24.70
(D)	104.00	129.00	160.00
E	42.90	57.50	68.50
F	41.20	55.00	65.00
G	11.40	11.00	13.00
H	177.00	220.00	267.00
I	125.00 ± 0.15	160.00 ± 0.15	200.00 ± 0.15
J	100.00 - 0.036 / - 0.09	125.00 - 0.043 / - 0.106	160.00 - 0.043 / - 0.106
K	79.00	101.00	116.00
L	30.75	37.85	48.40
M	28.00 - 0.013	35.00 - 0.016	45.00 - 0.016
N	M10 22 mm deep	M10 22 mm deep	M12 32 mm deep
O	M10 15 mm deep	M12 16 mm deep	M16 23 mm deep

RADIAL PISTON PUMPS RKP-II

APPENDIX B – TECHNICAL DRAWINGS DRIVE FLANGES RKP-II 19 - 100

FLANGES B1



Involute spline to DIN 5482 (for B1)
(obligatory with multiple arrangement of RKP and SAE-B)
Metric round flange

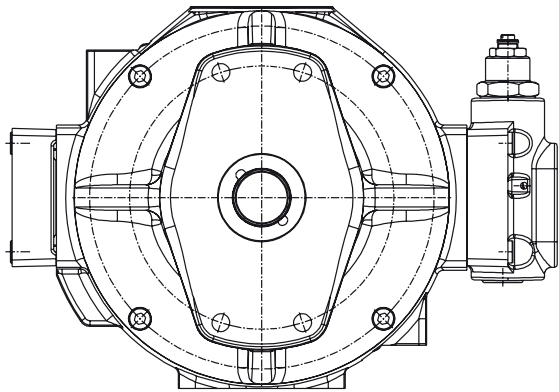
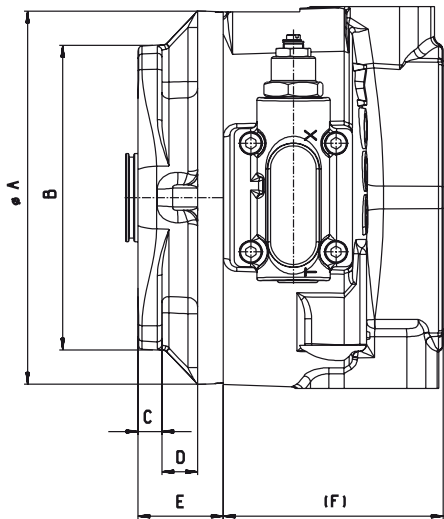
	RKP 19	RKP 32/45	RKP 63/80/100
A	B 28 x 25 e9 DIN 5482	B 35 x 31 e9 DIN 5482	B 45 x 41 e9 DIN 5482
B	72.60	95.50	107.90
C	17.10	18.10	24.70
(D)	104.00	129.00	160.00
E	44.80	58.50	60.40
F	30.00	40.00	50.00
G	11.40	11.00	13.00
H	177.00	220.00	267.00
I	125.00 ± 0.15	160.00 ± 0.15	200.00 ± 0.15
J	100.00 - 0.090 / - 0.036	125.00 - 0.043 / - 0.106	160.00 - 0.043 / - 0.106
K	79.00	101.00	116.00
L	30.80 ± 0.25	38.50 ± 0.25	48.45 ± 0.25
M	27.50 - 0.130	34.44 - 0.160	44.50 - 0.160
N	M10 22 mm deep	M10 22 mm deep	M12 32 mm deep
O	M10 15 mm deep	M12 16 mm deep	M16 23 mm deep
P	31.30 + 0.20	39.00 + 0.20	49.00 + 0.20
Q	4.00	4.00	4.00

RADIAL PISTON PUMPS RKP-II

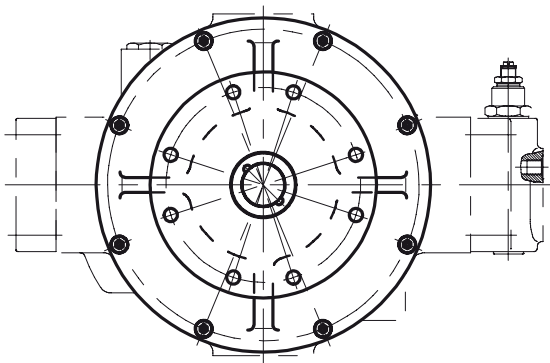
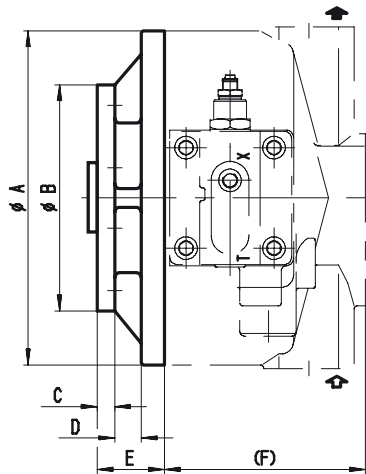
APPENDIX B – TECHNICAL DRAWINGS DRIVE FLANGES RKP-II 19 - 100

INTERMEDIATE FLANGE XX (RKP-RKP)

RKP 19/32/45



RKP 63/80/100



	RKP 19	RKP 32/45	RKP 63/80/100
A	177.00	220.00	266.00
B	180.00	180.00	180.00
C	14.00	14.00	14.00
D	23.50	21.00	21.00
E	50.00	50.00	53.50
(F)	104.00	129.00	160.00

RADIAL PISTON PUMPS RKP-II

APPENDIX B – TECHNICAL DRAWINGS COMPENSATORS RKP-II 19 - 100

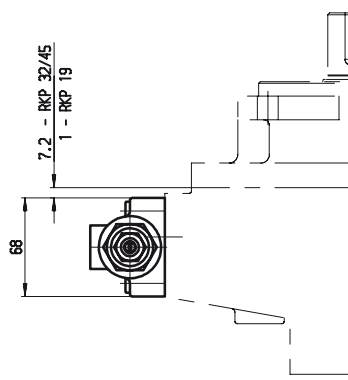
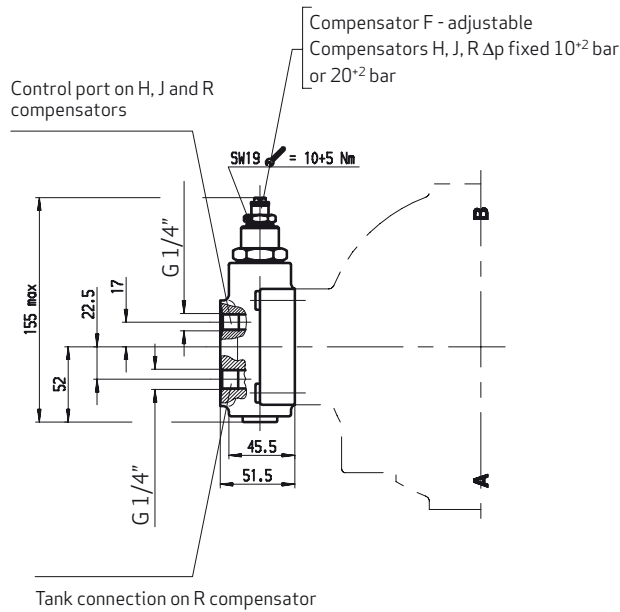
ADJUSTABLE PRESSURE COMPENSATOR F1, F2

REMOTE PRESSURE COMPENSATOR H1

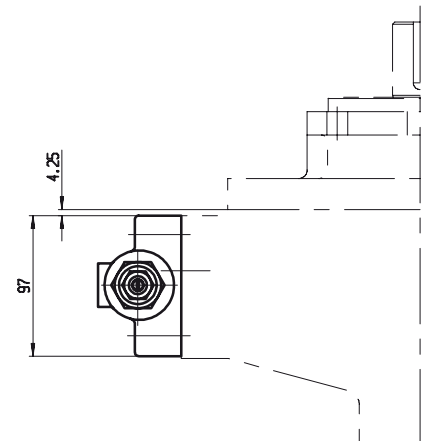
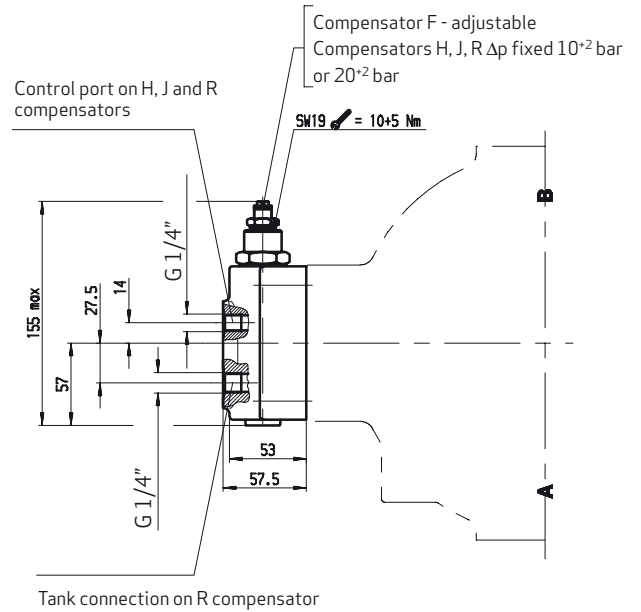
COMBINED PRESSURE AND FLOW COMPENSATOR J1, J2

PRESSURE AND FLOW CONTROL WITH P-T CONTROL NOTCH R1

RKP 19/32/45



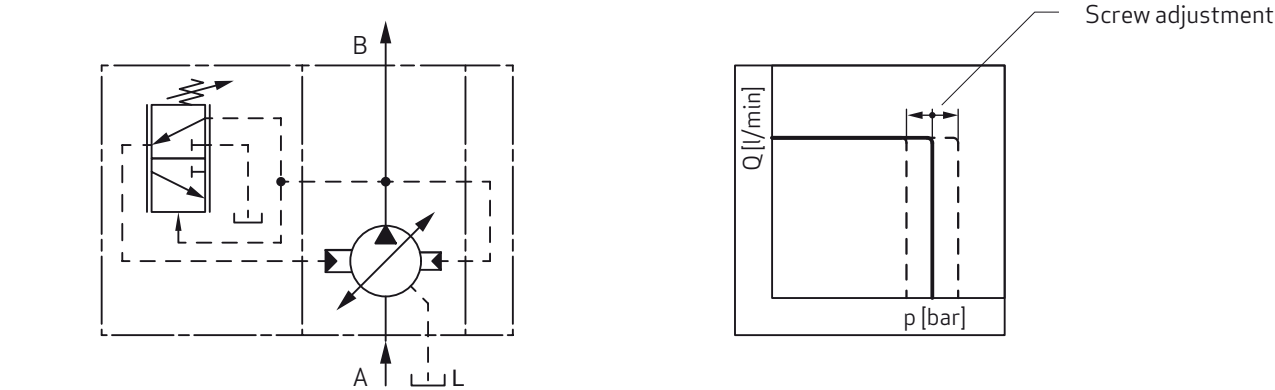
RKP 63/80/100



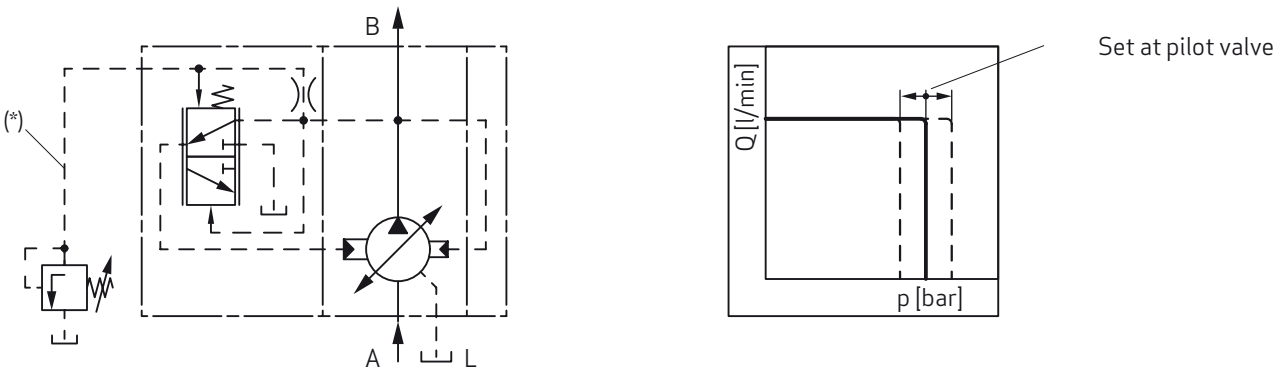
RADIAL PISTON PUMPS RKP-II

APPENDIX B – TECHNICAL DRAWINGS COMPENSATOR RKP-II 19-100

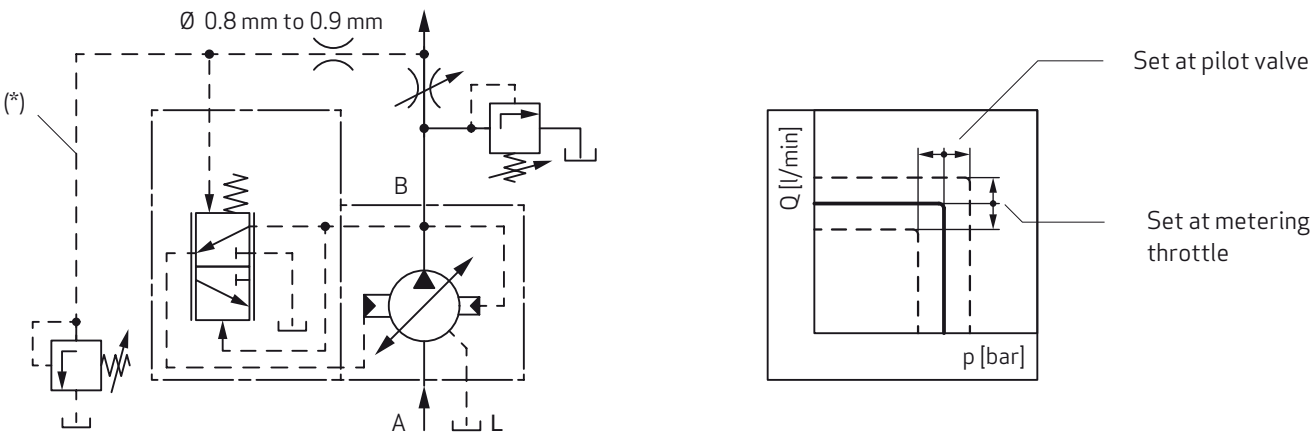
APPENDIX B – TECHNICAL DRAWINGS COMPENSATORS RKP-II 19 - 100



REMOTE PRESSURE COMPENSATOR H1



COMBINED PRESSURE AND FLOW COMPENSATOR J1, J2

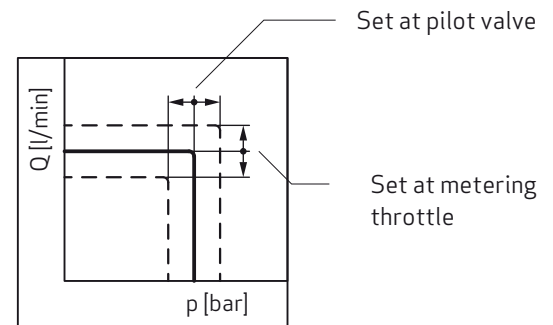


When high dynamics are required for flow control, adjust orifice and control line accordingly.

* Hose recommendation for control line

RKP 19	DN 6
RKP 32, RKP 45	DN 8
RKP 63, RKP 80, RKP 100	DN 10
l = 800 mm	

APPENDIX B – TECHNICAL DRAWINGS COMPENSATORS RKP-II 19 - 100



		D1 [mm]	D2 [mm]
RKP 19 to 45	DN 6	0.9	1.2
RKP 63 to 100	DN 8	0.9	1.2
I = 800 mm			

The tank line of the compensator must not be combined with the drain line of the pump.

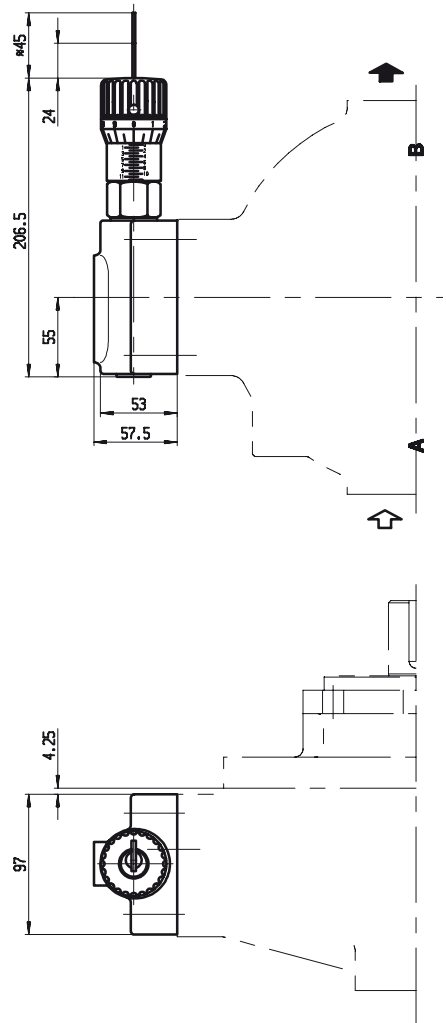
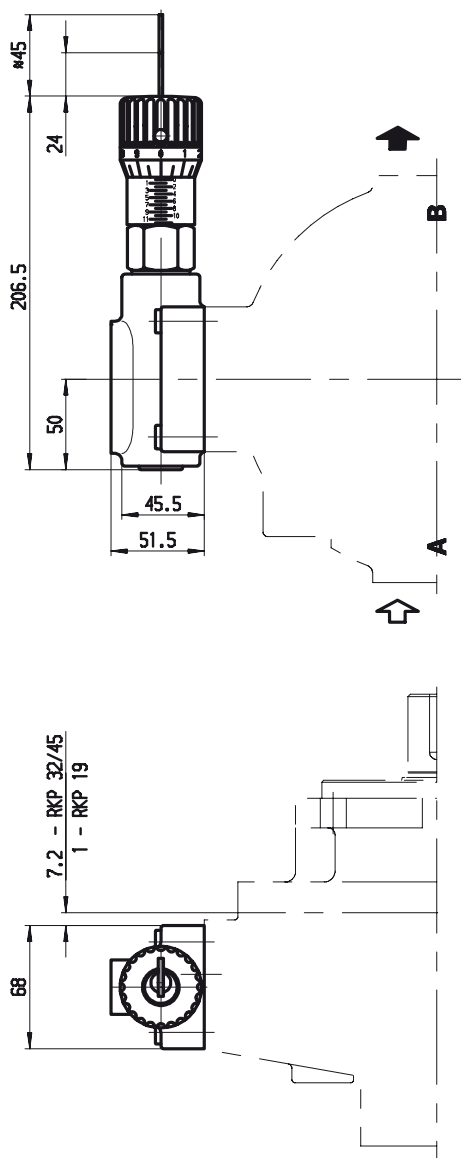
RADIAL PISTON PUMPS RKP-II

APPENDIX B – TECHNICAL DRAWINGS COMPENSATORS RKP-II 19 - 100

ADJUSTABLE PRESSURE COMPENSATOR, LOCKABLE KNOB WITH H KEY G1 , G2

RKP 19/32/45

RKP 63/80/100

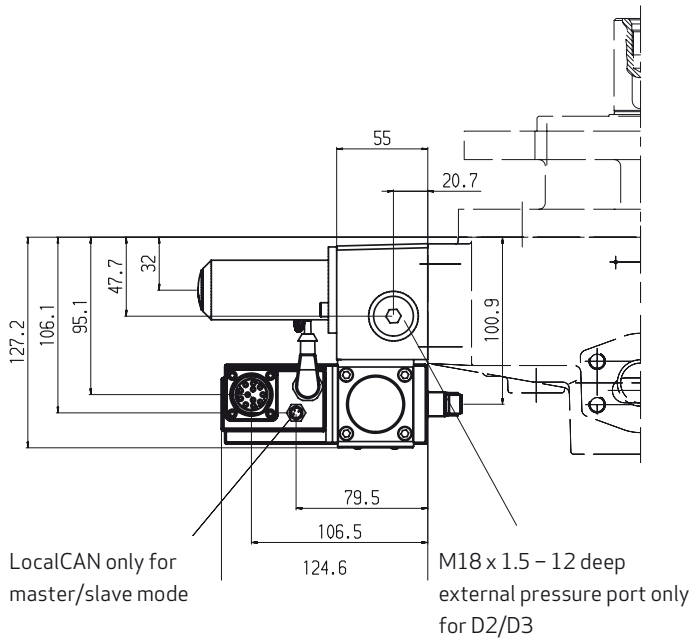
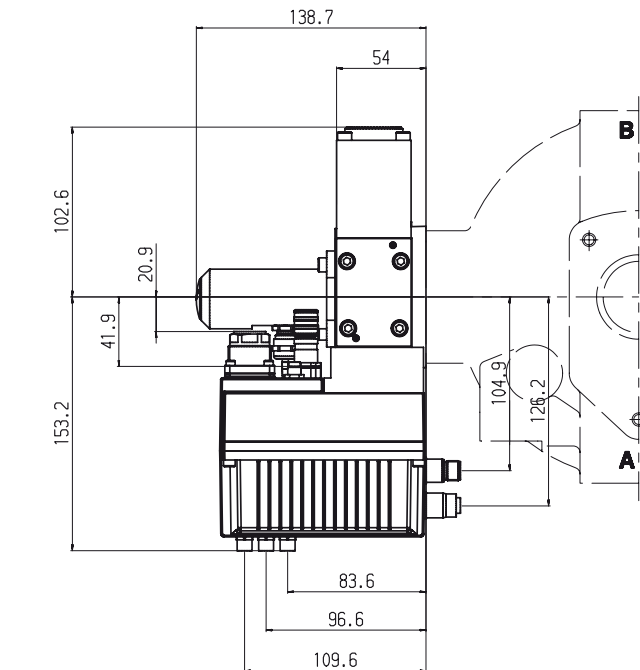


RADIAL PISTON PUMPS RKP-II

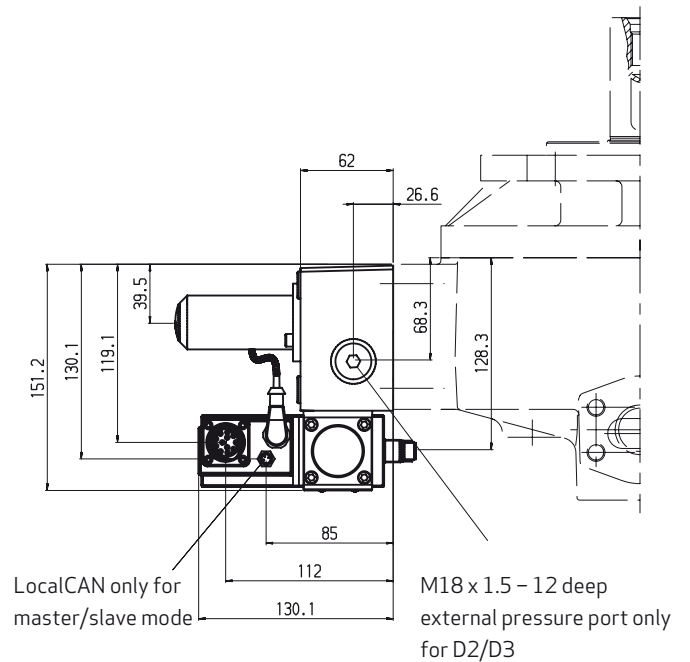
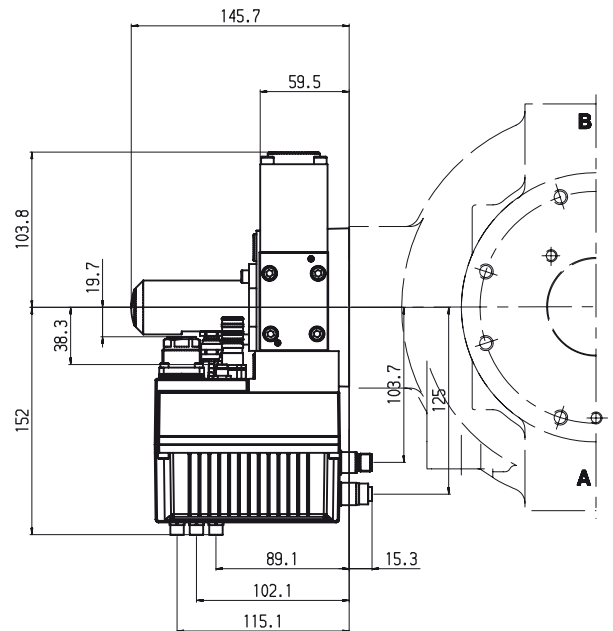
APPENDIX B – TECHNICAL DRAWINGS COMPENSATORS RKP-II 19 - 100

ELECTRO-HYDRAULIC CONTROL WITH DIGITAL ON-BOARD ELECTRONICS D1 TO D8

RKP 19/32/45

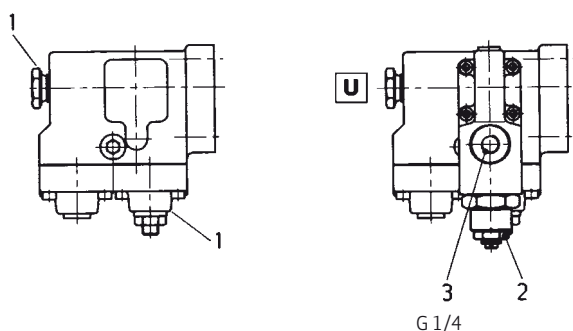
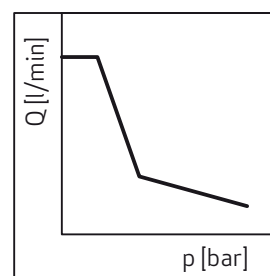
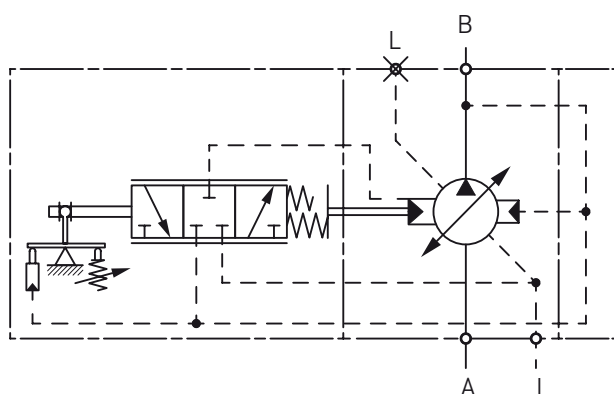
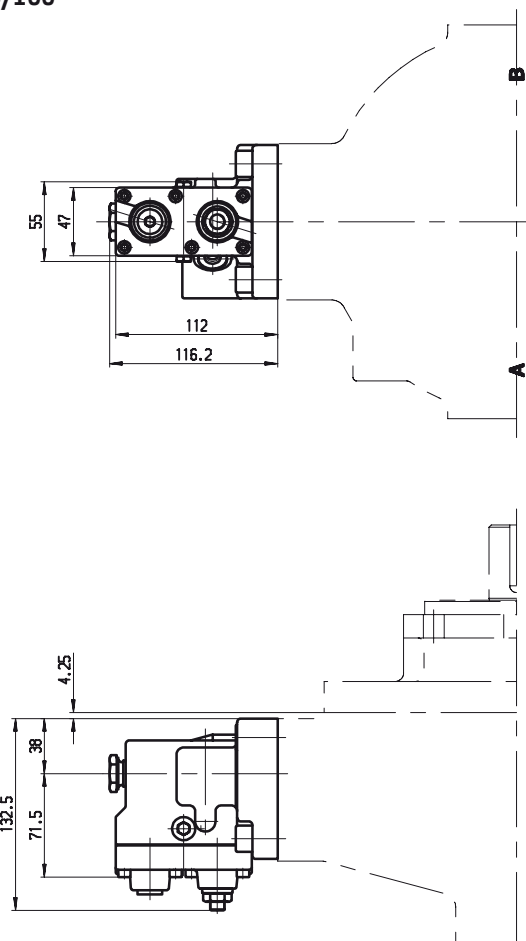


RKP 63/80/100



APPENDIX B – TECHNICAL DRAWINGS COMPENSATORS RKP-II 19 - 100

RKP 32



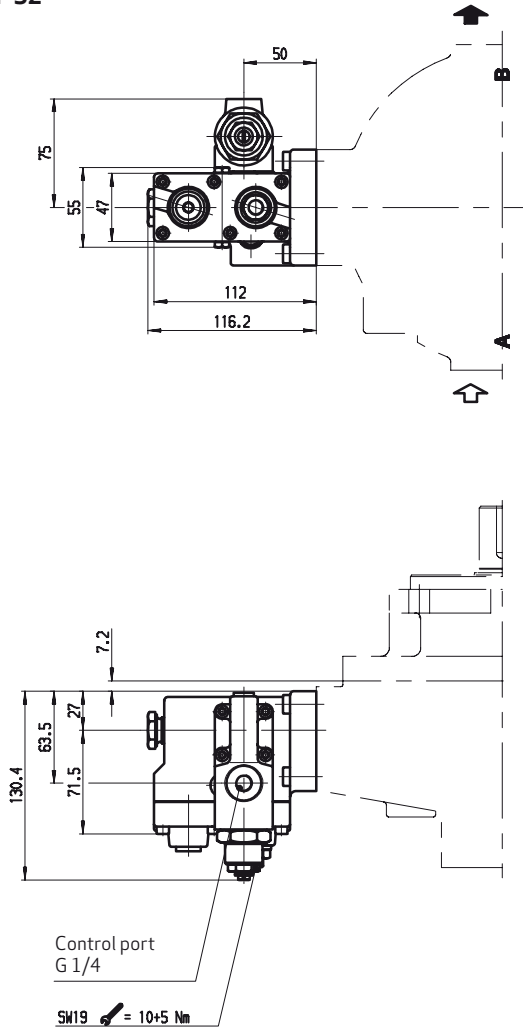
- 1 Horsepower adjustment
(set at factory, do not change)
- 2 Set at factory ($\Delta p = 10^2$ bar)
- 3 Control port
For control line information, see H and J controller details

RADIAL PISTON PUMPS RKP-II

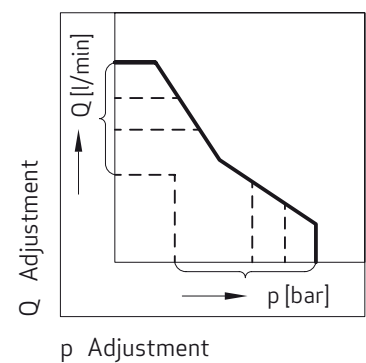
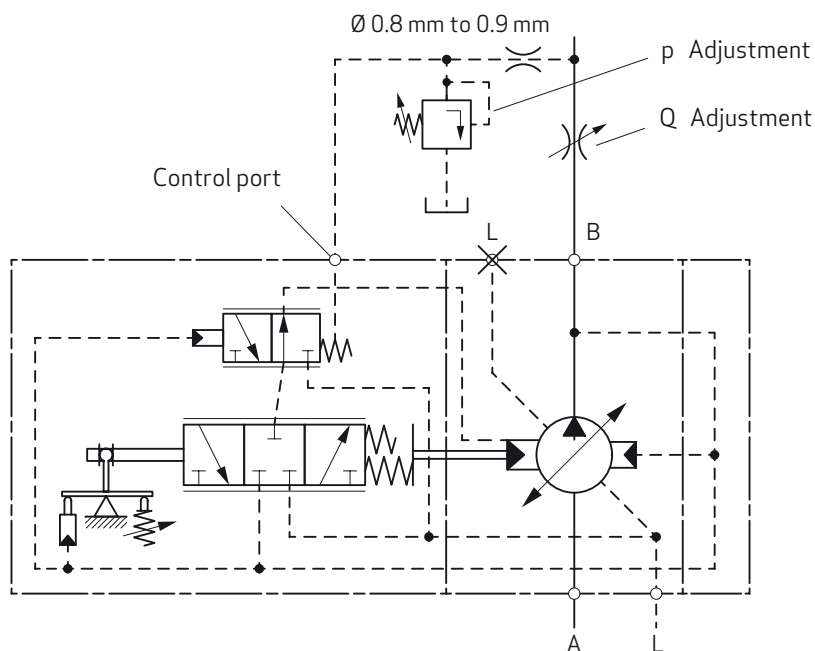
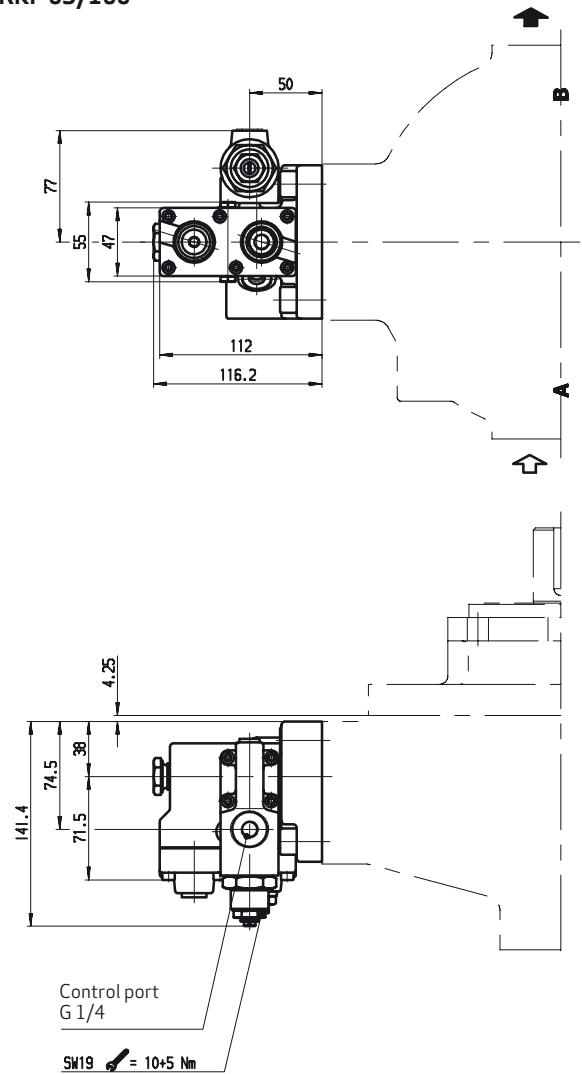
APPENDIX B – TECHNICAL DRAWINGS COMPENSATORS RKP-II 19 - 100

CONSTANT HORSEPOWER CONTROL WITH REMOTE PRESSURE AND FLOW CONTROL S2

RKP 32

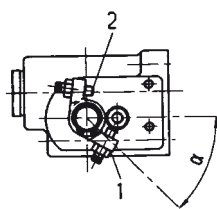


RKP 63/100



APPENDIX B – TECHNICAL DRAWINGS COMPENSATORS RKP-II 19 - 100

RKP 19/32/45



- 1 Zero stroke stop (set at factory)
- 2 End stop / $\pm V_{\max}$ (set at factory)

Technical drawing of the RRP 63/100 roller bearing assembly, showing front and side views with dimensions.

Front View (Top):

- Overall width: 128.5
- Distance from left face to center: 75
- Distance from center to right face: 60
- Distance from left face to bearing center: 45
- Distance from bearing center to right face: 15
- Distance from left face to mounting flange: 16
- Distance from mounting flange to bearing center: 5
- Distance from bearing center to mounting flange: 5
- Mounting flange diameter: $\phi 12$
- Mounting flange radius: R 2.5
- Internal thread: M8-11 deep
- Internal thread angle: $44^\circ - RRP 63$
- Internal thread angle: $56^\circ - RRP 80/100$

Side View (Bottom):

- Overall height: 57
- Distance from bottom face to bearing center: 19
- Distance from bearing center to top face: 4.25
- Bearing center diameter: $\phi 48$
- Bearing center radius: R 70 max.
- Distance from bottom face to mounting flange: 13
- Distance from mounting flange to bearing center: 42

Assembly Information:

- Spline: 15 x 17 DIN 5481
- Roller bearing: RRP 63/100

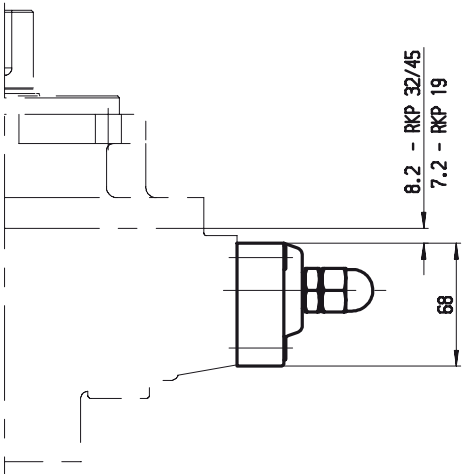
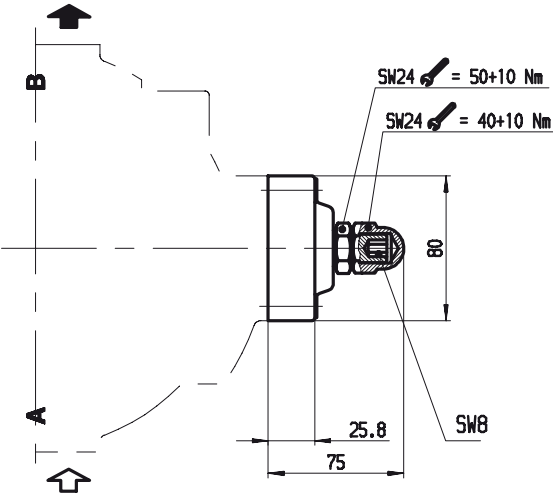
	V [cm³/rev]	19	32	45	63	80	100
	α [°]	44	47	57	44	56	56
Torque M [Nm]	Zero position	1.2			1.6		
	End position	1.6	1.7		2.4	2.6	2.6
	Max.	8					

RADIAL PISTON PUMPS RKP-II

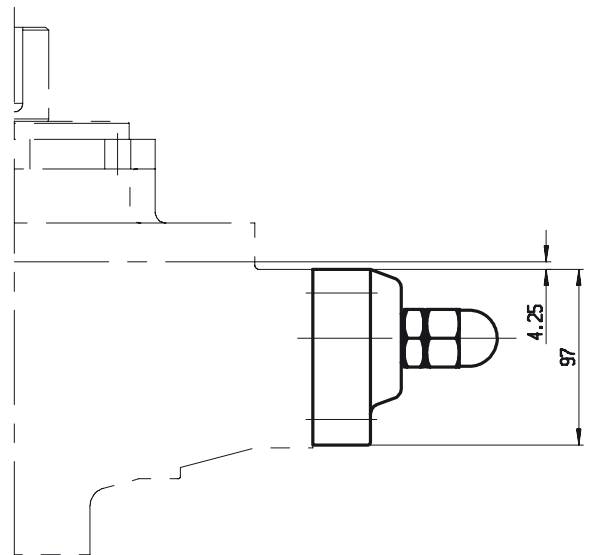
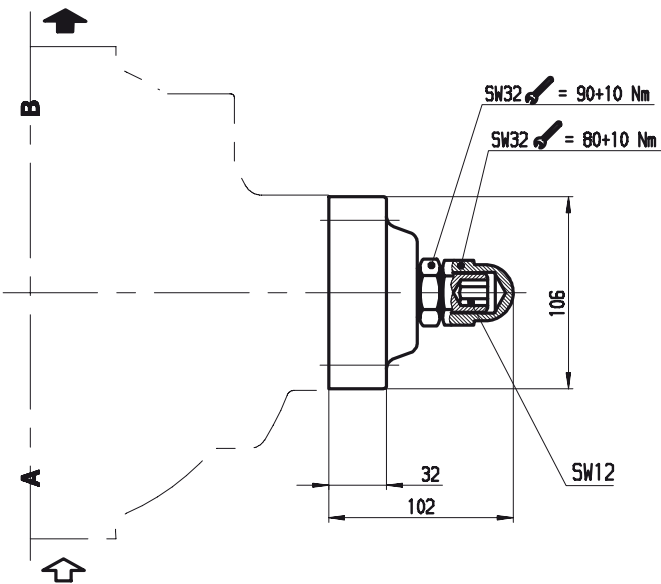
APPENDIX B – TECHNICAL DRAWINGS COMPENSATORS RKP-II 19 - 100

MAXIMUM FLOW LIMITER Y

RKP 19/32/45



RKP 63/80/100

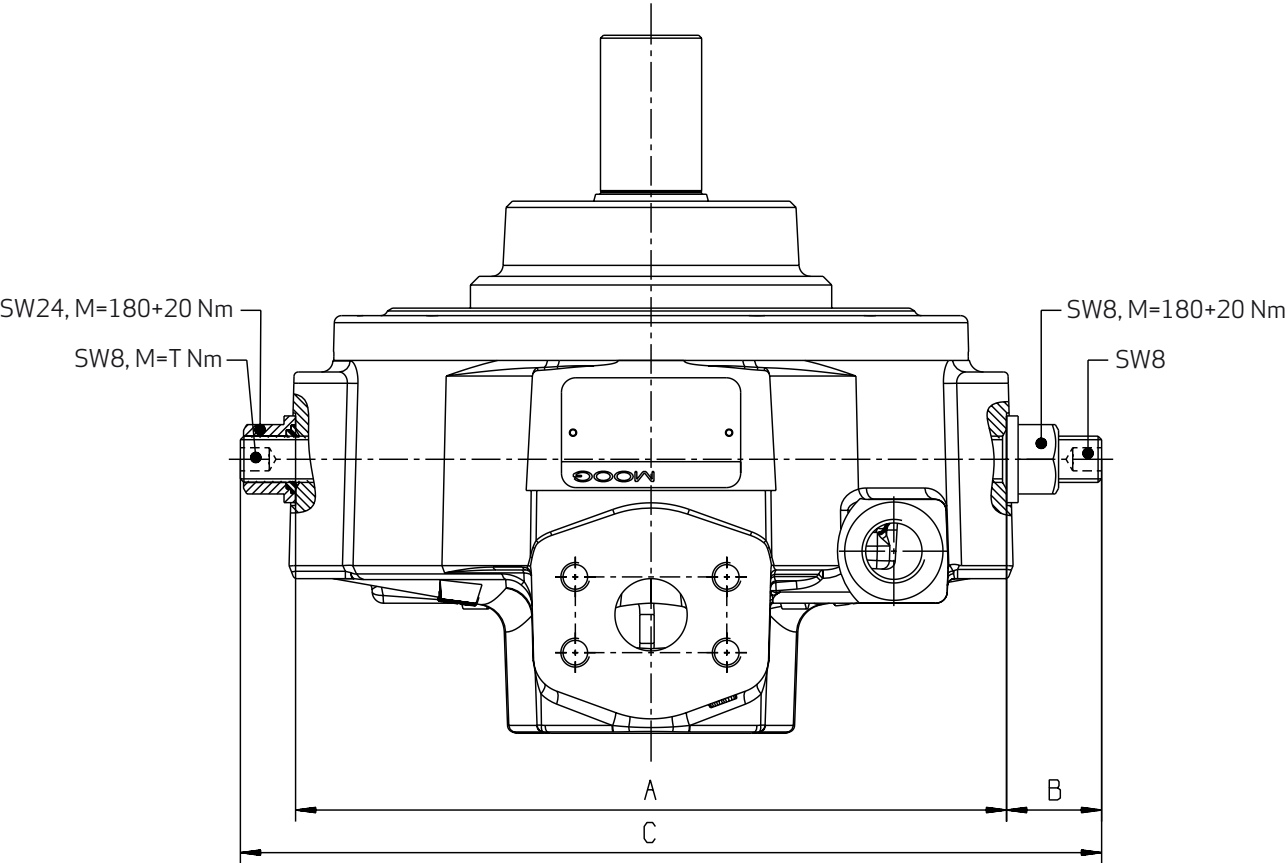


V [cm ³ /rev]	19	32	45	63/80	100
ΔV for 1 mm travel of adjusting screw (pitch 1.5 mm/rev)	3.6	5.6	6.5	8.9	11.3

RADIAL PISTON PUMPS RKP-II
APPENDIX B – TECHNICAL DRAWINGS COMPENSATORS RKP-II 19 - 100

MECHANICAL STROKE ADJUSTMENT B1

RKP 19-100



V [cm³/rev]	19	32	45	63	80	100
A [mm]	212	246	246	312	312	312
B [mm]	32.9	31.8	33.0	40.8	42.7	42.5
C [mm]	267	298	298	379	379	379
T [Nm]	15+5	15+5	15+5	26+4	26+4	26+4
ΔV for 1 mm travel of adjusting screw (pitch 1.5 mm/rev)	3.6	5.6	6.5	8.9	8.9	11.3

Important

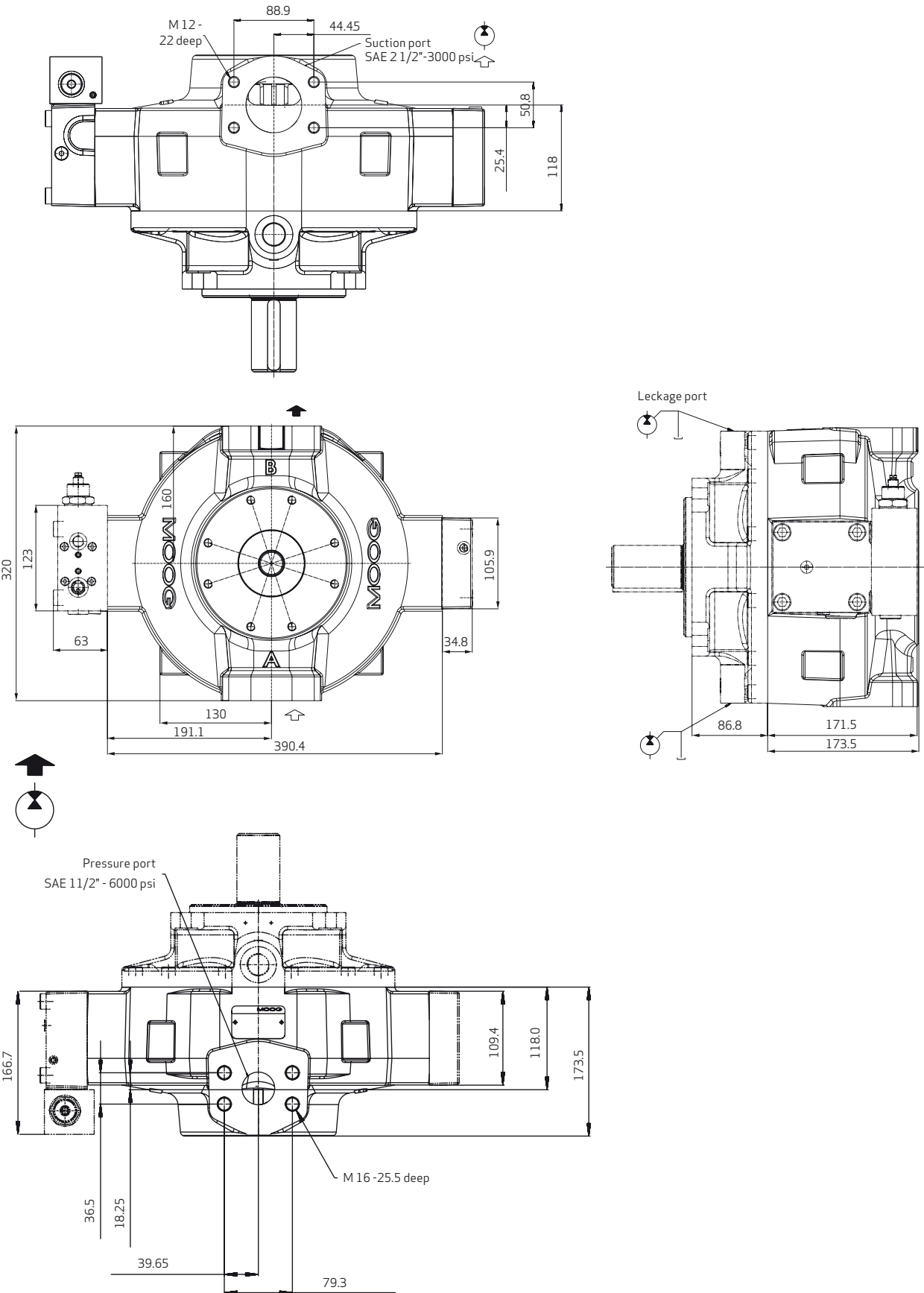
When adjusting for the required delivery, ensure that the stroke ring remains held between the two adjusting screws.

When delivered, the pump is set to v_{max} .

RADIAL PISTON PUMPS RKP-II

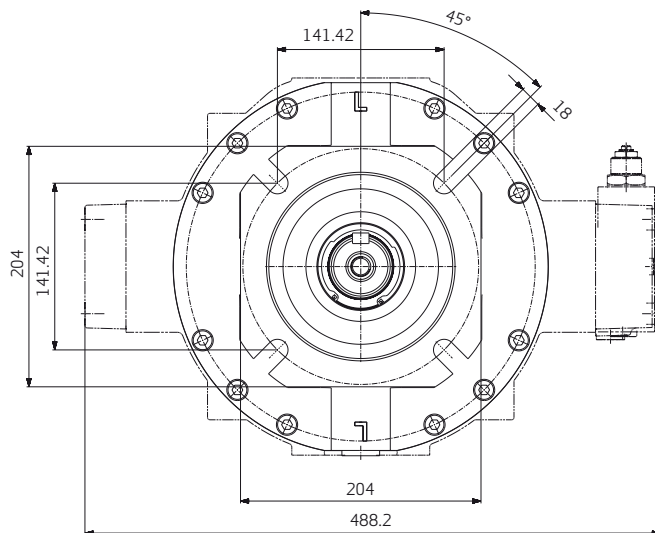
APPENDIX B – TECHNICAL DRAWINGS HOUSING RKP-II 140

RKP 140 WITH FLANGE A7 AND COMPENSATOR R1



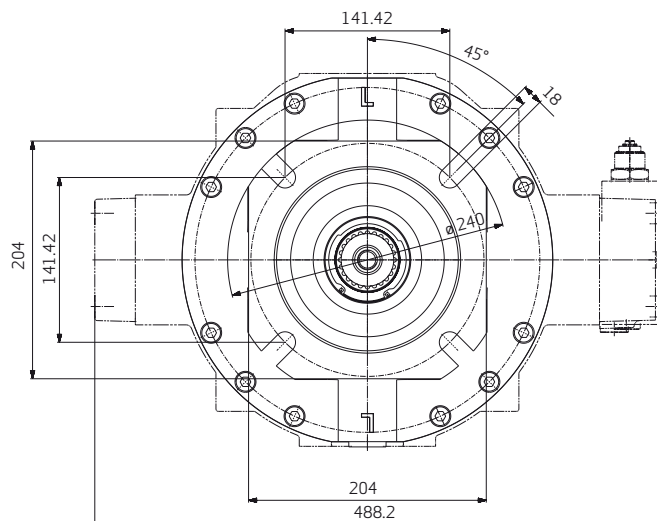
APPENDIX B – TECHNICAL DRAWINGS FLANGES RKP-II 140

Technical drawing of the front view of a pump assembly. The drawing shows a central shaft assembly with a pump head on the right and a flange on the left. Key dimensions include a total width of 312 mm, a pump head width of 320 mm, and a shaft diameter of Ø 160 -0.43 -0.106 mm. The shaft is labeled "Shaft A" and has a length of 155.5 mm. The pump head has a width of 173.5 mm and a height of 92.4 mm. The flange has a width of 86.8 mm and a height of 18 mm. The drawing also shows a mounting bracket with a hole for a screw, labeled "M 26 x 1.5 - 17 deep".



ISO mounting flange to DIN ISO 3019/2 (metric dimensions)

Technical drawing of the front view of a pump assembly. The drawing shows a central shaft (Shaft B) passing through a pump housing. The pump housing has a flange (Flange 7) on the left and a mounting bracket on the right. Dimensions are given in millimeters. Key dimensions include: total width 312 mm, total height 320 mm, shaft diameter $\varnothing 49.6^{+0.16}_0$, and various mounting dimensions like 64.4, 60.7, 54, 9.3, 18, 20, 44.2, 86.8, 173.5, 155.5, and 160. The pump housing is labeled "M 16 - 36 deep" and the mounting bracket is labeled "M 26 x 1.5 - 17 deep". The shaft is labeled "DIN 5480 W 50 x 2 x 24 x 9g".

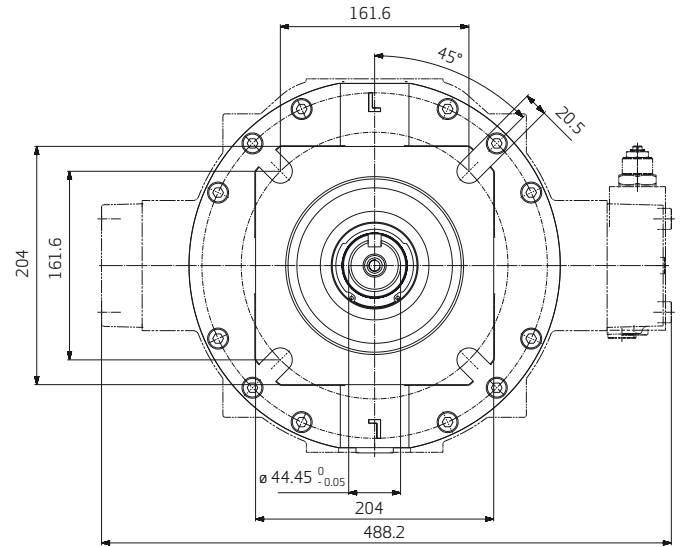
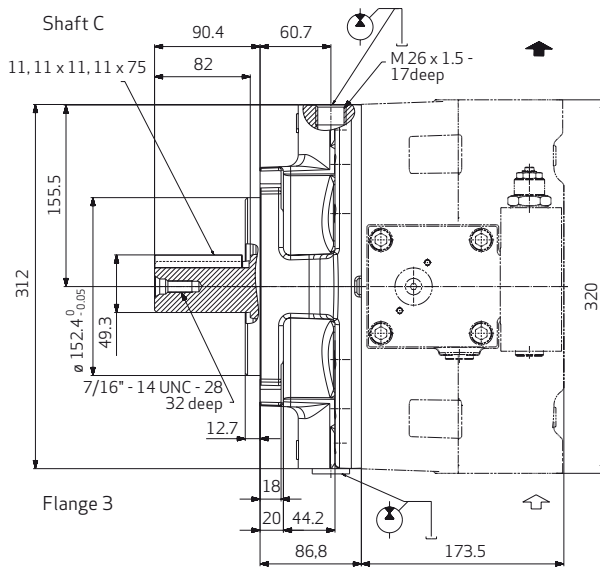


RADIAL PISTON PUMPS RKP-II

RADIAL PISTON PUMPS RKP-II

APPENDIX B – TECHNICAL DRAWINGS DRIVE FLANGES RKP 140

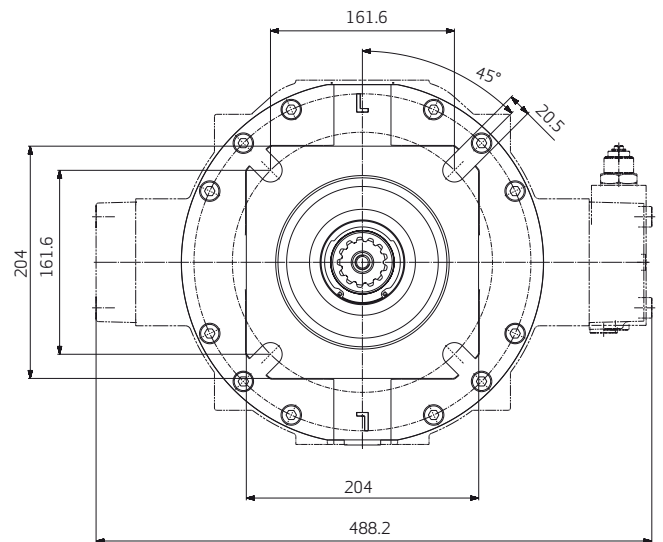
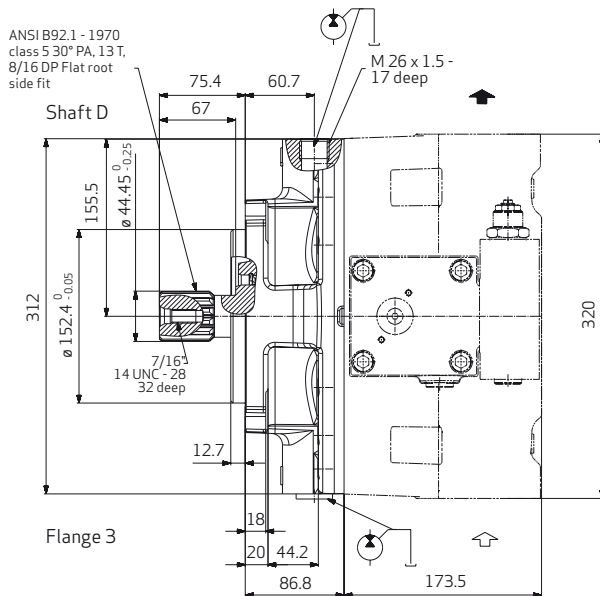
DRIVE FLANGE C3



Key to SAE Standard

SAE mounting flange to DIN ISO 3019/1 (imperial dimensions)

DRIVE FLANGE D3

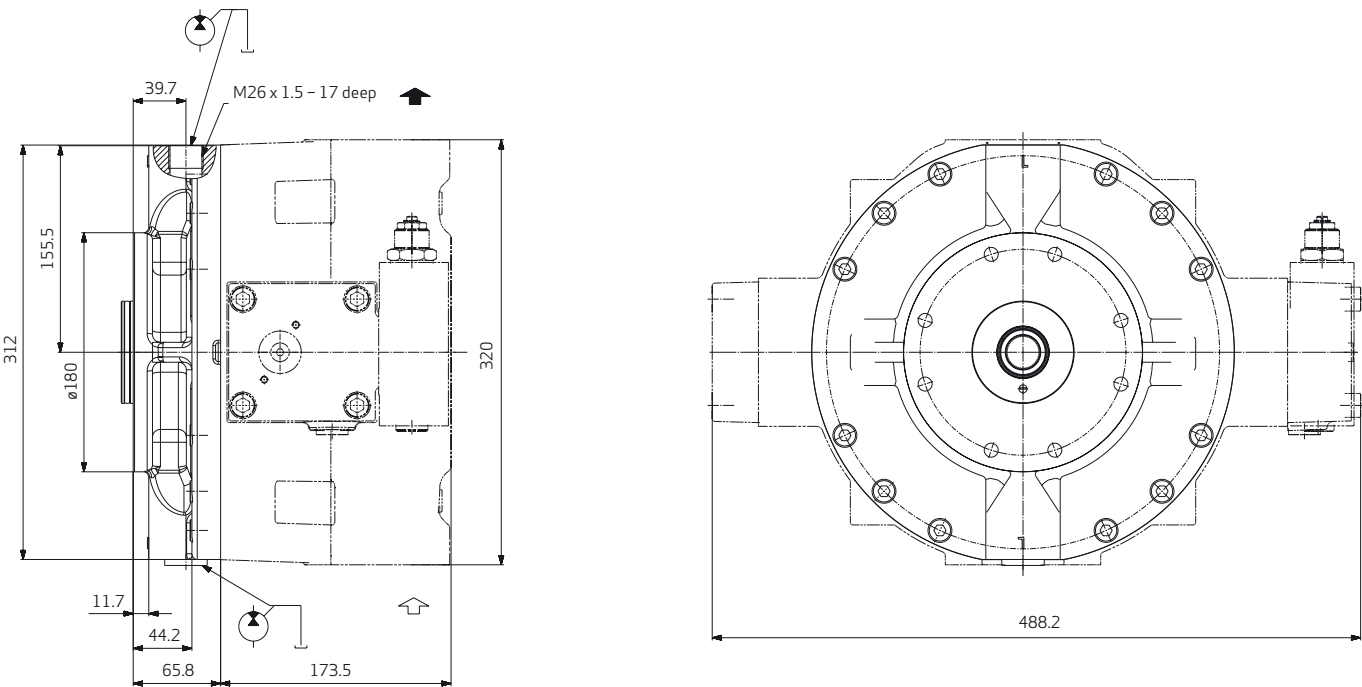


Involute spline to SAE 744 C (for RKP- and SAE-B-mounting obligatory)

SAE mounting flange to ISO 3019/1 (imperial dimensions)

RADIAL PISTON PUMPS RKP-II
APPENDIX B – TECHNICAL DRAWINGS DRIVE FLANGES RKP 140

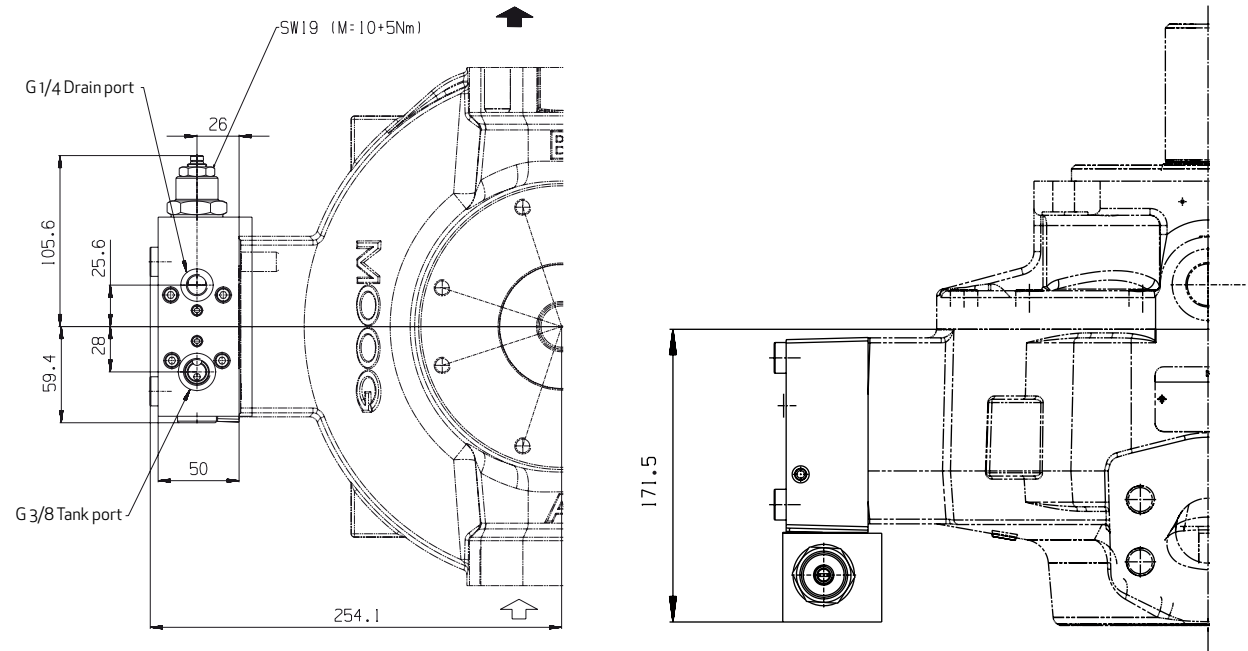
INTERMEDIATE FLANGE RKP 140-140



RADIAL PISTON PUMPS RKP-II

APPENDIX B – TECHNICAL DRAWINGS COMPENSATORS RKP-II 140

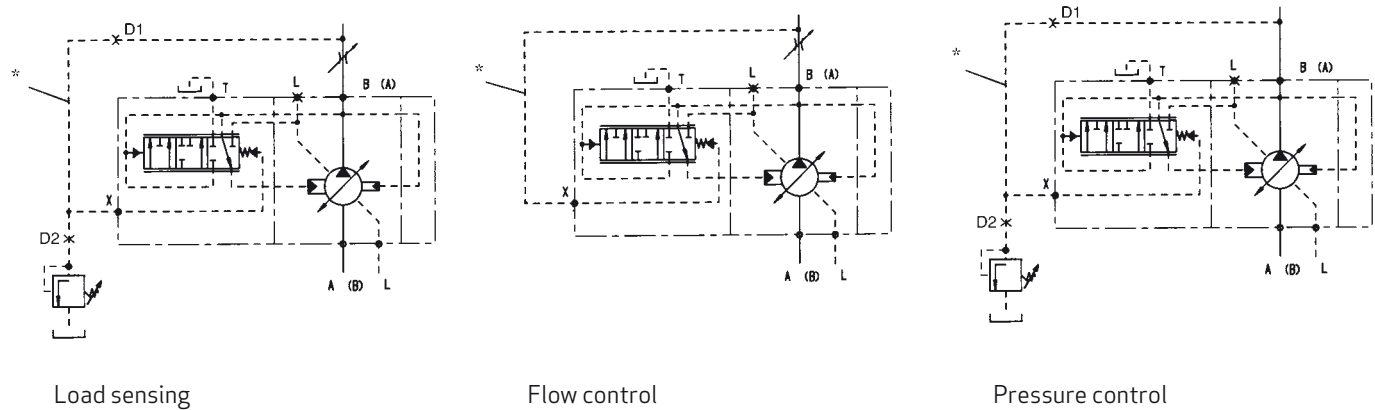
COMBINED PRESSURE AND FLOW COMPENSATOR "LOAD SENSING" WITH P-T CONTROL NOTCH R1



Caution!

The tank line of the compensator must not be combined with the drain line of the pump.

Following circuits are illustrated



* Hose recommendation for control line

		D1 [mm]	D2 [mm]
RKP 140	DN 8	0.8	1.1
I = 800 mm			

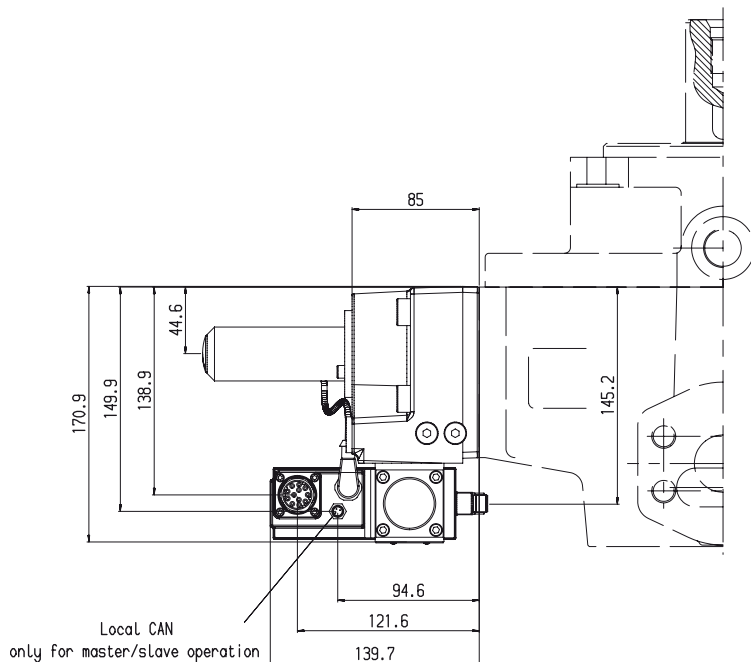
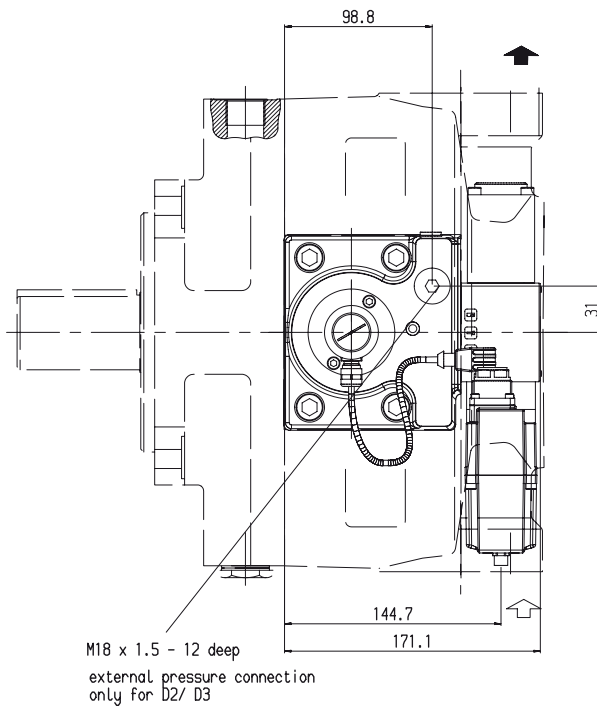
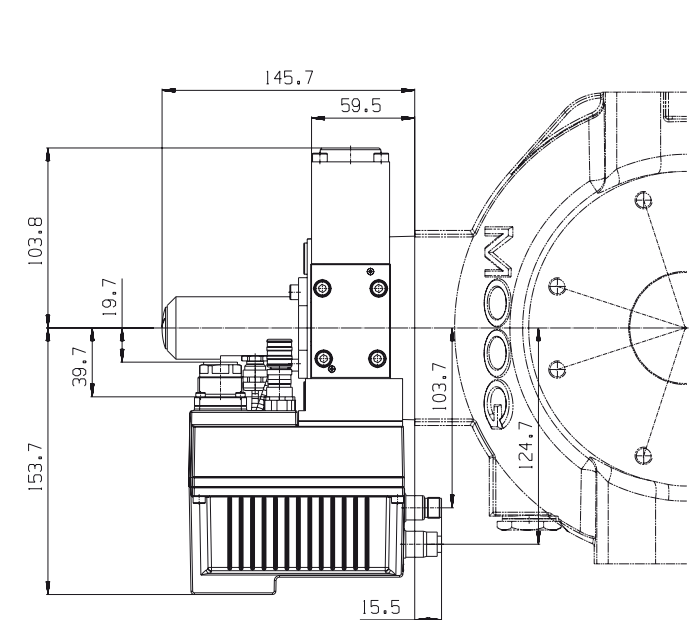
Notes on multiple pump circuits

In the case of multiple pumps, which deliver into one circuit, the P-T control notch may only be activated for the compensator of the first pump by connecting the T-connection to the tank. The T-connection of the compensators of add-on pumps must be plugged.

RADIAL PISTON PUMPS RKP-II

APPENDIX B – TECHNICAL DRAWINGS COMPENSATORS RKP-II 140

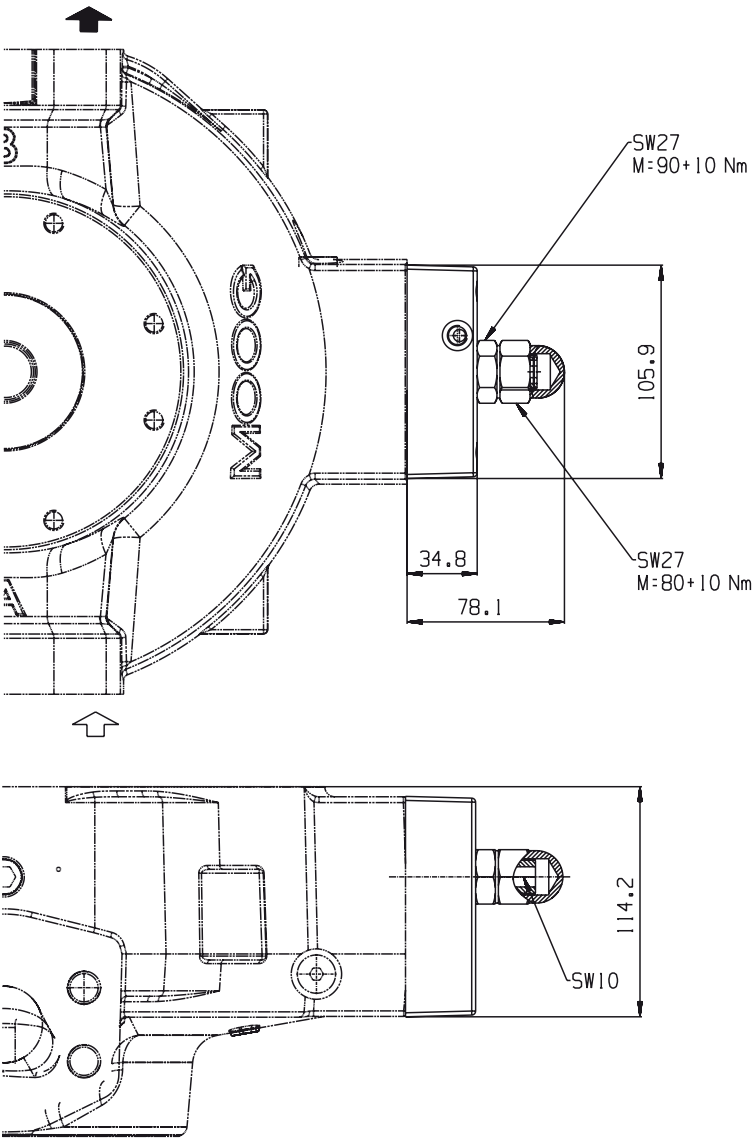
ELECTRO-HYDRAULIC CONTROL WITH DIGITAL ON-BOARD ELECTRONICS D



RADIAL PISTON PUMPS RKP-II

APPENDIX B – TECHNICAL DRAWINGS COMPENSATORS RKP-II 140

MAXIMUM FLOW LIMITER Y

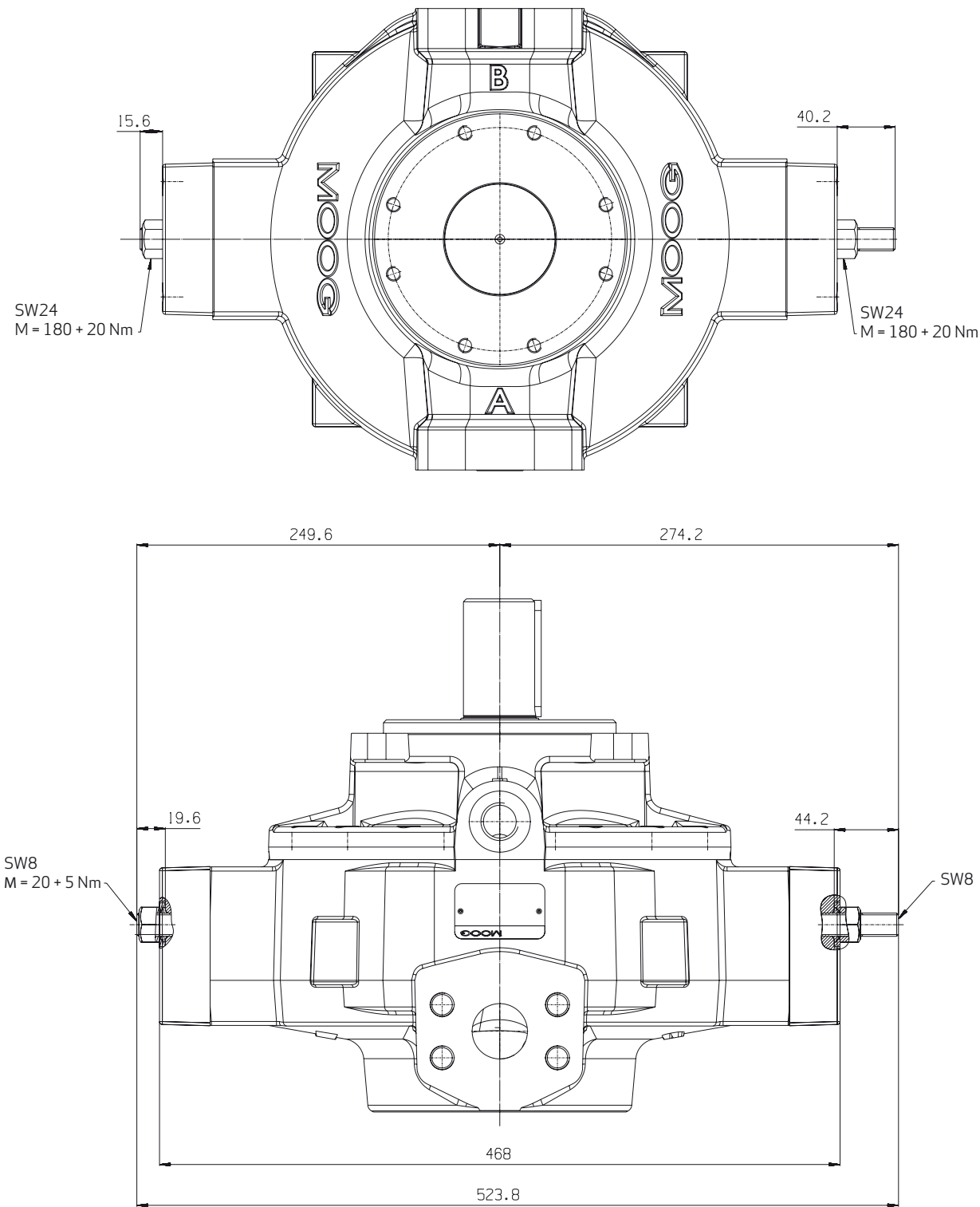


V [cm ³ /rev]	140
ΔV for 1 mm travel of adjusting screw (pitch 1.5 mm/rev)	11.5

RADIAL PISTON PUMPS RKP-II

APPENDIX B – TECHNICAL DRAWINGS COMPENSATORS RKP-II 140

MECHANICAL STROKE ADJUSTMENT B



V [cm³/rev]	140
ΔV for 1 mm travel of adjusting screw (pitch 1.5 mm/rev)	11.5

RADIAL PISTON PUMPS RKP-II

WORLDWIDE SUPPORT

As a recognized leader in motion drive technology, Moog offers a full range of services to support our products and ensure that they meet the expectations of customers. Moog experts are the best at helping customers select the right products and ensuring that they run reliably for a long time. When it is time for new machine commissioning, refurbishment or routine maintenance, our engineers can help to optimize machine performance, minimize downtime and ensure the smooth application of our products.

Moog Authentic Repair™ is designed to provide the highest quality repair services using original equipment parts, the latest design specifications, and highly trained technicians. This ensures that our repaired products will run as well as when they were new.

With facilities in over 26 countries, Moog is committed to offering convenient local service to our customers.

Visit www.moog.com/industrial/worldwide to find the location nearest you for application engineering, repair, or field services.



TAKE A CLOSER LOOK.

Moog solutions are only a click away. Visit our worldwide Web site for more information and the Moog facility nearest you.

Argentina
+54 11 4326 5916
info.argentina@moog.com

Ireland
+353 21 451 9000
info.ireland@moog.com

Spain
+34 902 133 240
info.spain@moog.com

Australia
+61 3 9561 6044
info.australia@moog.com

Italy
+39 0 332 421 111
info.italy@moog.com

Sweden
+46 31 680 060
info.sweden@moog.com

Austria
+43 664 144 6580
info.austria@moog.com

Japan
+81 46 355 3767
info.japan@moog.com

Switzerland
+41 71 394 5010
info.switzerland@moog.com

Brazil
+55 11 3572 0400
info.brazil@moog.com

Korea
+82 31 764 6711
info.korea@moog.com

United Kingdom
+44 168 429 6600
info.uk@moog.com

China
+86 21 2893 1600
info.china@moog.com

Luxembourg
+352 40 46 401
info.luxembourg@moog.com

USA
+1 1 716 652 2000
info.usa@moog.com

Finland
+358 9 2517 2730
info.finland@moog.com

Netherlands
+31 252 462 000
info.netherlands@moog.com

France
+33 1 4560 7000
info.france@moog.com

Norway
+47 6494 1948
info.norway@moog.com

Germany
+49 7031 622 0
info.germany@moog.com

Russia
+7 831 713 1811
info.russia@moog.com

Hong Kong
+852 2 635 3200
info.hongkong@moog.com

Singapore
+65 677 36238
info.singapore@moog.com

India
+91 80 4120 8785
info.india@moog.com

South Africa
+27 12 653 6768
info.southafrica@moog.com

www.moog.com/industrial

Moog is a registered trademark of Moog, Inc. All trademarks as indicated herein are the property of Moog Inc. and its subsidiaries. All rights reserved.
©2009 Moog Inc.

RKP-II Radial Piston Pump
GUT/200 05/2009