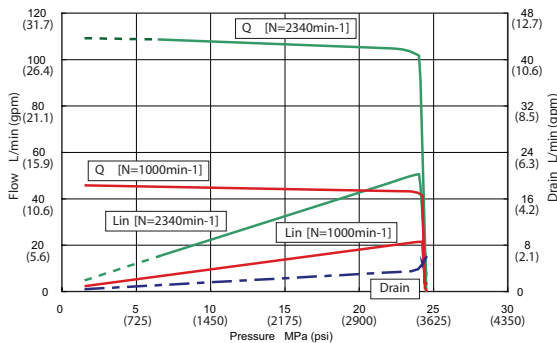


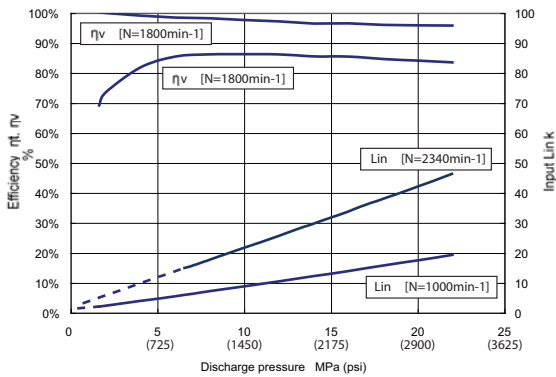
## PVS-2B for Mobile Applications

Variable Displacement Piston Pump

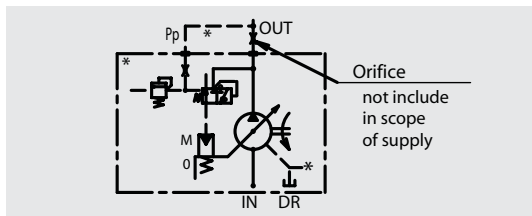
### Pressure-Flow Volume Characteristics



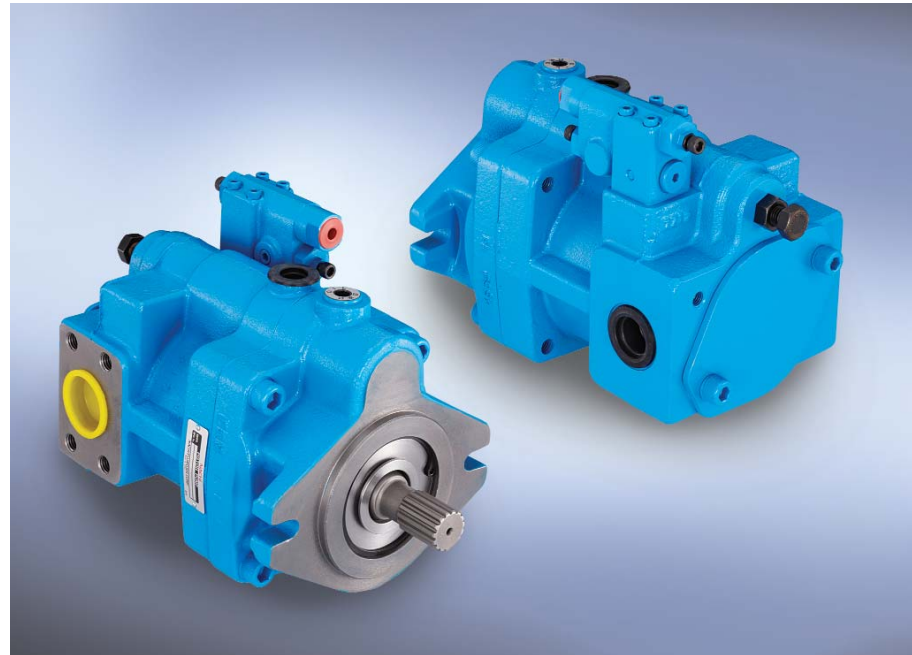
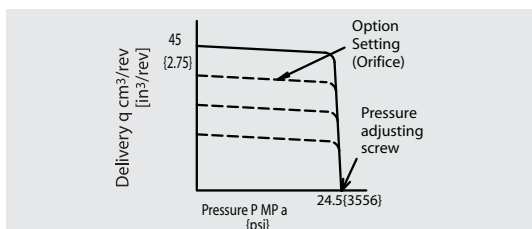
### General Performance



### JIS Symbol



### Pressure-Flow



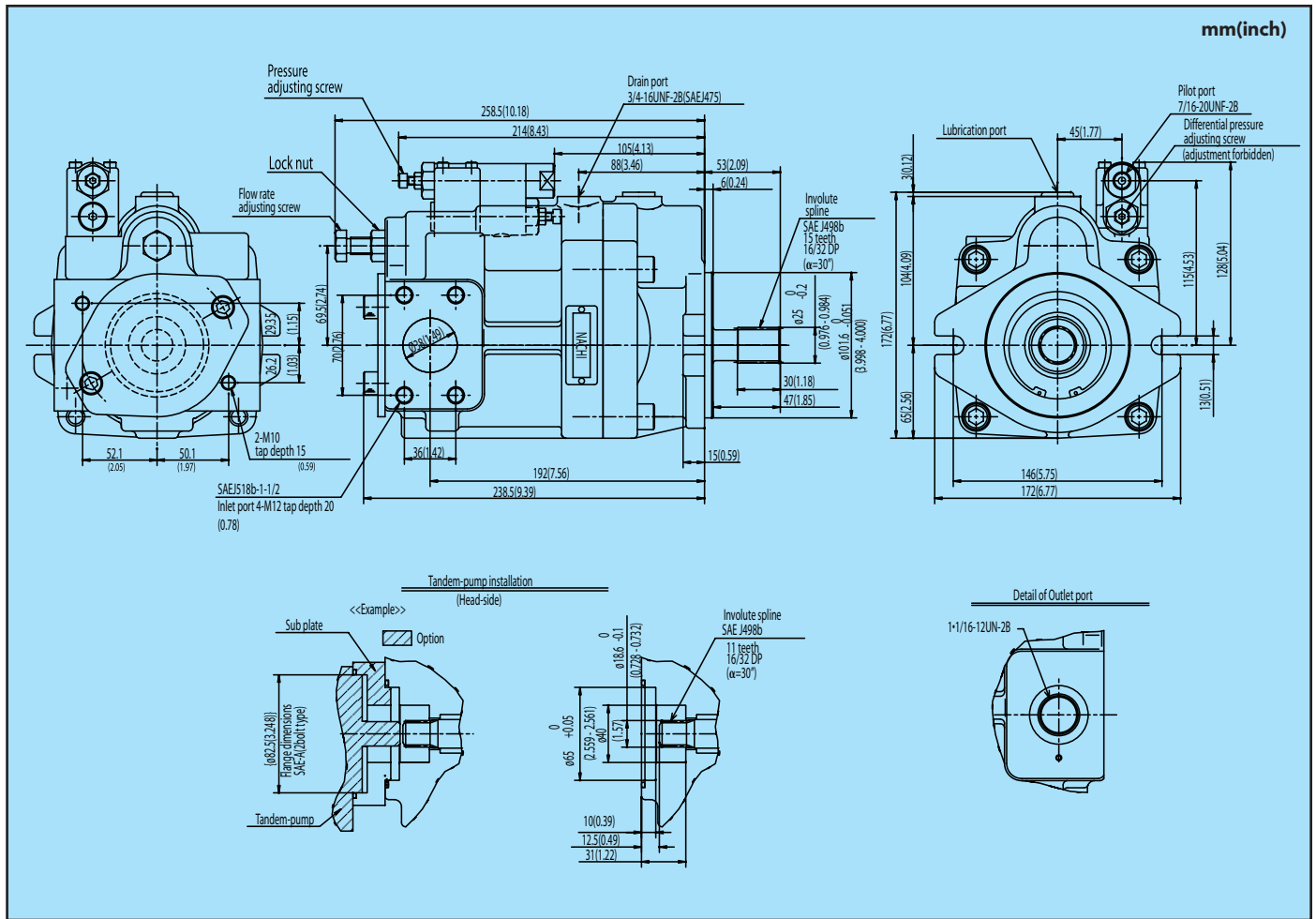
### Features

- Low Noise and Low Pulsation Due to Use of 11 Pistons
- Load Sensing Control Type
- Flange Type Inlet Port (SEA J518b-1-1/2), Thread Type Outlet Port (1-1/16-12UN-2B)
- Tandem Pump Installation Is Possible (SAE A 2 Bolts Flange Mounting)
- Counter-Clockwise Direction of Rotation
- SAE B 2 Bolts Flange Mounting
- Shaft Dimension is 30° Involute Spline with 15T and 16/32 Dp

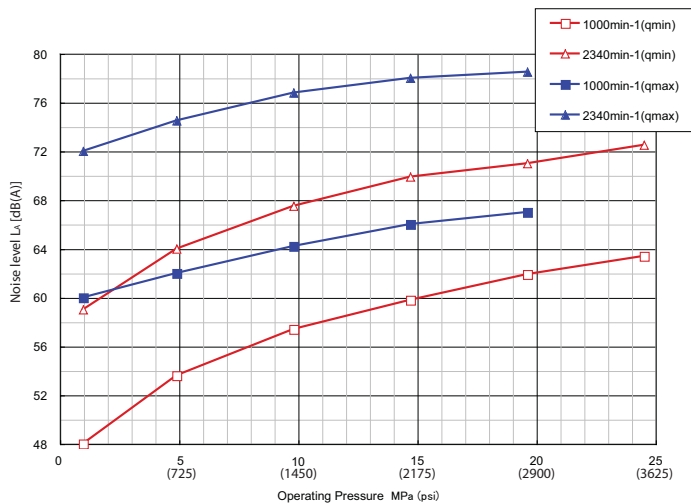
### Specifications

Model	Max. Volume cm <sup>3</sup> /rev (in <sup>3</sup> /rev)	Pressure adjustment MPa (psi)	Permitted peak pressure MPa (psi)	Rotating speed min <sup>-1</sup>	Mass kg(lbs)
PVS-2B-45R3-L-E5127Z	45 (2.75)	2 (290) - 24.5 (3556)	29.4 (4267)	500 - 2340	25 (55.1)

# Dimensional Drawings



# Noise Characteristics



The noise characteristics depend on the installation floor base conditions and the presence of the surrounding substance reflecting the sound, and may therefore be different from the above description in some cases.

## Measurement Conditions

- Noise characteristics
  - Operating oil: ISO VG 46
  - Oil temperature: 50°C (122°F)
  - Place: anechoic chamber
  - Microphone: 1m (3.3feet) from pump
- Other characteristics
  - Operating oil: ISO VG 46
  - Oil temperature: 70°C (158°F)



**NACHI AMERICA INC.**  
 17500 23 Mile Road, Macomb, MI 48044  
 Tel. (800)622-4410 Fax. (586)226-5289  
 Email: hydraulics@nachiamerica.com  
[www.nachihydraulics.com](http://www.nachihydraulics.com)