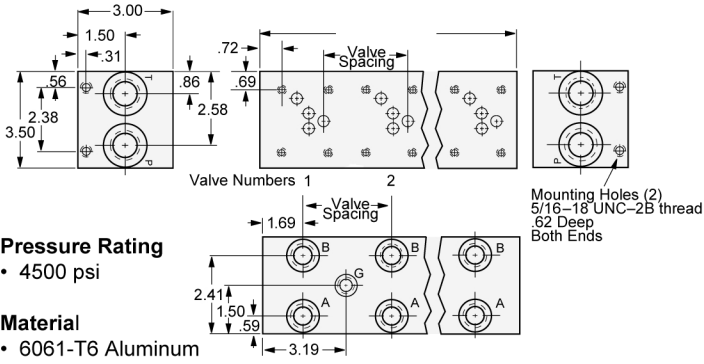


D05 (OLD D02) Manifolds

Parallel

3.25 Spacing

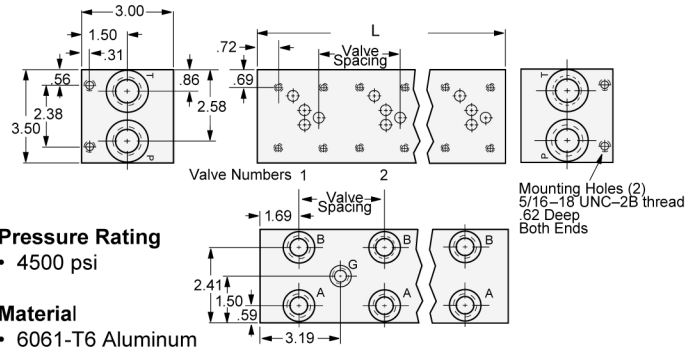


Pressure Rating
• 4500 psi

Material
• 6061-T6 Aluminum

Parallel

5.00 Spacing

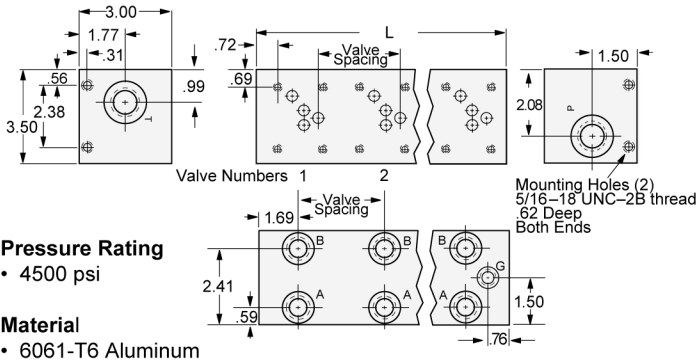


Pressure Rating
• 4500 psi

Material
• 6061-T6 Aluminum

Series

3.25 Spacing

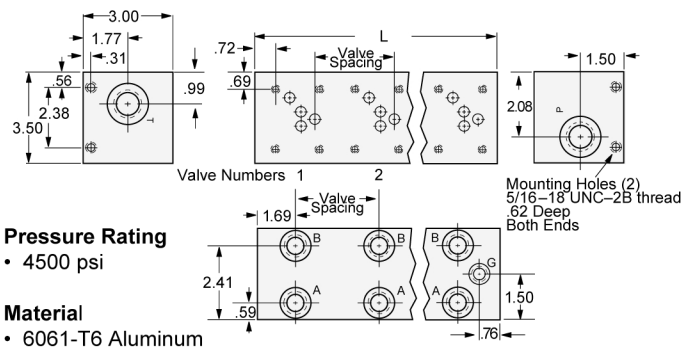


Pressure Rating
• 4500 psi

Material
• 6061-T6 Aluminum

Series

5.00 Spacing



Pressure Rating
• 4500 psi

Material
• 6061-T6 Aluminum

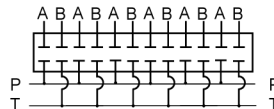
TYPE	NO. OF VALVES	PART NUMBER	"L" INCHES	APPROX WT LBS.
Parallel	2	SFP10012	6.50	6.0
	3	SFP10013	9.75	9.0
	4	SFP10014	13.00	12.0
	5	SFP10015	16.25	15.0
	6	SFP10016	19.50	18.0
	7	SFP10017	22.75	21.0
	8	SFP10018	26.00	24.0
	Series	2	SFP10057	6.50
3		SFP10058	9.75	9.0
4		SFP10059	13.00	12.0

TYPE	NO. OF VALVES	PART NUMBER	"L" INCHES	APPROX WT LBS.
Parallel	2	SFP10022	8.25	7.5
	3	SFP10023	13.25	12.3
	4	SFP10024	18.25	16.9
	5	SFP10025	23.25	21.5
	6	SFP10026	28.25	26.2
	7	SFP10027	33.25	30.8
	8	SFP10028	38.25	35.5
	Series	2	SFP10062	8.25
3		SFP10063	13.25	12.3
4		SFP10064	18.25	16.9

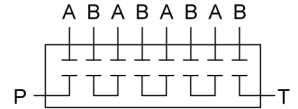
Ports

- P & T - 1 1/16-12 O-ring port (SAE -12)
- A & B - 3/4-16 O-ring port (SAE -8)
- G Gauge with plug - 7/16-20 O-ring port (SAE -4)

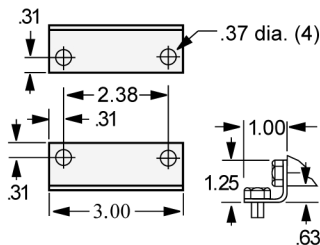
Parallel



Series



Optional Mounting Bracket Kit: Part Number SFP10082



Optional load sense checks are available on A and B ports; please consult factory. To add optional relief cavity, add "R" after part number and specify cavity (generic 10-2 or Sun T-10A cavities available). Example: 10004R R=10-2.