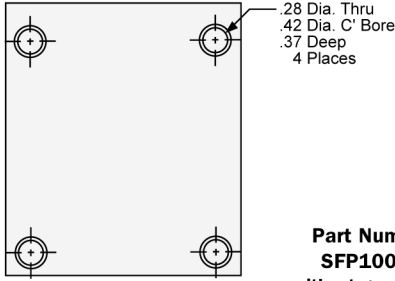
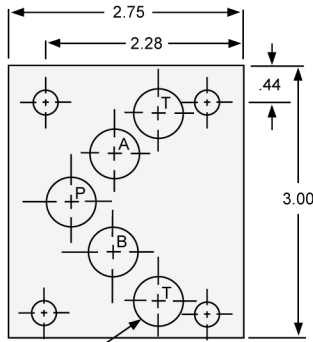


# D05 (Old D02) Cover Plate



**Pressure Rating:** 4500 psi

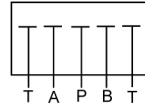
**Material:** 6061-T6 Aluminum

**Items Furnished with Cover Plate**

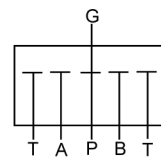
- Four (4) 1/4-20 X 3/4 long socket head cap screws (90009)
- Five (5) Viton O-rings (90003) AS 568A-014

Spotfaced for 1/2 I.D. by 1/16 cross section O-ring. 5 Places

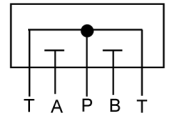
**Part Number SFP10080**  
without gauge port



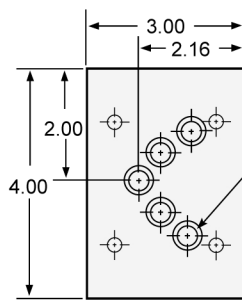
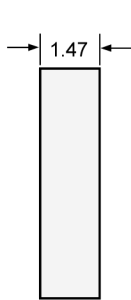
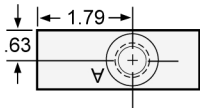
**Part Number SFP10130**  
with gauge port



**Part Number SFP10131**



# D05 (Old D02) Tapping Plate



**Port Size:** 3/4-16 O-ring ports (2) (SAE -8)

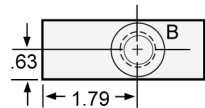
**Pressure Rating:** 4500 psi

**Material:** 6061-T6 Aluminum

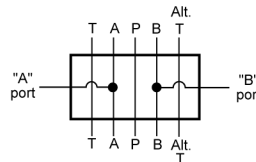
Five (5) Viton O-rings (90003) are furnished with each tapping plate - AS 568A-014

.28 Dia. Thru (4)

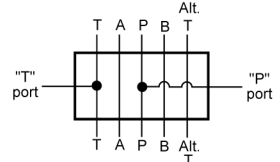
Spotfaced for 1/2 I.D by 1/16 cross section O-ring. 5 Places



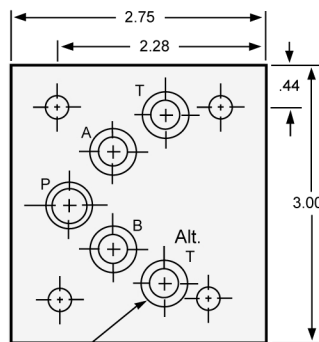
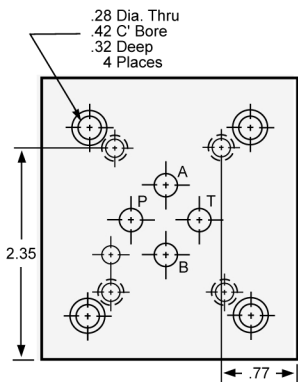
**A & B Ports**  
Part No. SFP10136



**P & T Ports**  
Part No. SFP10137



# D03 (Old D01) Valve Adaptor



Spotfaced for 1/2 I.D. by 1/16 cross section O-ring. 5 Places

# D05 (Old D02) Manifold

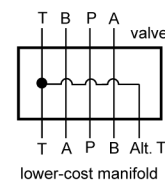
**Pressure Rating:** 4500 psi

**Material:** 6061-T6 Aluminum

**Items Furnished with Adaptor:**

- Four (4) 1/4-20 X 1-1/2 inch long socket head cap screws (90022)
- Five (5) Viton O-rings for the manifold surface (90003) AS 568A-014

**Part No. SFP10140**  
"A" = 0.98"



**Part No. SFP10141**  
"A" = 1.45"

